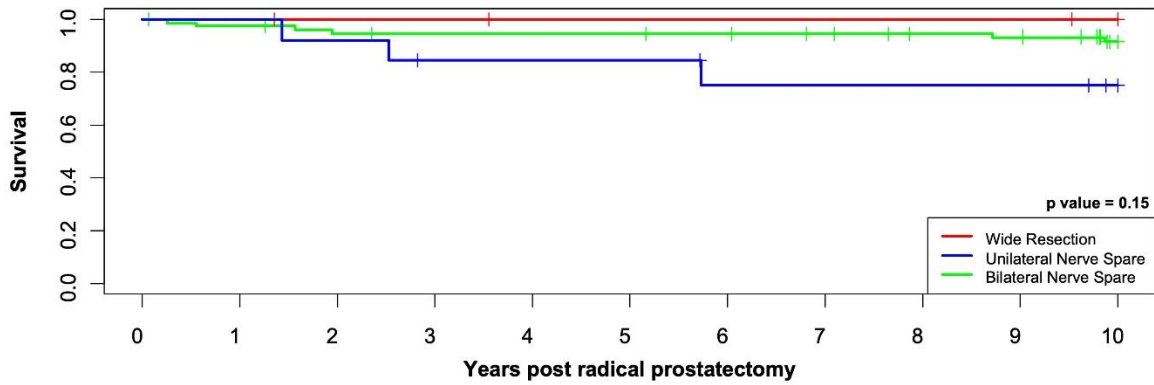


Nayak et al. Long-term function and oncologic outcomes following nerve-spare or wide resection during radical prostatectomy

Supplementary Figure 1. Biochemical recurrence-free survival after radical prostatectomy, stratified by pathologic tumour stage: (A) pathologic stage T2; (B) pathologic stage T3.

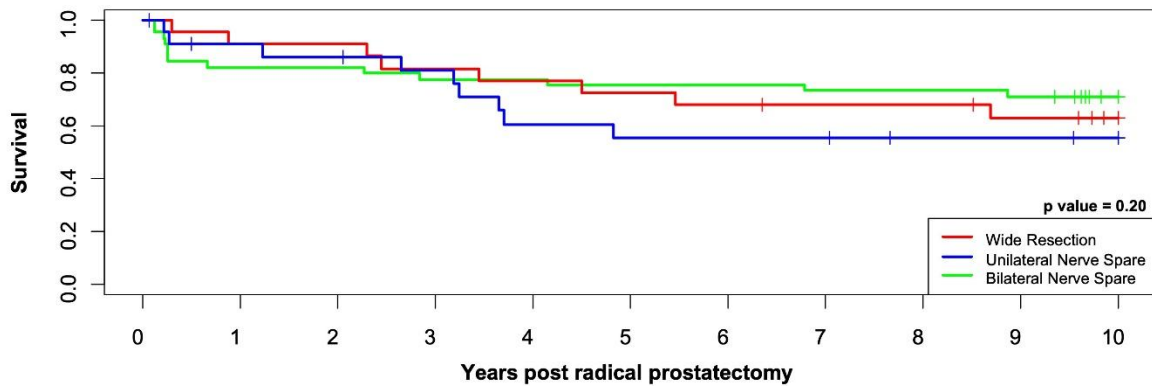
A) Pathologic stage T2



Number at risk

	0	1	2	3	4	5	6	7	8	9	10
Full Nerve Resection	12	12	11	11	10	10	10	10	10	10	9
Unilateral Nerve Spare	13	13	12	10	10	10	8	8	8	8	6
Bilateral Nerve Spare	78	75	72	71	71	71	70	68	65	64	55

B) Pathologic stage T3



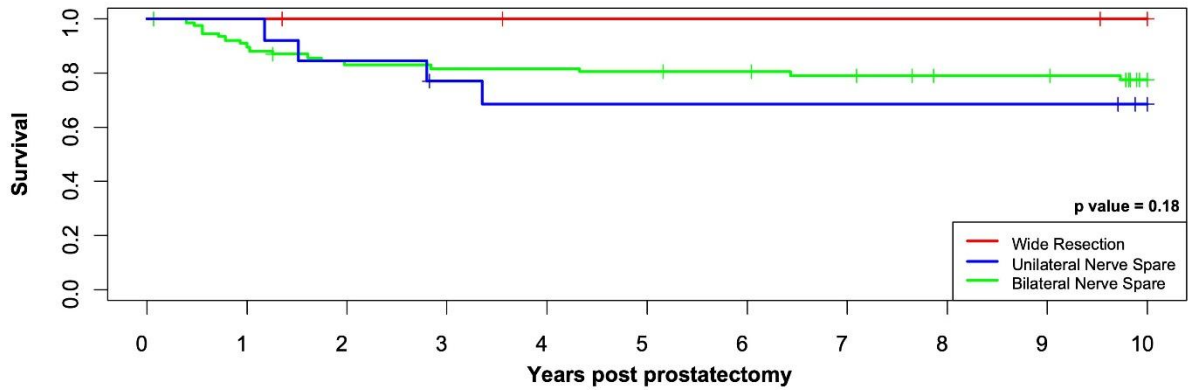
Number at risk

	0	1	2	3	4	5	6	7	8	9	10
Full Nerve Resection	22	20	20	18	17	16	15	14	14	12	9
Unilateral Nerve Spare	23	19	18	16	12	11	11	11	9	9	8
Bilateral Nerve Spare	45	37	37	35	35	34	34	33	33	32	26

Nayak et al. Long-term function and oncologic outcomes following nerve-spare or wide resection during radical prostatectomy

Supplemental Figure 2. Radiation-free survival after radical prostatectomy, stratified by pathologic tumour stage: (A) pathologic stage T2; (B) pathologic stage T3.

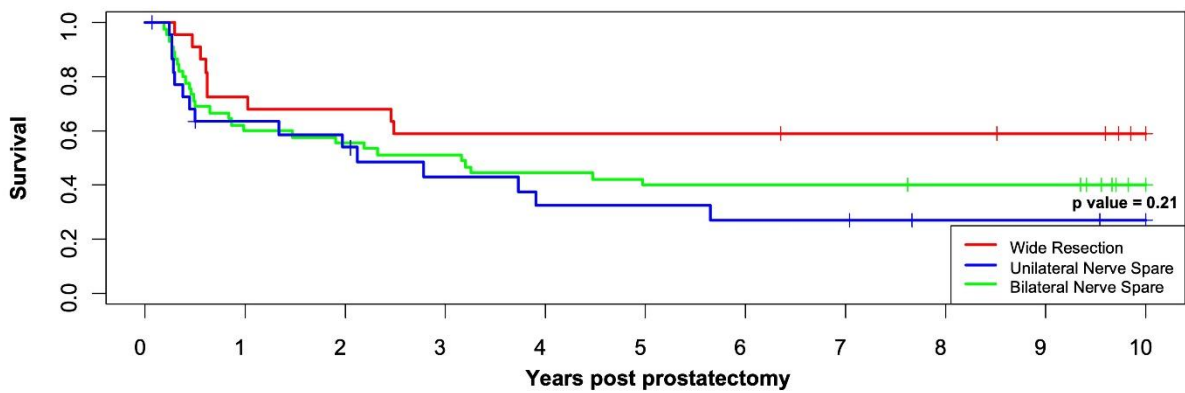
A) Pathologic stage T2



Number at risk

Full Nerve Resection	12	12	11	11	10	10	10	10	10	10	9
Unilateral Nerve Spare	13	13	11	9	8	8	8	8	8	8	6
Bilateral Nerve Spare	78	69	63	62	62	61	60	58	55	55	47

B) Pathologic stage T3



Number at risk

Full Nerve Resection	22	16	15	13	13	13	13	12	12	11	8
Unilateral Nerve Spare	23	13	11	8	6	6	5	5	3	3	2
Bilateral Nerve Spare	45	27	25	23	20	18	18	18	17	17	11

Nayak et al. Long-term function and oncologic outcomes following nerve-spare or wide resection during radical prostatectomy

Supplementary Table 1. Patient demographics and baseline disease characteristics stratified by wide resection or any nerve-sparing prostatectomy			
	Wide resection	Any nerve spare	p
Total, n (%)	34 (17.6)	159 (82.4)	
Age, mean ± SD (yrs)	66.8±5.1	61.0±6.2	<0.0001
Preoperative PSA (µg/L)	11.5±10.8	8.3±6.1	0.10
Preoperative erectile function, n (%)			<0.0001
EPIC=0 (none at all)	12 (35.2)	6 (3.8)	
EPIC=2 (firm enough for masturbation only)	11 (32.4)	18 (11.3)	
EPIC=3 (firm enough for intercourse)	11 (32.4)	135 (4.9)	
Biopsy grade group, n (%)			0.0003
1	2 (5.9)	43 (27.0)	
2	13 (38.2)	70 (44.0)	
3	5 (14.7)	26 (16.4)	
4	6 (17.7)	13 (8.2)	
5	8 (23.5)	7 (4.4)	
Clinical T-stage, n (%)			0.08
T1c	10 (29.4)	64 (40.3)	
T2	16 (47.1)	79 (49.7)	
T3	8 (23.5)	16 (10.0)	
Pathologic T-stage, n (%)			0.05
pT2	12 (35.3)	91 (57.2)	
pT3a	17 (50.0)	56 (35.2)	
pT3b	5 (14.7)	12 (7.6)	
Pathologic N-stage, n (%)	5 (14.7)	4 (2.5)	0.01
RP grade group, n (%)			0.002
1	1 (2.9)	12 (7.5)	
2	17 (50)	87 (54.7)	
3	6 (17.7)	50 (31.5)	
4	1 (2.9)	3 (1.9)	
5	9 (26.5)	7 (4.4)	
Cancer volume, mean ± SD (cc)	8.2±9.8	5.2±5.1	0.10
Prostate volume, mean ± SD (cc)	50.0±21.6	39.3±21.7	0.01
Surgical margin, n (%)			0.09
Negative	29 (85.3)	113 (71.1)	
Positive	5 (14.7)	46 (28.9)	
RP modality, n (%)			0.05

Nayak et al. Long-term function and oncologic outcomes following nerve-spare or wide resection during radical prostatectomy

Open	11 (32.4)	28 (17.6)	
Robotic	23 (67.6)	131 (82.4)	

NS: nerve spare; PSA: prostate-specific antigen; RP: radical prostatectomy; SD: standard deviation.