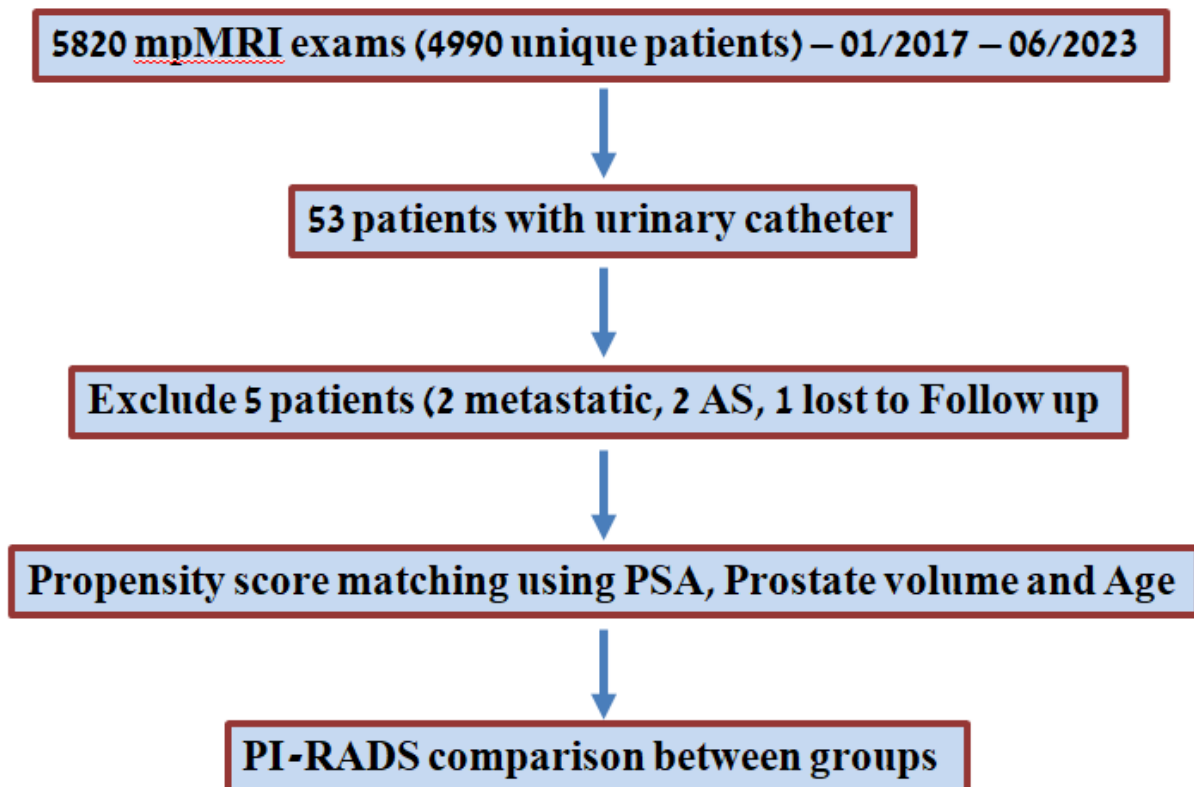
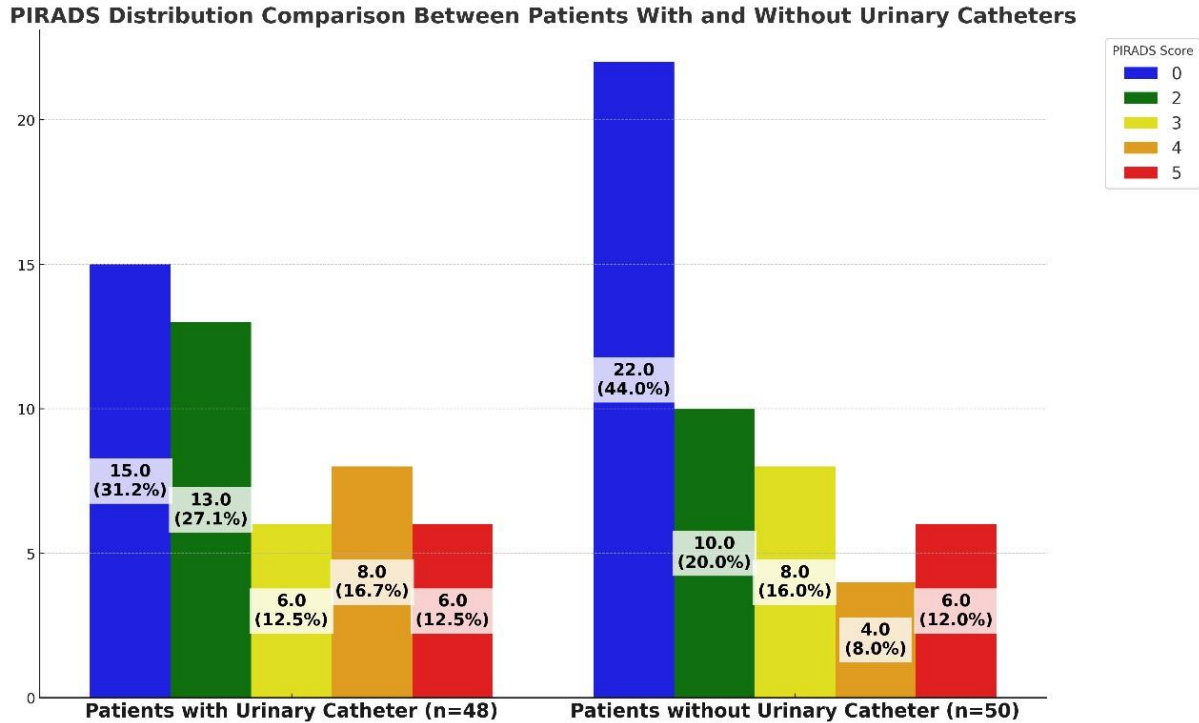


APPENDIX

Supplementary Figure 1. Study methodology. Flowchart outlines the step-by-step methodology employed in the study.



Supplementary Figure 2. Patients with urinary catheters (n=48) and those without urinary catheters (n=50) are subdivided based on their MRI exam Prostate Imaging-Reporting & Data System (PI-RADS) scores – 0/1, 2, 3, 4, 5.



Supplementary Table 1. Multivariable logistic regression evaluating baseline predictors of CSPC (clinically significant prostate cancer) in patients carrying urinary catheter and undergoing prostate MRI			
Variable	Odds ratio	95% confidence interval	p
Age (years)	0.994	0.835–1.183	0.949
PSA (ng/ml)	1.153	1.03–1.291	0.013
Prostate volume (ml)	0.989	0.965–1.013	0.649