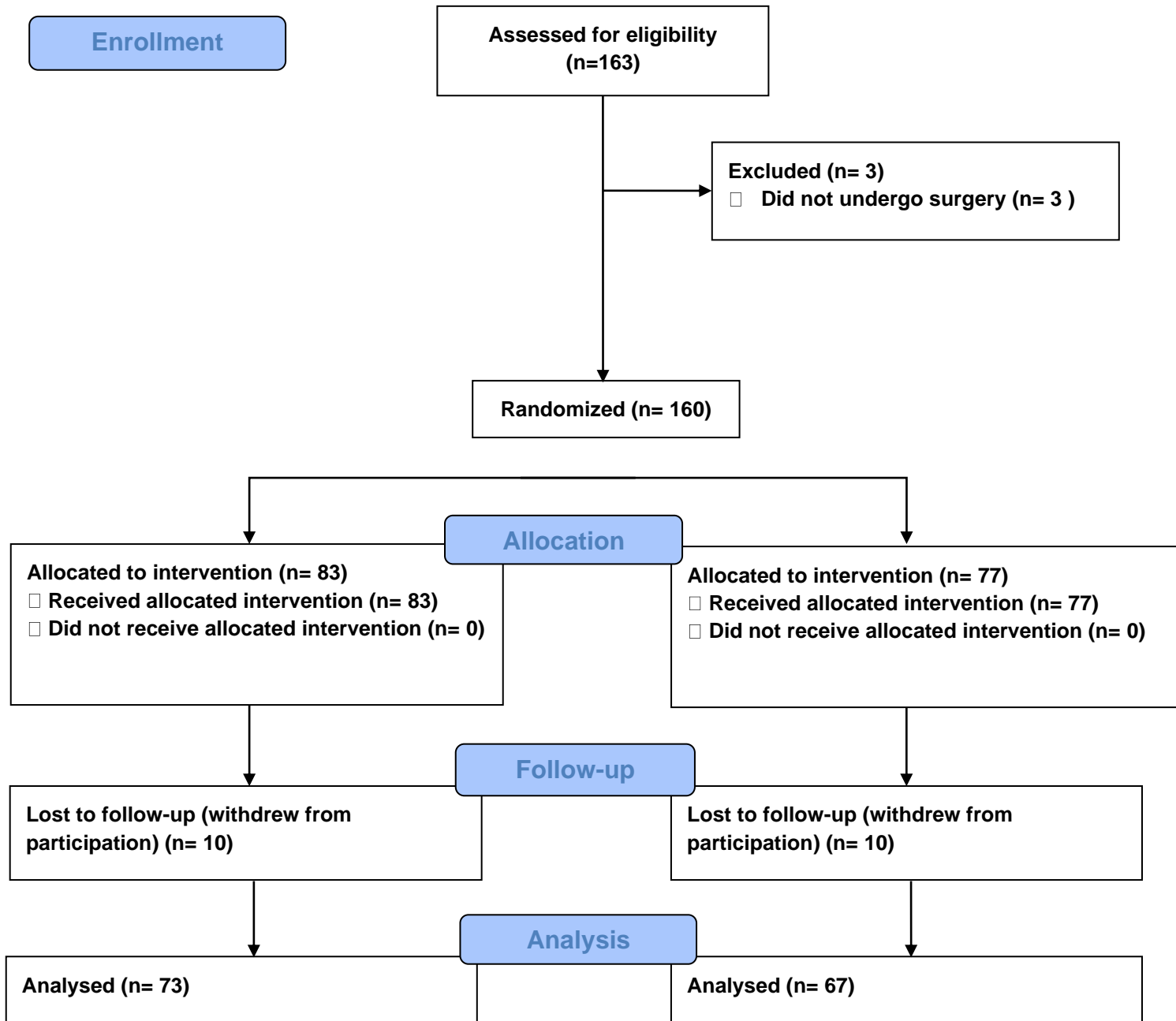


APPENDIX

Supplementary Figure 1.



Millan et al. Long-term impact of posterior reconstruction urethrovesical anastomosis during robot-assisted prostatectomy: A secondary analysis of a randomized cohort

Supplementary Table 1. Comparison of continence (0 pads per day) data between PR-UVA and C-UVA at various time points						
Time	Used 0 pad per day, n (%)		p	Median score (minimum, maximum)		p
	PR-UVA (73)	C-UVA (67)		PR-UVA (73)	C-UVA (67)	
Baseline	70 (96.0)	66 (98.5)	0.2	0 (0 – 2)	0 (0 – 0)	0.1
2 months	9 (12.5)	7 (10.6)	0.8	2 (0 – 3)	2 (0 – 3)	0.4
3 months	20 (28.2)	16 (24.2)	0.7	1 (0 – 3)	1 (0 – 3)	0.7
4 months	25 (35.2)	24 (36.4)	1.0	1 (0 – 3)	1 (0 – 3)	1.0
6 months	34 (51.5)	34 (53.1)	0.8	1 (0 – 3)	1 (0 – 3)	1.0
8 months	41 (57.7)	37 (57.8)	1.0	1 (0 – 3)	1 (0 – 3)	1.0
12 months	46 (64.8)	40 (63.5)	1.0	1 (0 – 3)	1 (0 – 3)	0.6
Baseline vs. 12 months			0.8			

C-UVA: conventional urethrovesical anastomosis; PR-UVA: posterior reconstruction urethrovesical anastomosis.