

# Trends in kidney stone prevalence among U.S. adults

## A concerning contemporary gender analysis from the NHANES database

Kelven W. Chen<sup>1,2</sup>, Malek Meskawi<sup>1</sup>, Larry E. Miller<sup>3</sup>, Samir Bhattacharyya<sup>4</sup>, Thomas Taily<sup>5</sup>, Ben H. Chew<sup>6</sup>, Naeem Bhojani<sup>1</sup>

<sup>1</sup>Division of Urology, Centre Hospitalier de l'Université de Montréal, Montreal, QC, Canada; <sup>2</sup>Department of Urology, National University Hospital, Singapore; <sup>3</sup>Department of Biostatistics, Miller Scientific, Johnson City, TN, United States; <sup>4</sup>Health Economics and Market Access, Boston Scientific, Marlborough, MA, United States; <sup>5</sup>Department of Urology, Ghent University Hospital, Ghent, Belgium; <sup>6</sup>Department of Urologic Sciences, University of British Columbia, Vancouver, BC, Canada

Cite as: Chen KW, Meskawi M, Miller LE, et al. Trends in kidney stone prevalence among U.S. adults: A concerning contemporary gender analysis from the NHANES database. *Can Urol Assoc J* 2025;19(2):58-60. <http://dx.doi.org/10.5489/cuaj.8935>

Published online October 7, 2024

See related commentary on page 61

### INTRODUCTION

The global prevalence of kidney stones is increasing, posing a substantial economic burden estimated at \$4.5 billion annually in the U.S. in 2000.<sup>1</sup> Factors such as age, gender, race, environmental exposures, lifestyle choices, and dietary habits contribute to stone formation. Additionally, conditions like diabetes, obesity, and hypertension heighten the risk of kidney stones.<sup>2,3</sup>

The National Health and Nutrition Examination Survey (NHANES) provides comprehensive health data on the U.S. population, including kidney stone prevalence and patient characteristics derived from interviews, lab tests, and physical exams. From NHANES II (1976–1980) to recent updates, stone prevalence rose from 3.8% to 8.8%, stabilizing in men but increasing in women.<sup>4</sup> This study aimed to analyze temporal trends in kidney stone prevalence among U.S. adults using NHANES data from 2007–2020.

### METHODS

This cross-sectional observational study evaluated the lifetime prevalence of kidney stones using NHANES data. NHANES is a health survey that provides nationally representative results for the civilian population of the U.S. The study was approved by the Ethics Review Committee of the National Center for Health Statistics.

We analyzed data from six NHANES cycles: 2007–2008, 2009–2010, 2011–2012, 2013–2014, 2015–2016, and 2017–2020, a 10.6-year period represented by the midpoints of the first cycle and last cycle. The lifetime prevalence of kidney stones was determined based on responses to the question, “Have you ever had kidney stones?” We used survey statistical methods to estimate kidney stone prevalence overall and within subgroups defined by sex, age, and race/ethnicity (Asian, Black, Mexican American, White, other Hispanic, or other race/multi-race). Nationally representative prevalence values were calculated and reported as percentages with standard errors (SE).

### RESULTS

The analysis included 38 329 participants aged 20 and older. Population-weighted demographic data included a mean age of 37.4 years (SE 0.2) and 51.1% female (SE 0.2%). The racial distribution was 62.6% White (SE 1.5%), 12.1% Black (SE 0.8%), 10.3% Mexican American (SE 0.8%), 8.4% other/multi-race (SE 0.4%), and 6.6% other Hispanic (SE 0.5%). The weighted prevalence of kidney stones remained stable from 8.9% (SE 0.6%) in 2007–2008 to 9.9% (SE 0.6%) in 2017–2020 ( $p=0.23$ ); however, kidney stone prevalence increased significantly in females during this period, from 6.5% (SE 0.5%) to 9.1% (SE 0.9%) ( $p=0.01$ ) (Table 1). The prevalence of kidney stones remained stable during the study period in males, across age groups, and among racial/ethnic groups (Figure 1).

### DISCUSSION

The weighted prevalence of kidney stones among U.S. adults remained relatively stable, from 8.9% in 2007–2008 to 9.9% in 2017–2020, with an upward trend observed specifically in women, increasing from 6.5% to 9.1% over the same period. Historically, stone disease prevalence was higher in males than females, but this gap has narrowed in recent decades, especially among younger women. A similar trend of this narrowing gender gap was also noted in a study of the Canadian population. The study identified a proportionally greater

**Table 1. Trends in kidney stone prevalence in U.S. adults, 2007–2020\***

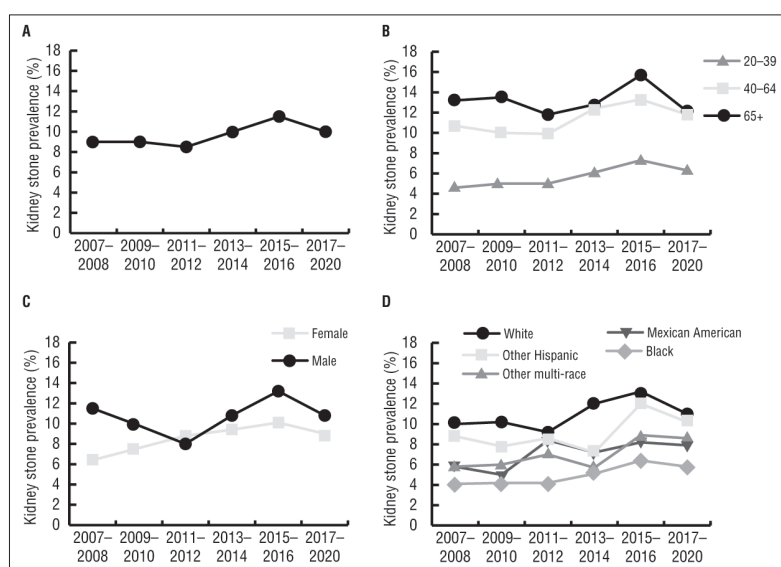
Groups	2007–2008	2009–2010	2011–2012	2013–2014	2015–2016	2017–2020	p
All subjects	8.9 (0.6)	8.8 (0.4)	8.5 (0.6)	10.1 (0.5)	11.5 (0.5)	9.9 (0.6)	0.23
Sex							
Female	6.5 (0.5)	7.7 (0.5)	8.9 (1.0)	9.4 (0.8)	10.1 (0.9)	9.1 (0.9)	0.01
Male	11.5 (0.9)	9.9 (0.8)	8.1 (0.8)	10.9 (0.9)	13.1 (0.6)	10.8 (0.9)	0.59
Age							
20–39	4.7 (0.7)	5.1 (0.7)	5.1 (0.6)	6.1 (0.6)	7.3 (0.8)	6.4 (0.7)	0.12
40–64	10.7 (0.9)	10.0 (0.7)	9.9 (0.8)	12.3 (1.2)	13.2 (1.0)	11.7 (1.1)	0.48
65+	13.3 (1.1)	13.6 (1.2)	11.8 (1.1)	12.8 (1.1)	15.6 (1.1)	12.3 (0.9)	0.47
Race							
Mexican American	5.7 (0.7)	5.1 (1.0)	8.5 (1.2)	7.2 (1.1)	8.1 (0.9)	7.8 (0.8)	0.06
Other Hispanic	8.7 (0.9)	7.8 (0.9)	8.6 (1.6)	7.3 (0.6)	11.9 (1.6)	10.2 (1.4)	0.37
White	10.2 (0.7)	10.3 (0.5)	9.4 (0.9)	12.1 (0.8)	13.3 (0.8)	11.1 (0.8)	0.45
Black	4.3 (0.8)	4.4 (0.6)	4.3 (0.5)	5.2 (0.6)	6.4 (0.5)	5.8 (0.6)	0.14
Other/multirace	5.9 (1.8)	6.0 (1.5)	7.0 (1.0)	5.8 (0.8)	8.9 (1.7)	8.6 (1.0)	0.24

\*Values are percent (standard error).

rise in surgical treatment rates for kidney stones among women compared to men in the same time period.<sup>5</sup>

The rising trend of kidney stones among women is concerning, complex, and multifactorial. One possible explanation is the rising rates of obesity. In the last two decades, the prevalence of obesity in U.S. adults increased from 30.5% to 42.4%.<sup>6</sup> Notably, the prevalence of severe obesity was higher among women. Obesity has been tied to an increase in the concentrations of uric acid and calcium in the urine, contributing to stone formation.<sup>7</sup> An evaluation of NHANES data from 2011–2018 also demonstrated that a higher total fat percentage is associated with a higher prevalence of stone disease.<sup>8</sup> Moreover, obese women might also be at a higher risk of forming stones compared with obese men. A previous study determined that the relative risk of incident stones in obese men is 1.27 vs. that in normal weight men, whereas in obese women the risk was up to 2.09 times higher than in normal weight women.<sup>9</sup>

Metabolic syndrome, which is closely linked to hypertension and diabetes, has been associated with increased risk of kidney stones.<sup>10</sup> Insulin resistance in diabetes is associated with increased intestinal absorption and renal excretion of calcium. Furthermore, diabetic stone formers excrete more oxalate than non-diabetic patients, all of which increases the risk of calcium oxalate stones.<sup>11</sup>



**Figure 1.** Trends in kidney stone prevalence in U.S. adults: A) among all participants; B) by age group; C) by sex; and D) by race/ethnicity. Plotted values are percentage (standard error).

Metabolic syndrome also induces a series of inflammatory responses that precipitate calcification through the expression of monocyte chemoattractant protein 1, osteopontin, and macrophage infiltration.<sup>12</sup> These inflammatory cascades cause an increase in reactive oxygen species (ROS) that is linked to calcification not

only in the kidneys but also in the vascular endothelium that is theorized to cause hypertension.<sup>13</sup> The rising diagnosis of cardiovascular disease among younger women suggests shared physiologic mechanisms that may also explain the increasing prevalence of kidney stones in this demographic.<sup>14</sup>

Our data shows that kidney stone prevalence has remained largely stable for men and women older than 60. The increasing trend of stones in women was largely contributed by those under the age of 60. Another possible hypothesis is the broader societal shift towards greater gender equality in the workforce. According to the U.S. Bureau of Labor Statistics, women's labor force participation has increased over the decades, with women playing increasingly significant roles across various sectors and industries in the U.S. Women were also more likely to pursue higher levels of education, surpassing men in the number of bachelor's and doctoral degrees.<sup>15</sup> The increase in an educated female workforce, facilitated by better work-related health insurance coverage, could mean greater awareness, as well as access to healthcare services. Consequently, this could lead to more frequent checkups, potentially leading to a rise in detection of asymptomatic kidney stones.<sup>16</sup>

### Strengths and limitations

This study's strengths lie in its large, representative sample of the U.S. adult population, allowing for broad generalizability. The extended data analysis period offers a comprehensive view of kidney stone prevalence. Leveraging NHANES data enabled a thorough exploration of medical history, lifestyle, socioeconomic factors, and biochemistry measures related to stones. Machine-learning techniques identified key variables linked to stone prevalence and incidence among statistically significant factors.

Limitations include the cross-sectional design, hindering causal relationship establishment. Additionally, NHANES data's reliance on self-reports introduces potential recall bias. Lastly, important factors, such as dietary habits, body composition, and environmental exposures, as well as stone-specific information like stone composition and 24-hour urinary metabolites, were not fully captured.

### CONCLUSIONS

The overall lifetime prevalence of kidney stones among American adults has remained relatively stable over the past decade; however, there is a notable upward trend in kidney stones among females that demands further

investigation. Possible contributing factors include diet, obesity, and metabolic syndrome, as well as changes in working status, attitude, and access to healthcare.

**COMPETING INTERESTS:** Dr. Miller reports consultancy with Boston Scientific. Dr. Bhattacharyya reports employment with Boston Scientific. Dr. Taily reports consultancy with Boston Scientific. Dr. Chew reports consultancy with Boston Scientific. Dr. Bhojani reports consultancy with Boston Scientific. The remaining authors do not report any competing personal or financial interests related to this work.

**FUNDING:** Boston Scientific supported this research.

This paper has been peer reviewed.

### REFERENCES

1. Pearle MS, Calhoun EA, Curhan GC, et al. Urologic diseases in America project: urolithiasis. *J Urol* 2005;173:848-57. <https://doi.org/10.1097/01.ju.0000152082.14384.d7>
2. Wang K, Ge J, Han W, et al. Risk factors for kidney stone disease recurrence: A comprehensive meta-analysis. *BMC Urol* 2022;22:62. <https://doi.org/10.1186/s12894-022-01017-4>
3. Taylor EN, Stampfer MJ, Curhan GC. Obesity, weight gain, and the risk of kidney stones. *J Am Med Assoc* 2005;293:455-62. <https://doi.org/10.1001/jama.293.4.455>
4. Chen Z, Prosperi M, Bird VY. Prevalence of kidney stones in the USA: The National Health and Nutrition Evaluation Survey. *J Clin Urol* 2019;12:296-302. <https://doi.org/10.1177/2051415818813820>
5. Golomb D, Dave S, Berto FG et al. A population-based, retrospective cohort study analyzing contemporary trends in the surgical management of urinary stone disease in adults. *Can Urol Assoc J* 2022;16:112-8. <https://doi.org/10.5489/cuaj.7474>
6. Hales CM, Carroll MD, Fryar CD et al. Prevalence of obesity and severe obesity among adults: United States, 2017–2018. *NCHS Data Brief* 2020;360:1-8.
7. Wood K, Boyd C, Whitaker D et al. Impact of demographic factors and systemic disease on urinary stone risk parameters amongst stone formers. *Rev Urol* 2019;21:158-65. <https://doi.org/10.1097/01.JU.0000555109.53003.3f>
8. Abufaraj M, Siyam A, Xu T et al. Association between body fat mass and kidney stones in US adults: Analysis of the National Health and Nutrition Examination Survey 2011–2018. *Eur Urol Focus* 2022;8:580-7. <https://doi.org/10.1016/j.euf.2021.03.010>
9. Taylor EN, Stampfer MJ, Curhan GC. Obesity, weight gain, and the risk of kidney stones. *JAMA* 2005;293:455. <https://doi.org/10.1001/jama.293.4.455>
10. Hood VL, Sternberg KM, de Waal D et al. Association of urine findings with metabolic syndrome traits in a population of patients with nephrolithiasis. *Kidney360* 2021;3:317-24. <https://doi.org/10.34067/KID.0002292021>
11. Eisner BH, Parten SP, Bechis SK, et al. Diabetic kidney stone formers excrete more oxalate and have lower urine pH than nondiabetic stone formers. *J Urol* 2010;183: 2244-8. <https://doi.org/10.1016/j.juro.2010.02.007>
12. Kohjimoto Y, Sasaki Y, Iguchi M, et al. Association of metabolic syndrome traits and severity of kidney stones: Results from a Nationwide Survey on urolithiasis in Japan. *Am J Kidney Dis* 2012;61:923-9. <https://doi.org/10.1053/j.ajkd.2012.12.028>
13. Khan SR. Is oxidative stress, a link between nephrolithiasis and obesity, hypertension, diabetes, chronic kidney disease, metabolic syndrome? *Urol Res* 2012;40:95-112. <https://doi.org/10.1007/s00240-011-0448-9>
14. Okunrintemi V, Tibuakuu M, Virani SS, et al. Sex differences in the age of diagnosis for cardiovascular disease and its risk factors among U.S. adults: Trends from 2008–2017, the Medical Expenditure Panel Survey. *J Am Heart Assoc* 2020;9:e018764. <https://doi.org/10.1161/JAHA.120.018764>
15. Goldin C, Katz LF, Kuziemko I. The homecoming of American college women: The reversal of the college gender gap. *J Econ Persp* 2006;20:133-56. <https://doi.org/10.1257/jep.20.4.133>
16. Buchmueller TC, Grumbach K, Kronick R, et al. The effect of health insurance on medical care utilization and implications for insurance expansion: A review of the literature. *Med Care Res Rev* 2005;62:3-30. <https://doi.org/10.1177/1077558704271718>

**CORRESPONDENCE:** Dr. Kelven W. Chen, Division of Urology, Centre Hospitalier de l'Université de Montréal, Montreal, QC, Canada; [kelvenchen86@gmail.com](mailto:kelvenchen86@gmail.com)