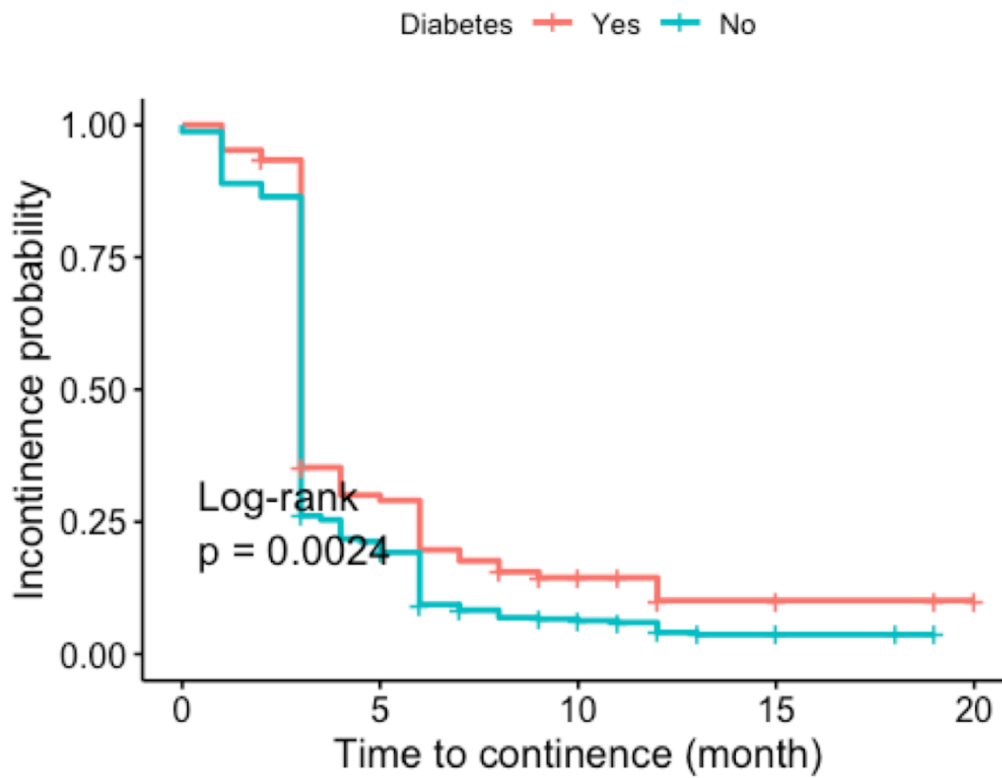


APPENDIX

Supplementary Figure 1. Time to continence in diabetic patients vs. non-diabetic patients.



Guo, et al. Comparison of outcomes in patients with and without neurologic diseases undergoing holmium laser enucleation of the prostate

Supplementary Table 1. Immediate postoperative characteristics (within 90 days post-HoLEP) and long-term postoperative characteristics (90 days and beyond post-HoLEP) based on diabetes mellitus status				
Postoperative characteristic	N (n=531)	Non-DM (n=414)	DM (n=117)	p
Failed same-day voiding trial	475	28 (7.8)	18 (15)	0.026*
Any episode of postop urinary retention	444	27 (8.2)	15 (13)	0.2
Any 90-day complications	440	39 (12)	28 (24)	0.003*
Clavien-Dindo classification of complications	440			0.5
I		21 (5.4)	12 (43)	
II		14 (36)	14 (50)	
IIIA		2 (5.1)	0 (0)	
IIIB		2 (5.1)	2 (7.1)	
UTI within 90 days	440	9 (2.8)	14 (12)	<0.001*
Anticholinergics or beta-3 agonists	395	66 (22)	31 (34)	0.019*
90 days readmission	529	14 (3.4)	14 (12)	<0.001
90 days emergency room visit	435	38 (12)	24 (21)	0.021*
Pelvic floor physical therapy	126	17 (18)	14 (48)	0.002*
Time of last followup (months)	504	5.3 (4.7)	6.0 (5.0)	0.16
Indwelling catheter or CIC	400	0 (0)	3 (3.2)	0.012*
Continence rates at last followup (%)	504	95	86	0.002*
Difference in IPSS score pre- vs postop	307	-14.5 (10.7)	-17.2 (11.4)	0.10
Difference in M-ISI total severity score pre- vs. post-op	108	0.01 (6.0)	1.7 (8.7)	0.5
Difference in M-ISI total bother score pre- vs. postop	106	-0.4 (2.3)	-0.3 (2.9)	0.9

*Statistically significant. BMI: body mass index; CIC: clean intermittent catheterization; ED: emergency department; IPSS: International Prostate Symptom Scores; M-ISI: Michigan Incontinence Symptom Index; ND: neurologic disease; UTI: urinary tract infection.