

A population-based analysis of the epidemiology of penile cancer in Newfoundland and Labrador

W.C. Ian Janes¹, Paul H. Johnston²

¹Faculty of Medicine, Memorial University, St. John's, NL, Canada; ²Division of Urology, Health Sciences Centre, St. John's, NL, Canada

Cite as: Janes WCI, Johnston PH. A population-based analysis of the epidemiology of penile cancer in Newfoundland and Labrador. *Can Urol Assoc J* 2024;18(1):E12-8. <http://dx.doi.org/10.5489/cuaj.8451>

Published online September 29, 2023

ABSTRACT

INTRODUCTION: Penile cancers are a rare subset of carcinomas accounting for <1% of all diagnosed malignancies. There have been recent reports of increasing incidence globally; however, there is limited Canadian literature pertaining to these neoplasms. The province of Newfoundland and Labrador (NL) represents an important entity to study, possessing the highest national incidence of cancer, along with a plethora of relevant risk factors for penile cancer.

METHODS: A retrospective chart analysis of all patients with a diagnosis of penile cancer in NL between the years of 2006 and 2018 was conducted. The main outcomes included overall incidence, proportion with metastatic disease, tumor demographics, and overall survival (OS). Incidence among the male population was calculated using Statistics Canada annual reports.

RESULTS: An identified 81 cases satisfied the inclusion criteria, with a median age at diagnosis of 65 (interquartile range 20) years. Crude incidence of penile cancer ranged from 1.20–4.27/100 000 males in 2007 and 2010, respectively, while the average age-standardized incidence was 2.34/100 000 males across the study timeframe. Metastatic disease was noted in 17 (21.0%) patients, with a five-year OS of 74% for all penile malignancies, decreasing to 66% in those with invasive squamous cell carcinoma.

CONCLUSIONS: The incidence of penile cancer in our population was higher than reported Western jurisdictions and showed frequent rates of metastatic spread. These observations are likely multifactorial, resultant of chronic inflammation paired with high rates of modifiable risk factors and diagnostic delays. An evident need for greater examination and improved reporting of these malignancies in the province was identified.

INTRODUCTION

Penile cancer is a devastating malignancy associated with detrimental impacts on patient quality of life (QoL) and a poor prognosis in the absence of early intervention.^{1,2} These rare malignancies have traditionally accounted for <1% of all cancer diagnoses; however, mixed reporting regarding current trends suggests an increasing incidence globally.³⁻⁵ Contemporary global age-standardized incidence rates (ASIR) are reported at 0.8/100 000; however, these have been shown to vary relative to geographical location, with the highest rates typically observed in less developed nations and infrequent reports in the Western world.^{2,6,7}

There has been limited research conducted on these malignancies in Canada. Lagace et al reported the incidence of invasive penile squamous cell carcinoma (SCC) at 0.61/100 000 males, with a significant increase in crude incidence rate between 1992 and 2010.⁸ Interestingly, the Atlantic Canadian provinces demonstrated ASIR significantly higher than the national average, indicating a greater occurrence of invasive SCC of the penis in these regions.⁸ Similarly, Janes et al reported an increased incidence of penile cancer in Newfoundland and Labrador (NL) during the COVID-19 pandemic; however, these findings were speculated as a secondary result of delayed diagnosis resultant from pandemic-induced shifts in healthcare delivery.⁹

Despite improvements, several gaps in our understanding of these

KEY MESSAGES

- Penile cancer is a rare, yet aggressive malignancy often associated with significant patient morbidity and mortality.
- In Canada, rates of penile malignancy are higher in NL compared to previously reported Western jurisdictions.
- High incidence of penile cancer observed in NL is likely the multifactorial result of chronic inflammation, high rates of modifiable risk factors, and diagnostic delays.
- There are requirements for improved monitoring and reporting of penile cancer and relevant risk factors in NL.

rare malignancies remain, as there is still a lack of extant literature surrounding penile cancer, especially in Canada.^{3,10} One such area that may benefit from further examination of these malignancies is the province of NL. There is a paucity of existing literature surrounding penile cancer in NL and a plethora of prevalent risk factors among this population, paired with some literature evidencing an increasing incidence among industrialized nations.⁷ Further, the province has the highest national incidence of cancer, along with the lowest rates of circumcision, and empiric observations of high rates of penile malignancy.¹¹⁻¹⁴ These considerations, compounded by the status of the province as a microcosm for rare malignancies, indicating the possibility for a founder effect, warrant greater examination of penile cancer in NL.¹¹

The purpose of the present study was to assess the epidemiology and outcomes of penile cancer diagnoses in NL. We hypothesized that the province would have a higher overall incidence of penile cancer diagnoses relative to other reported jurisdictions in the Western world. Additionally, we suspected that incidence of these malignancies has increased in the province over the study timeframe.

METHODS

This study was approved by the provincial health research ethics board at Memorial University (St. Johns, NL, Canada). This population-based study was conducted with all patients with a valid Medical Care Plan (MCP) number from January 1, 2006, to December 31,

2017. Significant variation in the provincial population of NL was observed during the study period, with the male population ranging from 250 402–262 513 in 2007 and 2016, respectively.

Data extraction/sources

All provincial diagnoses of malignancy are recorded in the NL Cancer Care Registry (NLCCR), as mandated by the Newfoundland and Labrador Personal Health Information Act. This study conducted a population-based, retrospective chart analysis of patients in this database with a first diagnosis of penile cancer in NL between the years of 2006 and 2018. Cases were identified using International Classification of Diseases for Oncology, 3rd revision (ICD-O3) code C60 and subcodes defining malignant neoplasms of the penis. All diagnoses of penile cancer identified were included in the data analysis. Tumor behavior in the NLCCR was classified as either invasive or in situ disease. While SCC is typically classified as invasive compared with in situ disease, for the purposes of this study we have made the distinction between invasive SCC and all penile malignancies.

Patients identified in the NLCCR were cross-referenced with the provincial medical database to provide further variables, including patient demographics, tumor characteristics, prevalent risk factors, management, and outcomes. Assessed risk factors included neonatal circumcision status, obesity and body mass index (BMI), tobacco usage, human immunodeficiency virus (HIV), and human papilloma virus (HPV) status, along with localized anatomical factors where available. These variables were dichotomized as present or absent for each patient. Obesity was defined as any BMI ≥ 30 , while smoking status was recorded in a trichotomous fashion as never, former, or current smoker.

Statistical analysis

All statistical analyses were conducted using SPSS version 27.0 (IBM Corporation, Armonk, NY, U.S.). Demographic characteristics of the study cohort were presented as percentages and absolute counts for categorical variables, while means and standard deviations were used to report continuous variables. Crude and ASIR were calculated using Statistics Canada population estimates, with the respective male population for each examined year as the denominator and reported as incidence per 100 000 person-years. Kaplan-Meier curves depicting overall survival (OS) of the cohort were generated for all cases of penile malignancy and for identified cases of SCC, exclusively.

RESULTS

Incidence

A total of 82 cases of penile cancer were identified in the NLCCR between 2006 and 2018, with one exclusion for recurrent disease; therefore, 81 patients were included in the final incidence analysis. Annual incidence varied drastically across the study timeframe, ranging from 1.20/100 000 reported in 2007 to 4.27/100 000 reported in 2010. Average crude incidence of penile malignancy, as well as penile invasive SCC, were reported at 2.62/100 000 (95% confidence interval [CI] 2.05–3.19) and 1.81/100 000 (95% CI 1.34–2.28) across the study period, respectively. Average ASIR was 2.34/100 000 (95% CI 1.83–2.84) for all penile malignancies and 1.60/100 000 (95% CI 1.18–2.10) when examining SCC exclusively. The full breakdown for of crude and ASIR by total cases and SCC only is displayed in Figure 1.

Patient demographics

The median age of males diagnosed with penile cancer was 65 (interquartile range [IQR] 20) years of age.

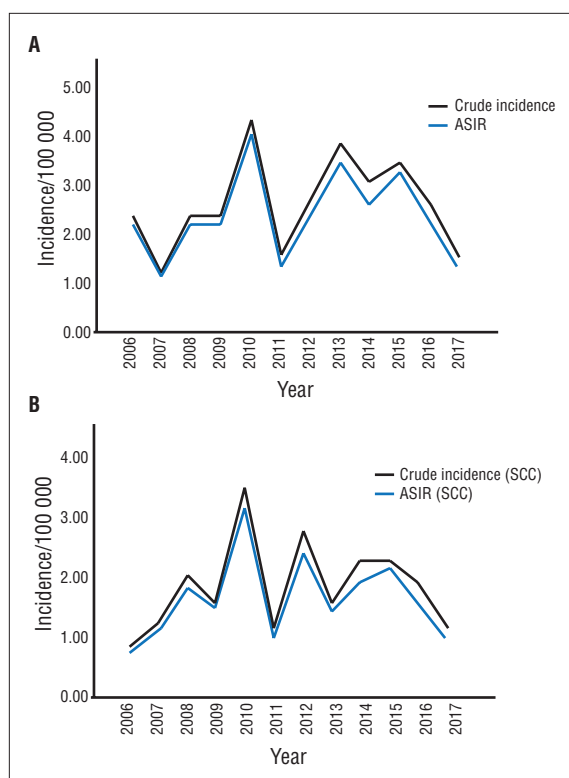


Figure 1. Crude and age-standardized incidence rate (ASIR) of penile cancer cases in Newfoundland and Labrador from 2006–2018 per 100 000. (A) All reported penile malignancy (n=81); and (B) cases of invasive squamous cell carcinoma (SCC) only (n=56).

Previous malignancy was noted in 13 (16%) members of the cohort. HPV-associated disease was reported for only nine (11.1%) patients; however, this variable was inconsistently documented. There were no observed reports of HIV-positive status among our sample. Patient demographic and risk factor profiles were available and assessed for 65 (80%) cases, for which a full breakdown is detailed in Table 1.

Malignancy characteristics

The most common presentations of the primary tumor were carcinoma in situ (Tis) and T1 lesions, each reported in 23 (28.4%) cases, while early-stage disease (0–II) was identified in 59 (72.8%) patients.

Table 1. Patient demographics for males diagnosed with penile cancer in NL from 2006–2018

Patient demographics & risk profile	Mean (±SD)	n (%) (N=81)
Age (n=81)	62.93 (±13.92)	
BMI (n=50)	30.65 (±9.53)	
Obesity		
Yes		26 (32.1%)
No		27 (33.3%)
Unknown		28 (34.6%)
Smoking status		
Never		29 (35.8%)
Former		16 (19.6%)
Current		17 (21.0%)
Unknown		19 (23.5%)
BXO		
Yes		23 (28.4%)
No		34 (42.0%)
Unknown		24 (29.6%)
Phimosis		
Yes		20 (24.7%)
No		38 (46.9%)
Unknown		23 (28.4%)
HPV status		
Positive		9 (11.1%)
Negative		56 (69.1%)
Unknown		16 (19.8%)
HIV status		
Positive		0 (0.0%)
Negative		65 (80.2%)
Unknown		16 (19.8%)
Neonatal circumcision		
Uncircumcised		55 (68.0%)
Circumcised		5 (6.0%)
Unknown		21 (26.0%)

BMI: body mass index; BXO: balanitis xerotica obliterans; HIV: human immunodeficiency virus; HPV: human papilloma virus; NL: Newfoundland and Labrador; SD: standard deviation.

Stage was not reported or not applicable for six (7.4%) patients. Similarly, grade was absent from 35 (43.2%) reports, with the most common presentation among reported cases being G2 disease seen in 22 (27.2%) patients. Lymphovascular invasion and perineural invasion were each identified in five (6.2%) independent cases, respectively, while a further three (3.7%) patients had both. There were 17 (21.0%) patients with documented disease spread at diagnosis. There were no documented reports of progression from non-invasive to invasive disease. Further classification of disease characteristics is summarized in Table 2.

Disease management & outcomes

Surgical resection was the most common treatment for penile cancer, with 56 (69.1%) patients receiving operative intervention. Individual radio- and chemotherapy were used in four and one case, respectively, while concurrent dual-modality treatment regimens were employed in five (6.2%) patients. A full overview of employed treatment modalities for all cases of penile cancer and exclusively for cases of invasive SCC can be found in Table 3.

There were 33 (40.7%) individuals who died within the study period, 13 (39.4%) of whom succumbed to their malignancy. When exclusively examining patients with invasive SCC, there were 25 (44.6%) mortalities in the study timeframe, with 13 (52.0%) deaths attributable to penile malignancy. There were five (6.2%) patients for whom definitive cause of death could not be elicited. The five-year OS among the entire cohort was 74%, whereas five-year OS for SCC was 66%. Kaplan-Meier survival curves depicting OS are displayed in Figure 2.

DISCUSSION

The present study sought to assess the epidemiology of penile cancer in NL, with our results demonstrating an absence of incidence trends but consistently documented an elevated incidence compared with reported global ASIR. In the most recent and comprehensive reviews on the epidemiology of penile cancer to date, the worldwide ASIR was reported at

Table 2. Characteristics of malignancy for males diagnosed with penile cancer in NL from 2006–2018

Malignancy characteristics	All cases (N=81)	Invasive SCC (n=56)
Initial anatomic site, n (%)		
Foreskin	16 (19.8%)	6 (10.7%)
Glans	32 (39.5%)	22 (39.3%)
Overlapping/multiple	16 (19.8%)	15 (26.8%)
Penile shaft	5 (6.2%)	4 (7.1%)
NOS	12 (14.8%)	9 (16.1%)
Nodal involvement, n (%)		
Ipsilateral inguinal	10 (12.4%)	10 (17.9%)
Bilateral inguinal	5 (6.2%)	5 (8.9%)
Pelvic	4 (4.9%)	4 (7.1%)
Unknown	16 (19.6%)	12 (21.4%)
Distant metastases, n (%)		
M0	63 (77.9%)	43 (76.8%)
M1	2 (2.5%)	2 (3.6%)
MX	16 (19.6%)	12 (21.4%)
Stage, n (%)		
0	23 (28.4%)	0 (0.0%)
I	23 (28.4%)	21 (37.5%)
II	13 (16.0%)	13 (23.2%)
III	6 (7.4%)	6 (10.7%)
IV	10 (12.3%)	10 (17.9%)
Not applicable	1 (1.2%)	0 (0.0%)
Unknown	5 (6.2%)	5 (8.9%)
Grade, n (%)		
G1	20 (24.7%)	20 (35.1%)
G2	22 (27.2%)	21 (36.8%)
G3	4 (4.9%)	4 (7.0%)
Unknown/not applicable	35 (43.2%)	12 (21.1%)
Histology, n (%)		
SCC	56 (69.1%)	56 (100.0%)
SCC in-situ	23 (28.4%)	
Other	2 (2.5%)	
Malignant melanoma	1 (1.2%)	
Kaposi's sarcoma of the penis	1 (1.2%)	

NL: Newfoundland and Labrador; NOS: not otherwise specified; SCC: squamous cell carcinoma.

Table 3. Treatment modalities employed in the management of individuals diagnosed with penile cancer in NL from 2006–2018

Treatment modality	All cases (N=81)	Invasive SCC (n=56)
None, n (%)	4 (4.9%)	3 (5.3%)
Topical immunotherapy, n (%)	11 (13.5%)	4 (7.1%)
Surgery, n (%)	56 (69.1%)	41 (73.2%)
Circumcision	13 (16.0%)	4 (7.1%)
Partial penectomy	31 (38.2%)	27 (48.2%)
Total penectomy	7 (8.6%)	7 (8.6%)
Local excision	4 (4.9%)	2 (3.6%)
Other	1 (1.2%)	1 (1.8%)
Chemotherapy, n (%)	6 (10.3%)	6 (10.7%)
Radiotherapy, n (%)	9 (11.1%)	8 (14.3%)
Documentation unavailable, n (%)	17 (20.1%)	12 (21.4%)

Note: Patients were not classified exclusively into one category and may have had multiple treatment modalities. NL: Newfoundland and Labrador; SCC: squamous cell carcinoma.

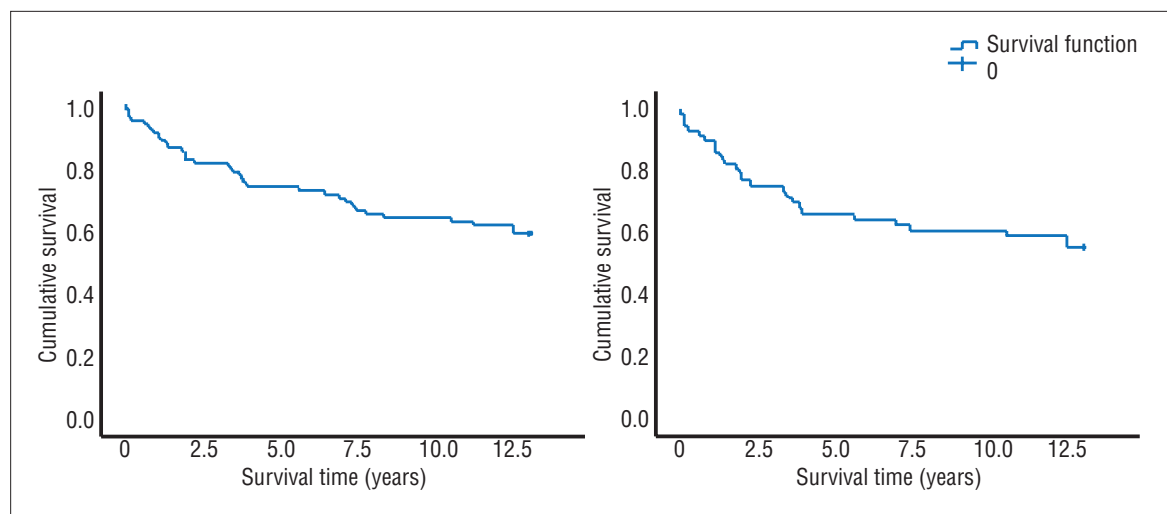


Figure 2. Kaplan-Meier survival curve depicting time to death in males diagnosed with penile cancer between January 1, 2006, and December 31, 2017. (A) All reported penile malignancy (n=81); and (B) cases of invasive squamous cell carcinoma (SCC) only (n=56).

approximately 0.8/100 000.^{6,7} American data, assessed using the Survival, Epidemiology and End Results (SEER) program, demonstrated similar or lesser values for the occurrence of penile cancer, with suggestions of multifactorial increases in incidence over time.^{15,16} Canadian Cancer Statistics data from 2018 indicated an overall incidence rate of approximately 1.05/100 000 when calculated from the Statistics Canada male population at this time.¹³ These reports are consistent with current epidemiologic interpretations of lower incidence among developed nations.^{2,6,7}

Despite limited research in Canada, a small subset of studies has examined penile cancer in variable national settings. Lagace et al reported national ASIR of penile SCC between 1992 and 2010 at 0.68/100 000 males and noted four provinces, including NL, to have significantly higher rates than the rest of the country.⁸ The results of the present study provide further support for the findings of these authors, given the consistently elevated incidence of penile cancer above previously reported averages during the study timeframe.

Two additional Canadian studies conducted by Mahmud et al and Beech et al documented incidence rates lower than 1/100 000 at their institutions from 2000–2010 and 2005–2015, respectively.^{10,17} An important difference between our study and that of the previous authors was the inclusion of SCC in situ, along with other malignant penile afflictions. In allowing comparability, we dichotomized the presented data into categories representing all cases of penile malignancy and as those exclusively SCC. As such, our findings of an elevated incidence rate are further justified, with an

average ASIR of 1.60/100 000 for penile SCC across the study timeframe.

Our results provide further support for the incidental discovery by Janes et al, which suggested an elevated incidence of penile cancer in NL during the COVID19 pandemic;⁹ however, contrary to previous speculations, our findings suggest increased incidence was not exclusive to pandemic-induced delays and provide evidence of ongoing high rates of penile malignancy in NL.

Evidently, the occurrence of penile cancer in NL is greater than that reported in previously published North American literature, the reasons for which are likely multifactorial, owing to possible genetic interaction in the presence of chronic localized inflammation paired with high rates of modifiable risk factors. The presence of the foreskin in men remains one of the most important considerations for contraction of HPV infection among sexually active males.¹⁸ Extant literature has suggested some evidence of a protective effect of neonatal circumcision, with reduction in rates of HPV and, by extension, penile malignancy.^{18,19} While there was a near absence of neonatal circumcision among our cohort, this undertaking remains a controversial topic with current Canadian guidelines, as poor penile hygiene and associated subsequent chronic inflammation are more significant considerations in risk for development.²⁰⁻²² Despite the inability to completely represent risk factor profile due to lack of consistent reporting, a large percentage of our study population still presented with various localized and systemic risk factors for penile cancer.

Plausibly, the numerous documented etiologic factors from a localized anatomical level including phi-

mosis, chronic inflammation, poor hygiene, balanitis xerotica obliterans (BXO), and penile trauma likely had a significant impact on the development of penile malignancies.²³⁻²⁸ Phimosi and BXO were present in 32.3% and 37.1% of accessible patient cases, respectively, and were likely to be underreported among our cohort, as they are not documented in the same manner as systemic-level conditions at our institution. In addition to localized concerns, smoking and obesity status, among other modifiable risk factors, have also been implicated in the development of penile cancer and are more frequently reported.^{21,29} Our study demonstrated a history of smoking in 50% of individuals for whom reports were available, while 40% were classified as obese. Evidently, despite inadequate access to reported data in our province, a plethora of prevalent risk factors were still identified among a large proportion of our study population. Such findings provide explanations that may have contributed to a greater predisposition to penile cancer and subsequent impacts to QoL and OS.

Canadian data has indicated a median cancer-specific survival (CSS) of 60% for individuals afflicted with penile cancer at 8.5 years.¹⁰ Median CSS for our population could not be defined, however, our results indicated an OS of 74% at five years, which decreased to 66% in those with invasive penile SCC. The OS for individuals diagnosed with penile cancer is often multifactorial, with numerous studies indicating an average five-year OS from 60–65%.³⁰⁻³² Findings of the present study indicated OS in our population equivalent to or better than that reported by previous authors. These results directly contrast the findings of Janes et al, who found 40% mortality over a 28-month period throughout the COVID-19 pandemic in which significant diagnostic delays were documented. Our observed high survival rate is likely a result of the early-stage presentation (Tis–T2) documented in approximately 73% of patients diagnosed with penile cancer during the study timeframe. Such findings further support the necessity for early-stage diagnosis and timely intervention in preventing detrimental outcomes for this patient population.

The undertaking of this population-based study further revealed an inability to collect complete risk and survival data for several patients diagnosed with penile cancer, a finding that has been mirrored in various previous publications in this area.^{10,17,33} While these findings do not impact conclusion surrounding incidence, they impair the ability to draw definitive conclusions regarding CSS and disease development. Future

research should focus on eliciting a full risk factor profile for the examined population, while also attempting to examine additional potential factors that may have contributed to the observed high rates of penile cancer in NL. Given the elevated diagnoses among this population, it would be appropriate to develop a database designed to track and monitor these neoplasms as understanding and management of these rare malignancies in the Western world continues to evolve.

Limitations

Several limitations that must be considered when interpreting the results of the present analysis.

The major identified limitation exists in the lack of consistency in reporting of penile cancer over time; as such, we were unable to retrieve complete information on several variables, including grading and staging, for these malignancies. The lack of documentation pertaining to pertinent risk factors among our cohort poses a further limitation to the ability to quantify relevant risk for developing penile cancer in our population. Despite these considerations, we are confident our results reflect an elevated incidence of penile cancer relative to extant literature that prompts the need for greater investigation of these malignancies in our province.

A further important consideration exists in the unique population profile that has typically been present in NL, which may limit the applicability of our results to other populations. Such drawbacks are inherent to any retrospective, population-based study; however, we believe that the long duration of followup, paired with a global trend in increasing incidence of these tumors, justifies the generalization of our findings and provides a comprehensive epidemiologic picture of penile cancer.

CONCLUSIONS

The present study demonstrated higher rates of penile cancer in NL than previously reported in other Western jurisdictions. These observations are likely multifactorial, resultant from chronic inflammation paired with high rates of modifiable risk factors and potential genetic interplay. There is an evident need for greater examination and discussion of these malignancies in the province aimed at educating males around this often-lethal malignancy.

COMPETING INTERESTS: The authors do not report any competing personal or financial interests related to this work.

This paper has been peer-reviewed.

REFERENCES

1. Alnajjar HM, MacAskill F, Christodoulidou M, et al. Long-term outcomes for penile cancer patients presenting with advanced N3 disease requiring a myocutaneous flap reconstruction or primary closure - a retrospective, single-centre study. *Transl Androl Urol* 2019;8:S13-21. <https://doi.org/10.21037/tau.2019.01.05>
2. Stecca CE, Alt M, Jiang DM, et al. Recent advances in the management of penile cancer: A contemporary review of the literature. *Oncol Ther* 2021;9:21-39. <https://doi.org/10.1007/s40487-020-00135-z>
3. Andini M, Ahmed M, Basile G, et al. A global approach to improving penile cancer care. *Nat Rev Urol* 2021;19:231-9. <https://doi.org/10.1038/s41585-021-00557-y>
4. Kidd LC, Chaing S, Chipollini J, et al. Relationship between human papillomavirus and penile cancer-implications for prevention and treatment. *Transl Androl Urol* 2017;6:791-802. <https://doi.org/10.21037/tau.2017.06.27>
5. Douglawi A, Masterson TA. Updates on the epidemiology and risk factors for penile cancer. *Transl Androl Urol* 2017;6:785-90. <https://doi.org/10.21037/tau.2017.05.19>
6. Montes Cardona CE, García-Perdomo HA. Incidence of penile cancer worldwide: Systematic review and meta-analysis. *Rev Panam Salud Pública* 2017;41:1-10. <https://doi.org/10.26633/RPSP.2017.117>
7. Fu L, Tian T, Yao K, et al. Global pattern and trends in penile cancer incidence: Population-based study. *JMIR Public Heal Surveill* 2022;8:1-15. <https://doi.org/10.2196/34874>
8. Lagacé F, Ghazawi FM, Le M, et al. Penile invasive squamous cell carcinoma: Analysis of incidence, mortality trends, and geographic distribution in Canada. *J Cutan Med Surg* 2020;24:124-8. <https://doi.org/10.1177/1203475419888869>
9. Janes WC, Henley J, Andrews M, et al. A quality assurance review of penile cancer diagnostic delays and stage at presentation during the COVID-19 pandemic. *Can Urol Assoc J* 2023;17:E134-40. <https://doi.org/10.5489/cuaj.8143>
10. Beech B, Izawa J, Pautler S, et al. Penile cancer: Perspective from a Canadian tertiary care centre. *Can Urol Assoc J* 2015;9:315-9. <https://doi.org/10.5489/cuaj.3230>
11. Rahman P, Jones A, Curtis J, et al. The Newfoundland population: A unique resource for genetic investigation of complex diseases. *Hum Mol Genet* 2003;12:167-72. <https://doi.org/10.1093/hmg/ddg257>
12. Zhai G, Zhou J, Woods MO, et al. Genetic structure of the Newfoundland and Labrador population: Founder effects modulate variability. *Eur J Hum Genet* 2016;24:1063-70. <https://doi.org/10.1038/ejhg.2015.256>
13. Canadian Cancer Statistics Advisory Committee. Canadian Cancer Statistics 2019.; 2019.
14. Public Health Agency of Canada. What Mothers Say: The Canadian Maternity Experience Survey.; 2009.
15. Deng X, Liu Y, Zhan X, et al. Trends in incidence, mortality, and survival of penile cancer in the United States: A population-based study. *Front Oncol* 2022;12:1-10. <https://doi.org/10.3389/fonc.2022.891623>
16. Qi F, Wei X, Zheng Y, et al. Incidence trends and survival outcomes of penile squamous cell carcinoma: evidence from the Surveillance, Epidemiology, and End Results population-based data. *Ann Transl Med* 2020;8:1428-42. <https://doi.org/10.21037/atm-20-1802>
17. Mahmud A, Qu X, Yip D, et al. The patterns of practice and outcomes of penile cancer in Ontario. *Clin Oncol* 2017;29:239-47. <https://doi.org/10.1016/j.clon.2016.12.006>
18. Rodríguez-Álvarez MI, Gómez-Urquiza JL, Husein-El Ahmed H, et al. Prevalence and risk factors of human papillomavirus in male patients: A systematic review and meta-analysis. *Int J Environ Res Public Health* 2018;15:1-12. <https://doi.org/10.3390/ijerph15102210>
19. Larke NL, Thomas SL, Dos Santos Silva I, et al. Male circumcision and penile cancer: A systematic review and meta-analysis. *Cancer Causes Control* 2011;22:1097-110. <https://doi.org/10.1007/s10552-011-9785-9>
20. Dave S, Afshar K, Braga LH, et al. Canadian urological association guideline on the care of the normal foreskin and neonatal circumcision in Canadian infants (Full version). *J Can Urol Assoc* 2018;12:E76-99. <https://doi.org/10.5489/cuaj.5033>
21. Daling JR, Madeleine MM, Johnson LG, et al. Penile cancer: Importance of circumcision, human papillomavirus and smoking in situ and invasive disease. *Int J Cancer* 2005;116:606-16. <https://doi.org/10.1002/ijc.21009>
22. Morrison BF. Risk factors and prevalence of penile cancer. *West Indian Med J* 2014;63:559-60. <https://doi.org/10.7727/wimj.2015.381>
23. Li K, Wu G, Fan C, et al. The prognostic significance of primary tumor size in squamous cell carcinoma of the penis. *Discov Oncol* 2021;12. <https://doi.org/10.1007/s12672-021-00416-7>
24. Li F, Xu Y, Wang H, et al. Diagnosis and treatment of penile verrucous carcinoma. *Oncol Lett* 2015;9:1687-90. <https://doi.org/10.3892/ol.2015.2909>
25. Thomas A, Necchi A, Muneer A, et al. Penile cancer. *Nat Rev Dis Prim* 2021;7. <https://doi.org/10.1038/s41572-021-00246-5>
26. Pietrzak P, Hadway P, Corbishley CM, et al. Is the association between balanitis xerotica obliterans and penile carcinoma underestimated? *BJU Int* 2006;98:74-6. <https://doi.org/10.1111/j.1464-410X.2006.06213.x>
27. Morrison BF. Risk factors and prevalence of penile cancer. *West Indian Med J* 2014;63:559-60. <https://doi.org/10.7727/wimj.2015.381>
28. Madsen BS, Van Den Brule AJC, Jensen HL, et al. Risk factors for squamous cell carcinoma of the penis - Population-based case-control study in Denmark. *Cancer Epidemiol Biomarkers Prev* 2008;17:2683-91. <https://doi.org/10.1158/1055-9965.EPI-08-0456>
29. Barnes KT, McDowell BD, Button A, et al. Obesity is associated with increased risk of invasive penile cancer. *BMC Urol* 2016;16:7-10. <https://doi.org/10.1186/s12894-016-0161-7>
30. Verhoeven RHA, Janssen-Heijnen MLG, Saum KU, et al. Population-based survival of penile cancer patients in Europe and the United States of America: No improvement since 1990. *Eur J Cancer* 2013;49:1414-21. <https://doi.org/10.1016/j.ejca.2012.10.029>
31. Hansen BT, Orumaa M, Lie AK, et al. Trends in incidence, mortality and survival of penile squamous cell carcinoma in Norway 1956–2015. *Int J Cancer* 2018;142:1586-93. <https://doi.org/10.1002/ijc.31194>
32. Pham MN, Deal AM, Ferguson JE, et al. Contemporary survival trends in penile cancer: Results from the National Cancer Database. *Urol Oncol Semin Orig Investig* 2017;35:674.e1-9. <https://doi.org/10.1016/j.urolonc.2017.08.009>
33. Sewell J, Ranasinghe W, De Silva D, et al. Trends in penile cancer: A comparative study between Australia, England and Wales, and the US. *Springerplus* 2015;4. <https://doi.org/10.1186/s40064-015-1191-4>

CORRESPONDENCE: Dr. W.C. Ian Janes, Faculty of Medicine, Memorial University, St. John's, NL, Canada; wcij85@mun.ca