

# Dorsal shortening vs. ventral lengthening for congenital ventral curvature in patients with/without severe hypospadias

## A meta-analysis of comparative studies

Michael Chua<sup>1,2,3</sup>, Priyank Yadav<sup>2</sup>, Adam Bobrowski<sup>1,2</sup>, Jin Kyu Kim<sup>1,2</sup>, Jan Michael Silangcruz<sup>3</sup>, Jessica Ming<sup>4</sup>, Mandy Rickard<sup>2</sup>, Armando Lorenzo<sup>1,2</sup>, Darius Bagli<sup>1,2</sup>, Antoine Khoury<sup>5</sup>

<sup>1</sup>Global Surgery Department, University of Toronto, Toronto, ON, Canada; <sup>2</sup>Division of Urology, The Hospital for Sick Children, Toronto, ON, Canada; <sup>3</sup>Institute of Urology, St. Luke's Medical Center, Quezon City, Philippines; <sup>4</sup>Department of Surgery, University of New Mexico, Albuquerque, NM, United States; <sup>5</sup>Pediatric Urology Department, University of California Irvine, Los Angeles, CA, United States

Cite as: Chua M, Yadav P, Bobrowski A, et al. Dorsal shortening vs. ventral lengthening for congenital ventral curvature in patients with/without severe hypospadias: A meta-analysis of comparative studies. *Can Urol Assoc J* 2023;17(7):E208-14. <http://dx.doi.org/10.5489/cuaj.8223>

Published online April 11, 2023

Appendix available at [cuaj.ca](http://cuaj.ca)

### ABSTRACT

**INTRODUCTION:** Herein, we compared surgical outcome of dorsal shortening (DS) vs. ventral lengthening (VL) for correcting congenital ventral curvatures.

**METHODS:** A systematic literature search was performed in September 2021 using the PubMed, EMBASE, Scopus, CENTRAL, ProQuest, and Clinicaltrials.gov databases. Comparative studies were identified and evaluated according to Cochrane Collaboration recommendations. Assessed outcomes included success and complication rates, which were extrapolated for the respective odds ratios (OR) with 95% confidence intervals (CIs). Subgroup analyses were performed according to congenital curvature, with or without severe hypospadias or recurrent curvatures (PROSPERO: CRD42021276193).

**RESULTS:** Based on pooled effect estimates from 12 studies with 430 (DS 253, VL 177) cases of ventral curvature repair, VL rendered a better success rate for curvature correction (OR 4.20, 95% CI 2.11, 8.33) than DS, with comparable composite surgical complication rates (OR 0.77, 95% CI 0.27, 2.18). Subgroup analysis showed that the success rate remained significantly better for VL among patients with associated severe hypospadias (OR 3.59, 95% CI 1.25, 10.26) and recurrent penile curvatures (OR 5.70, 95% CI 1.69, 19.21) but not among those with congenital curvature without hypospadias or those with mild hypospadias (OR 2.99, 95% CI 0.32, 27.57).

**CONCLUSIONS:** For congenital curvature associated with severe hypospadias and recurrent curvatures, VL renders a modestly better success rate; however, careful selection of patients is key for best outcome.

### INTRODUCTION

The congenital ventral curvature of the penis can be an isolated condition, although it is more commonly associated with severe hypospadias.<sup>1</sup> Owing to the long-term functional issues associated with penile curvature, correction of the ventral curvature is considered a critical step in hypospadias repair.<sup>2</sup> Furthermore, many complications from hypospadias repair are associated with recurrence or inadequate curvature correction.<sup>3,4</sup> Clinically significant penile curvature  $>30^\circ$  has been reported to negatively affect future sexual functionality and satisfaction.<sup>2</sup> Various surgical correction approaches have been reported in the literature, with the majority advocating for dorsal shortening (DS) because of its simplicity and minimally invasive nature compared with ventral lengthening (VL), which involves urethral mobilization and corporotomies with or without the use of grafting/flap.<sup>1-4</sup>

Ongoing debates remain regarding the correction of clinically significant ( $>30^\circ$ ) congenital penile ventral curvature in patients with and without severe hypospadias. Herein, we aimed to compare the surgical outcomes of the DS and VL procedures for the correction of congenital ventral curvatures through a systematic review and meta-analysis of the available literature.

### METHODS

The review was registered a priori in the PROSPERO registry (CRD42021276193) and performed

according to the Cochrane Collaboration recommendations.<sup>5</sup> In addition, the reporting of this systematic review and meta-analysis was guided by the Preferred Reporting Items for Systematic Review and Meta-Analysis (PRISMA) statement and domains described by A MeaSurement Tool to Assess systematic Reviews (AMSTAR-2).<sup>6,7</sup>

## Population, intervention, comparison, and outcome assessment (PICO)

This systematic review and meta-analysis focused on the pediatric population with congenital penile curvature with or without hypospadias that underwent surgical correction. Specifically, for primary repair of congenital curvature at least 30 degrees, staged hypospadias repair due to severe ventral curvature, or recurrent ventral curvature correction. The intervention and comparator surgical approaches were VL (which involves urethral mobilization and corporotomies with or without use of grafting/flap) and DS (including techniques of dorsal plication). The primary outcome for comparison was the curvature improvement per intervention groups on the various studies' longest reported followup data. The composite complication rates related to the intervention were also assessed.

## Identification of the literature

A systematic literature search was performed in September 2021 using a medical library reference service specialist. The electronic databases used for the literature search were PubMed, EMBASE, Scopus (limited to medicine), and Cochrane Library. Furthermore, ProQuest dissertations and theses globals were searched for gray literature. No language restrictions were applied. This was performed to capture all relevant studies and minimize possible reporting and publication bias. Relevant review articles were also identified for cross-referencing to identify the eligible titles. When feasible, communication with the corresponding authors of the included studies was attempted to clarify any missing or ambiguous information. Appendix A (available at [cuaj.ca](http://cuaj.ca)) details the platform-specific and topic-sensitive search strings used in each electronic database.

## Evaluation of the literature and publication bias

Two reviewers (MEC and PY) independently reviewed the retrieved records to screen and identify citations of all comparative studies in the pediatric literature that assessed the surgical outcomes of significant

congenital ventral penile curvature with or without hypospadias. Comparative studies that assess the surgical intervention of DS (plication techniques) vs. VL (corporotomies with or without graft/flap) were considered eligible. All citations flagged by either reviewer were retrieved for further full-text evaluation to assess their eligibility for quantitative meta-analysis. Only the most recent and comprehensive data were included in the extraction when duplicate publications were encountered by the same author group. Studies were excluded when the intervention comparison did not involve the DS vs. VL approach or when both correction approaches were used.

Similarly, publications that did not cluster surgical outcomes according to the intervention were excluded. In addition, adult patient studies, single-group cohorts, reviews, and commentaries were excluded. Any disagreements were resolved through reconciliation by a third reviewer (JJK).

Two reviewers (MEC and JMS) independently assessed the risk of bias according to the recommendations of the Cochrane Collaboration for the evaluation of interventional studies.<sup>5,8</sup> No eligible randomized clinical trial (RCT) was identified on the topic, and the included non-RCT comparative studies were assessed using the ROBINS-I tool.<sup>8</sup> A funnel plot was generated to assess publication bias.

## Data extraction, synthesis, and classification

Study characteristics (study source, study design, sample size, patient age, curvature/hypospadias characteristics, surgical approach, outcome assessed, and followup duration) and surgical outcomes were extracted and tabulated by one reviewer (MEC) and counter-verified by two other reviewers (PY and AB). RevMan5 (Review Manager, Version 5.4, Cochrane Collaboration, 2020) program software was used for data analysis and synthesis of the forest and funnel plots. For publications with incomplete or insufficient data, the event rate (success rate) was extrapolated from available information, such as reported surgical failure or curvature recurrence/persistence.

The primary outcome evaluated in this meta-analysis was the success rate of curvature correction, as assessed in second-stage repair or eventual followup. Complication rate was the secondary outcome. The reported event rate per intervention group was extrapolated as dichotomous data and pooled as odds ratios (OR) with corresponding 95% confidence intervals (CI). To mitigate methodological variability among the includ-

ed studies, effect estimates of OR were pooled using the Mantel-Haenszel (M-H) method, with a random-effects model to generate an average treatment effect.<sup>5,9,10</sup>

### Assessment of heterogeneity, subgroup analysis, and publication bias

Cochran's  $\chi^2$  test was used to assess heterogeneity among the included studies. Considering the small number of studies (and relatively small sample sizes within each) included in the meta-analysis, a p-value of  $<0.10$  was applied to detect heterogeneity, while the  $I^2$  statistic was used to quantify between-study variations, with  $>40\%$  defined as an assumption of substantial inter-study variability.<sup>5</sup> Predefined subgroup analyses were performed according to the study population: congenital ventral curvature with or without severe hypospadias and recurrent ventral curvature. The subgroup analysis enables not only the etiology but also the outcome measure differences. A funnel plot generated using RevMan5 was used to determine publication bias. Finally, GRADE criteria were used to assess the certainty of the evidence generated.<sup>11</sup>

## RESULTS

A total of 1268 records were retrieved from a comprehensive literature search. Subsequently, 72 duplicates were excluded. After an initial screening of 1198 records, 1003 were excluded based on their title and abstract relevance. Finally, a full-text review of 195 articles was performed to determine eligibility; 183 articles were excluded for various reasons, as detailed in the PRISMA flow diagram (Figure 1).

### Study characteristics

Twelve non-randomized, retrospective comparative studies were included in the meta-analysis.<sup>12-23</sup> Seven studies were conducted in the United States,<sup>12,15-17,20,21,23</sup> two in Canada,<sup>14,18</sup> two in Japan,<sup>19,22</sup> and one in Egypt.<sup>13</sup> Two studies enrolled patients with congenital ventral penile curvature without hypospadias or with a mild variant of the condition.<sup>17,19</sup> Seven studies included patients with ventral curvature associated with severe hypospadias,<sup>13-16,18,20,23</sup> whereas three studies assessed the correction of recurrent ventral curvatures.<sup>12,21,22</sup> The degree of curvature among the included studies was at least  $<30^\circ$ .

Eligible studies included patients who had undergone surgery between 1980 and 2018. The patients' ages ranged from three months to 21 years. The reported followup period for outcome assessment ranged from six months to 15 years post-surgery. The DS techniques

described included the Nesbit, Baskin, and Allen-Spence procedures, while the VL techniques included deep transverse incision of tunica albuginea (DTITA)/tunica albuginea incision (TAI) with/without tunica vaginalis flap/graft or dermal/SIS graft. Supplementary Table 1 summarizes the study characteristics in detail (Appendix B available at [cuaj.ca](http://cuaj.ca)).

### Study quality

Based on the ROBINS-I risk of bias evaluation of all included studies, the overall assessment was determined to have a high risk of bias. Additionally, bias secondary to confounders was the most prevalent type of bias in the included studies. Supplementary Table 2 (Appendix B available at [cuaj.ca](http://cuaj.ca)) details the ROBINS-I evaluation and consensus of the two reviewers.

### Treatment effects

Overall, based on the pooled effect estimates from the 12 studies with 430 cases of ventral curvature repair (253 DS, 177 VL), VL repair resulted in a better curvature correction rate than DS repair (OR 4.20, 95% CI 2.11, 8.33) (Figure 2). In the subgroup analysis performed according to curvature etiology, pooled-effect estimates from two studies showed that among congenital curvatures with no or mild hypospadias, there was no significant difference in curvature correction between the two approaches (OR 2.99, 95% CI 0.32, 27.57). In the correction of ventral curvature associated with severe hypospadias, based on six studies' pooled-effect estimates, VL resulted in a higher rate of curvature correction (OR 3.59, 95% CI 1.25, 10.26). In three studies that assessed recurrent ventral curvature, VL showed a significantly better curvature correction rate than DS (OR 5.70, 95% CI 1.69, 19.21).

Among the five studies that reported the complication rate in each surgical group, the pooled composite complication event rate seemed equivocal for both approaches (OR 0.77, 95% CI 0.27, 2.18) (Figure 3); however, in a study that assessed the complication rate among congenital curvatures with no or mild hypospadias, complications related to urethroplasty (urethral stenosis and urethrocutaneous fistula) were mainly observed in the VL group. Therefore, VL may have resulted in a higher composite complication rate in this group. No statistically significant difference between the approaches was noted, however, for the ventral curvature subgroup with severe hypospadias (OR 0.59, 95% CI 0.23, 1.49).

## Heterogeneity, publication bias, and GRADE criteria

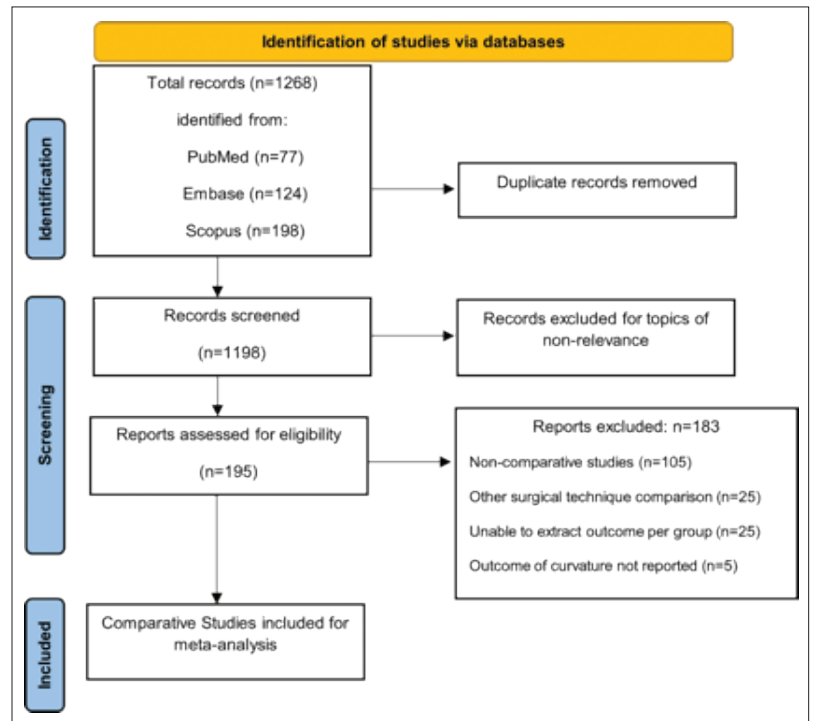
For overall curvature correction, pooled-effect estimates, and subgroup analysis, heterogeneity was not evident based on the Chi-squared test, showing  $p > 0.1$ , with an inter-study variability of 0–20%. Similarly, no overall variability was detected for subgroup differences, and an  $I^2$  value of 0% justified subgroup analysis of the included studies. Nonetheless, significant overall heterogeneity was noted in assessing composite complications between intervention groups. The Chi-squared test demonstrated  $p = 0.09$  with  $I^2 = 50\%$  (Figures 2, 3).

As only a few studies were included, the generated funnel plot could be underpowered; however, this did not suggest the presence of publication bias. The assessed studies were symmetrically plotted across the average OR, with most studies plotting above 1.96 SE (log OR) (Figure 4).

Based on the GRADE criteria, the risk of bias was considered serious, with a two-level downgrade on evidence certainty. The assessment of heterogeneity (Chi-squared  $p > 0.10$ ) and inter-study variability ( $I^2 < 40\%$ ) have shown to be non-significant for the primary outcome, while for the composite complication, the heterogeneity was explained and improved with subgroup analysis; hence, the domains of inconsistency do not warrant any further downgrading. Although all included studies have directly assessed the surgical success based on the outcome of curvature correction, various ventral lengthening procedures are described even within the study; this has downgraded the certainty of evidence based on the domain of indirectness. With a 30% relative risk reduction and  $> 100$  control group event rate, the optimal information size criterion was met. As the pooled-effect estimate 95% CI has for the primary outcome of success excludes no effect (CI around OR excludes 1.0), the precision was determined to be adequate, and thus, the domain of imprecision do not render downgrading. Based on the funnel plot generated, no publication bias was suggested, and no further downgrading of the evidence certainty was applied. The domain that could mitigate the risk of bias included a large magnitude of effect, which seemed to be remarkably consistent among patients with severe hypospadias and recurrent curvatures. Thus, the available evidence based on overall GRADE criteria is considered low to very low.

## DISCUSSION

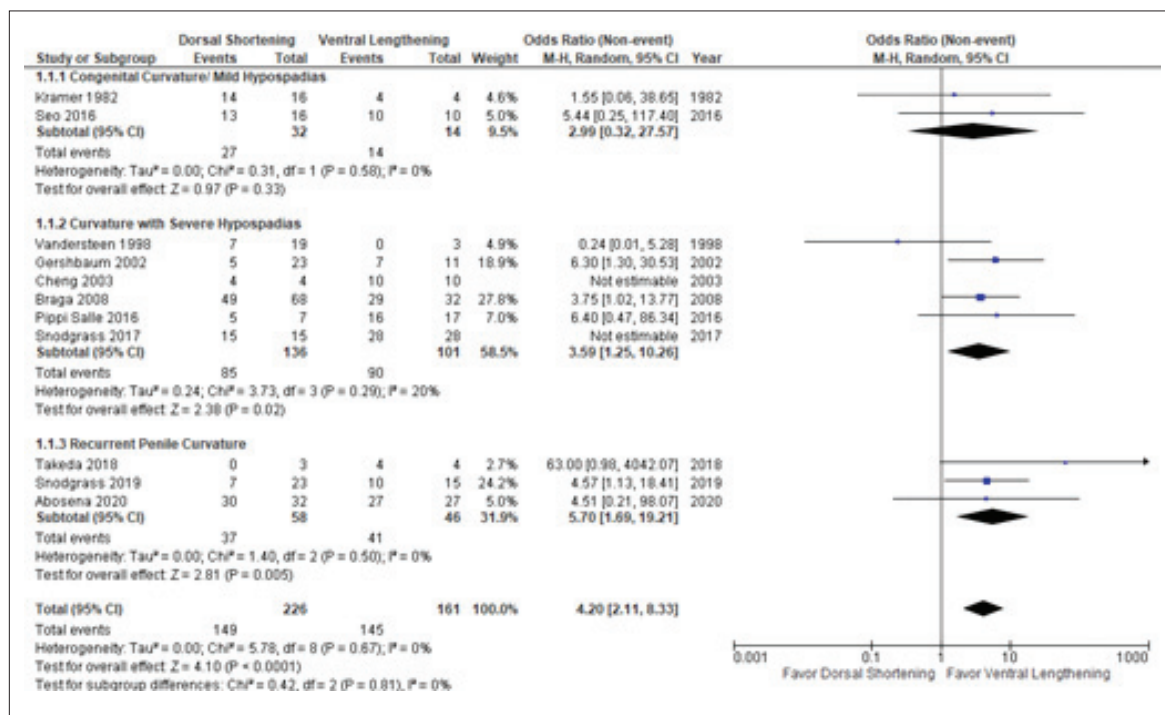
Dorsal plication is commonly used to correct congenital penile curvature in patients with and without



**Figure 1.** PRISMA 2020 flow diagram for new systematic reviews, which included searches of databases and registers only. Adapted from Page MJ, et al. *BMJ* 2021;372:n71. For more information, visit: <http://www.prisma-statement.org/>.

hypospadias due to its simplicity and minimal invasiveness.<sup>24</sup> Over the years, there have been various modifications to this technique.<sup>25</sup> Because of the resultant penile shortening and high risk of residual and/or recurrent curvature post-plication in patients with high-grade penile curvature, the approach of VL via corporotomies with and without graft/flap has gained some acceptance in recent decades;<sup>2,4</sup> however, the invasiveness of the VL has been widely studied and previous surveys have shown that most surgeons prefer dorsal plication to VL.<sup>24</sup>

This systematic review and meta-analysis synthesized evidence from the literature comparing DS and VL surgical outcomes for penile curvature correction. Concerning surgical outcomes, the pooled-effect estimates showed that VL had a higher success rate than DS in the correction of the penile curvature (65.9% vs. 90.0%, respectively; OR 4.20, 95% CI, 2.11, 8.33), while the composite complication rate was comparable to that of DS procedures (40.9 vs. 27.8%, respectively; OR 1.31, 95% CI, 0.46, 3.71). Our findings are consistent with those of another relevant review by Babu and Chandrasekharam, which also found that dorsal plication has a higher risk of recurrence than VL;<sup>26</sup> however, our subgroup analysis identifying the significant advantage of VL over DS was only noted for curva-



**Figure 2.** Forest plot of pooled effect estimates for outcome of curvature correction rate. Comparison: Dorsal shortening vs. ventral lengthening. Subgroup: Study population (congenital curvature/mild hypospadias/curvature with severe hypospadias/recurrent penile curvature). Statistical method: Cochran-Mantel-Haenszel method with random-effect model (odds ratio [OR] and 95% confidence interval [CI]).

ture associated with severe hypospadias and recurrent ventral curvatures. Among these subgroups — despite most of the bias of using DS for milder and VL for a more severe degree of curvature — VL still rendered a better correction rate.

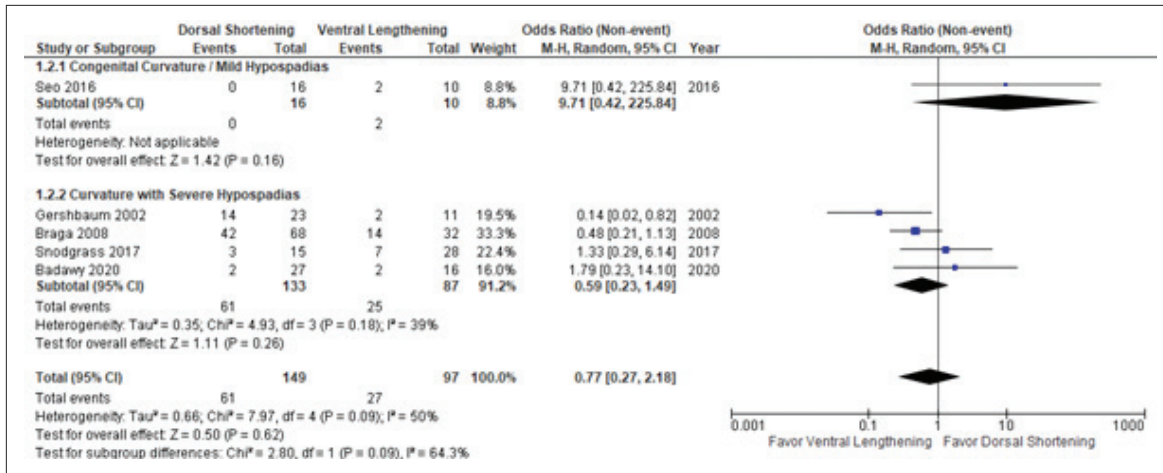
This systematic review’s literature search process was rooted in the scoping review by Yadav et al, which summarized all studies assessing techniques and comparative outcomes in managing pediatric penile curvature.<sup>27</sup> Our meta-analysis was generated from studies identified through a sensitive search strategy to capture all relevant studies on the topic, while restricting studies that reported both the DS and VL approaches and clustered their surgical outcomes accordingly. This enabled a direct-comparison meta-analysis to be conducted. In contrast, Babu and Chandrasekharam reported the prevalence of recurrent curvature for each surgical approach individually and then compared the overall outcome among the dorsal plication and VL groups, with most included studies reporting only one technique and not both.<sup>26</sup>

Despite the differences in our methodological approach, both meta-analyses identified similar issues among the available studies, including various outcome measurements and heterogeneity in surgical method-

ology and reporting. These have restricted the generalizability of the pooled-effect estimates, although our study addressed the heterogeneity of population characteristics using subgroup analysis, which improved inter-study variability. Despite the low inter-study variability and non-evident heterogeneity, we still considered the methodological differences among the included studies. Likewise, the subgroup analysis performed in this meta-analysis addresses the etiological differences of congenital ventral curvature without vs. with severe hypospadias vs. recurrent curvatures, thus giving the readers a better understanding of the effect differences of the contrasting intervention (DS vs. VL) in different etiologies of ventral curvatures in pediatric patients.

### Limitations

A significant limitation of this systematic review and meta-analysis is that the available literature included all retrospective studies with an inherent methodological constraint of uncontrolled confounders and measurement bias evident in the ROBINS-I assessment. Furthermore, the included studies describe various ventral lengthening procedure techniques. In addition, some have used different variable approaches within the study; hence, the downgrading of evidence certainty



**Figure 3.** Forest plot of pooled effect estimates for outcome of composite complication rate. Comparison: Dorsal shortening vs. ventral lengthening. Subgroup: Study population (congenital curvature/mild hypospadias/curvature with severe hypospadias). Statistical method: Cochran-Mantel-Haenszel method with random-effect model (odds ratio [OR] and 95% confidence interval [CI]).

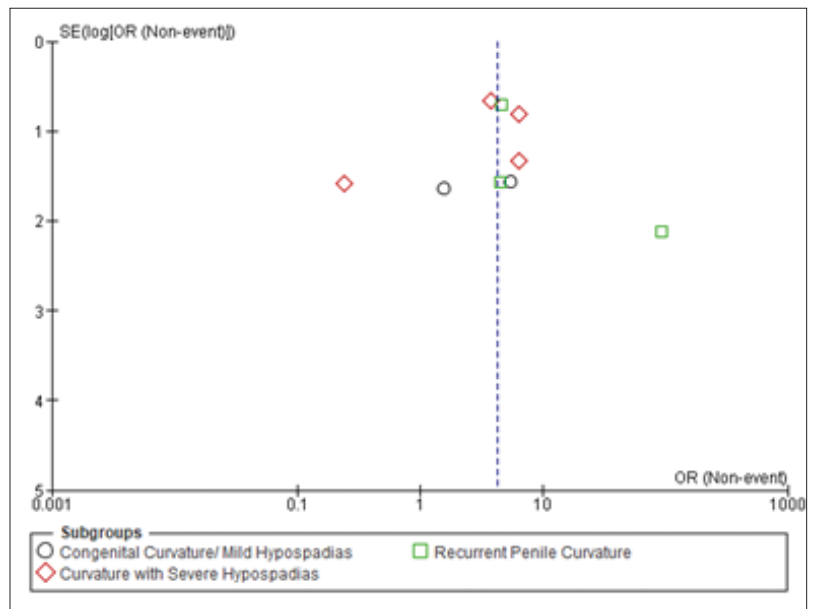
for indirectness. Despite these limitations, our review contributes to the literature by highlighting the available comparative outcome evidence to inform clinicians of the reported success rate and complications relevant to the procedures in managing penile curvature with or without severe hypospadias.

Another critical limitation related to the quality of the available studies included inconsistent measurements of the degree of curvature and a short followup period. In most reports, the surgical success of curvature correction was measured during the second-stage procedure and/or a short followup period of one year; only a few reported long-term followup recurrent/persistent curvature, which is clinically and functionally important.<sup>28</sup> Surgeons should standardize the measurement using a reliable method, such as the application of technology, to accurately assess the curvature before and after correction.<sup>29,30</sup> Furthermore, long-term followup is necessary since recurrent penile curvature after repair affects sexual function.<sup>12,31</sup>

Based on the GRADE criteria for non-randomized, comparative studies with a risk of bias downgrading, the certainty of the generated evidence was considered low to very low for recommending one approach over another, despite our study and that of Babu and Chandrasekharam similarly concluding that VL yields a better outcome. Carefully selecting the appropriate patient population for each approach remains the most crucial management aspect to balance risks and benefits.

**CONCLUSIONS**

In the management of selected cases of pediatric penile curvature with severe hypospadias and recurrent ven-



**Figure 4.** Funnel plot in assessing publication bias.

tral penile curvature, based on available evidence with low to very low certainty, VL procedures might render a modestly better success rate than DS. The surgical complication rates were comparable between the two approaches. Still, carefully selecting an appropriate patient population for each approach remains the most crucial management aspect to balance risks and benefits. Future studies should be conducted to determine long-term outcomes and standardize the reporting of penile curvature using reliable measurement methods.

COMPETING INTERESTS: The authors do not report any competing personal or financial interests related to this work.

This paper has been peer-reviewed.

## REFERENCES

- Snodgrass WT. Management of penile curvature in children. *Curr Opin Urol* 2008;18:431-5. <https://doi.org/10.1097/MOU.0b013e32830056d0>
- Castagnetti M, El-Ghoneimi A. Surgical management of primary severe hypospadias in children: An update focusing on penile curvature. *Nat Rev Urol* 2022;1-14. <https://doi.org/10.1038/s41585-021-00555-0>
- Cimador M, Vallasciani S, Manzoni G, et al. Failed hypospadias in pediatric patients. *Nat Rev Urol* 2013;10:657-66. <https://doi.org/10.1038/nrurol.2013.164>
- Castagnetti M, El-Ghoneimi A. Surgical management of primary severe hypospadias in children: Systematic 20-year review. *J Urol* 2010;184:1469-75. <https://doi.org/10.1016/j.juro.2010.06.044>
- Higgins JP, Thomas J, Chandler J, et al. Cochrane handbook for systematic reviews of interventions: John Wiley & Sons; 2019. <https://doi.org/10.1002/9781119536604>
- Moher D, Liberati A, Tetzlaff J, et al. Preferred reporting items for systematic reviews and meta-analyses: The PRISMA statement. *Ann Int Med* 2009;151:264-9. <https://doi.org/10.7326/0003-4819-151-4-200908180-00135>
- Shea BJ, Reeves BC, Wells G, et al. AMSTAR 2: A critical appraisal tool for systematic reviews that include randomized or non-randomized studies of healthcare interventions, or both. *BMJ* 2017;358. <https://doi.org/10.1136/bmj.i4008>
- Sterne JA, Hernán MA, Reeves BC, et al. ROBINS-I: A tool for assessing risk of bias in non-randomized studies of interventions. *BMJ* 2016;355. <https://doi.org/10.1136/bmj.i4919>
- Borenstein M, Hedges LV, Higgins JP, et al. A basic introduction to fixed-effect and random-effects models for meta-analysis. *Res Synth Method* 2010;1:97-111. <https://doi.org/10.1002/jsm.12>
- Sweeting MJ, Sutton AJ, Lambert PC. What to add to nothing? Use and avoidance of continuity corrections in meta-analysis of sparse data. *Stat Med* 2004;23:1351-75. <https://doi.org/10.1002/sim.1761>
- Schünemann HJ, Cuello C, Akl EA, et al. GRADE guidelines: 18. How ROBINS-I and other tools to assess risk of bias in nonrandomized studies should be used to rate the certainty of a body of evidence. *J Clin Epidemiol* 2019;111:105-14. <https://doi.org/10.1016/j.jclinepi.2018.01.012>
- Abosena W, Talab SS, Hanna MK. Recurrent chordee in 59 adolescents and young adults following childhood hypospadias repair. *J Ped Urol* 2020;16:162.e1-5. <https://doi.org/10.1016/j.jpurol.2019.11.013>
- Badawy H, Dawood W, Soliman AS, et al. Staged repair of proximal hypospadias: Reporting outcome of staged tubularized autograft repair (STAG). *J Ped Surg* 2020;55:2710-6. <https://doi.org/10.1016/j.jpedsurg.2020.07.023>
- Braga LH, Lorenzo AJ, Bägli DJ, et al. Ventral penile lengthening vs. dorsal plication for severe ventral curvature in children with proximal hypospadias. *J Urol* 2008;180:1743-8. <https://doi.org/10.1016/j.juro.2008.03.087>
- Cheng EY, Kropp BP, Pope JC, et al. Proximal division of the urethral plate in staged hypospadias repair. *J Urol* 2003;170:1580-4. <https://doi.org/10.1097/01.ju.0000084258.93064.f4>
- Gershbaum MD, Stock JA, Hanna MK. A case for 2-stage repair of perineoscrotal hypospadias with severe chordee. *J Urol* 2002;168:1727-8; discussion 9. [https://doi.org/10.1016/S0022-5347\(05\)64399-6](https://doi.org/10.1016/S0022-5347(05)64399-6)
- Kramer SA, Aybin G, Kelalis PP. Chordee without hypospadias in children. *J Urol* 1982;128:559-61. [https://doi.org/10.1016/S0022-5347\(17\)53045-1](https://doi.org/10.1016/S0022-5347(17)53045-1)
- Salle JP, Sayed S, Salle A, et al. Proximal hypospadias: A persistent challenge. Single-institution outcome analysis of three surgical techniques over a 10-year period. *J Ped Urol* 2016;12:28.e1-7. <https://doi.org/10.1016/j.jpurol.2015.06.011>
- Seo S, Ochi T, Yazaki Y, et al. Correction of penile ventral curvature in patients with minor or no hypospadias: A single surgeon's experience of 43 cases. *Ped Surg Int* 2016;32:975-9. <https://doi.org/10.1007/s00383-016-3950-x>
- Snodgrass W, Bush N. Staged tubularized autograft repair for primary proximal hypospadias with 30-degree or greater ventral curvature. *J Urol* 2017;198:680-6. <https://doi.org/10.1016/j.juro.2017.04.019>
- Snodgrass W, Bush N. Persistent or recurrent ventral curvature after failed proximal hypospadias repair. *J Ped Urol* 2019;15:344.e1-6. <https://doi.org/10.1016/j.jpurol.2019.03.028>
- Takeda M, Seo S, Sueyoshi R, et al. Reconstructive surgery for recurrent penile curvature. *Ped Surg Int* 2018;34:245-8. <https://doi.org/10.1007/s00383-017-4199-8>
- Vandersteen DR, Husmann DA. Late onset recurrent penile chordee after successful correction at hypospadias repair. *J Urol* 1998;160:1131-3. [https://doi.org/10.1016/S0022-5347\(01\)62716-2](https://doi.org/10.1016/S0022-5347(01)62716-2)
- Bologna RA, Noah TA, Nasrallah PF, et al. Chordee: Varied opinions and treatments as documented in a survey of the American Academy of Pediatrics, Section of Urology. *Urology* 1999;53:608-12. [https://doi.org/10.1016/S0090-4295\(98\)00656-6](https://doi.org/10.1016/S0090-4295(98)00656-6)
- Montag S, Palmer LS. Abnormalities of penile curvature: chordee and penile torsion. *Sci World J* 2011;11:1470-8. <https://doi.org/10.1100/tsw.2011.136>
- Babu R, Chandrasekharam V. A meta-analysis comparing dorsal plication and ventral lengthening for chordee correction during primary proximal hypospadias repair. *Ped Surg Int* 2022;1-10. <https://doi.org/10.1007/s00383-022-05065-7>
- Yadav P, Bobrowski A, Kim JK, et al. A scoping review of comparative studies on chordee correction in boys with congenital penile curvature and hypospadias. (Manuscript submitted for publication).
- Andersson M, Sjöström S, Doroszkiewicz M, et al. Urological results and patient satisfaction in adolescents after surgery for proximal hypospadias in childhood. *J Ped Urol* 2020;16:660.e1-8. <https://doi.org/10.1016/j.jpurol.2020.07.005>
- Mosa H, Paul A, Solomon E, et al. How accurate is eyeball measurement of curvature? A tool for hypospadias surgery. *J Ped Urol* 2022;18:47-6. <https://doi.org/10.1016/j.jpurol.2022.04.009>
- Fernandez N, Flórez-Valencia L, Prada JG, et al. Standardization of penile angle estimation with a semi-automated algorithm. *J Ped Urol* 2021;17:226.e1-6. <https://doi.org/10.1016/j.jpurol.2021.01.006>
- Husmann D. Erectile dysfunction in patients undergoing multiple attempts at hypospadias repair: Etiologies and concerns. *J Ped Urol* 2021;17:166.e1-7. <https://doi.org/10.1016/j.jpurol.2020.12.002>

CORRESPONDENCE: Dr. Michael Chua, Division of Urology, The Hospital for Sick Children, Toronto, ON, Canada; michael.chua@sickkids.ca