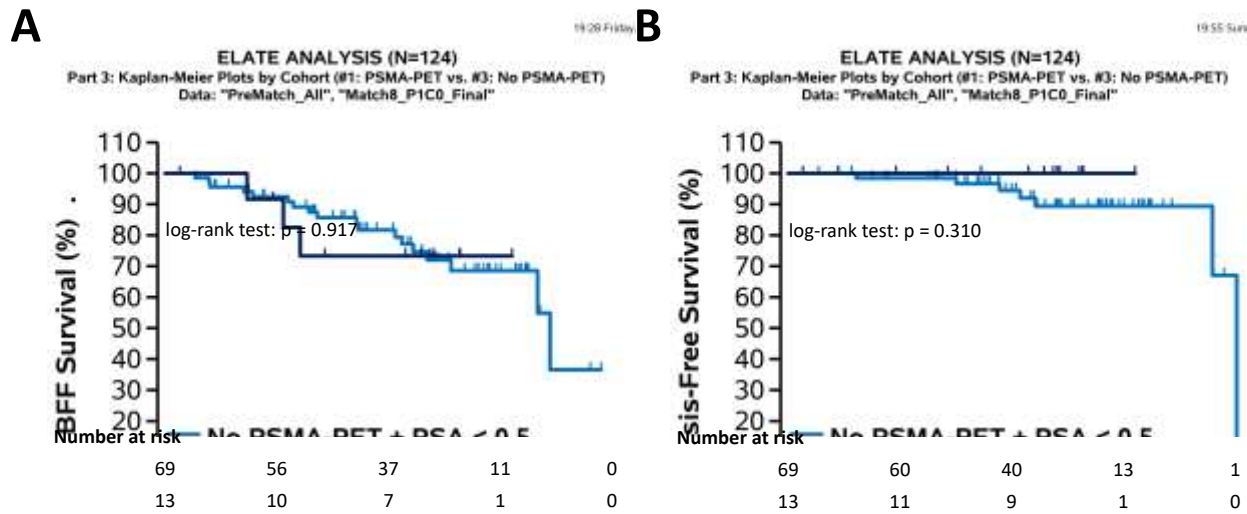


Arifin A, et al. ¹⁸F-DCFPyL PSMA-PET affects management of salvage radiotherapy for post-prostatectomy patients with biochemical failure: A matched cohort study

APPENDIX

Supplemental Figure 1. (A) Biochemical failure-free (BFF) survival and (B) metastasis-free survival of PSMA-PET patients with late salvage (pre-radiotherapy PSA 0.5–1.5 ng/mL) and non-PSMA-PET patients with early salvage (pre-radiotherapy PSA <0.5 ng/mL).



Arifin A, et al. ¹⁸F-DCFPyL PSMA-PET affects management of salvage radiotherapy for post-prostatectomy patients with biochemical failure: A matched cohort study

Supplementary Table 1. Summary of case-control matching scenarios.													
Characteristic	All patients	#1: PSA±0.5 CAPRA-S±1		#2: PSA±0.5 CAPRA-S±2		#3: PSA±0.5 CAPRA-S±3		#4: PSA±0.5 CAPRA-S group		#5: PSA±1.0 CAPRA-S±1		#6: PSA±1.0 CAPRA-S±2	
		Ratio 1:1	Ratio 1:2	Ratio 1:1	Ratio 1:2	Ratio 1:1	Ratio 1:2	Ratio 1:1	Ratio 1:2	Ratio 1:1	Ratio 1:2	Ratio 1:1	Ratio 1:2
PSMA-PET, n	44	31	23	32	25	34	27	31	22	34	25	36	27
No PSMA-PET, n	80	31	46	32	50	34	54	31	44	34	50	36	54
Pre-RT PSA, SD	0.460	0.755	0.671	0.514	0.537	0.481	0.553	0.655	0.832	0.455	0.771	0.523	0.638
Undetectable PSA, SD	0.200	0	0	0	0	0	0	0	0	0	0	0	0
CAPRA-S score, SD	0.228	0.139	0.025	0.097	0.011	0.058	0.019	0.161	0.027	0.138	0.011	0.146	0.039
CAPRA-S risk group, SD													
Low (0–2)	0.288	0.356	0.260	0.161	0.051	0.155	0.192	0	0	0.337	0.248	0.218	0.049
Intermediate (3–5)	0.253	0.465	0.310	0.317	0.161	0.359	0.300	0	0	0.485	0.283	0.397	0.186
High (6–12)	0.023	0.211	0.141	0.206	0.128	0.253	0.158	0	0	0.253	0.125	0.237	0.158
ADT, SD	0.308	0	0	0	0	0	0	0	0	0	0	0	0
Characteristic	All atients	#7: PSA±1.0 CAPRA-S±3		#8: PSA±1.0 CAPRA-S group		#9: PSA±1.5 CAPRA-S±1		#10: PSA±1.5 CAPRA-S±2		#11: PSA±1.5 CAPRA-S±3		#12: PSA±1.5 CAPRA-S group	
		Ratio 1:1	Ratio 1:2	Ratio 1:1	Ratio 1:2	Ratio 1:1	Ratio 1:2	Ratio 1:1	Ratio 1:2	Ratio 1:1	Ratio 1:2	Ratio: 1:1	Ratio: 1:2
PSMA-PET, n	44	37	27	34	24	35	27	36	29	36	30	35	24
No PSMA-PET, n	80	37	54	34	48	35	54	36	58	36	60	35	48
Pre-EBRT PSA, SD	0.460	0.336	0.654	0.115	0.738	0.560	0.731	0.577	0.623	0.282	0.666	0.224	0.778

Arifin A, et al. ¹⁸F-DCFPyL PSMA-PET affects management of salvage radiotherapy for post-prostatectomy patients with biochemical failure: A matched cohort study

Undetectable PSA, SD	0.200	0	0	0	0	0	0	0	0	0	0	0	0
CAPRA-S score, SD	0.228	0.136	0.009	0.170	0.071	0.154	0.010	0.132	0.102	0.157	0.016	0.195	0.082
CAPRA-S risk group, SD													
Low (0–2)	0.288	0.214	0.141	0	0	0.331	0.237	0.218	0.047	0.284	0.132	0	0
Intermediate (3–5)	0.253	0.444	0.262	0	0	0.470	0.338	0.397	0.314	0.457	0.306	0	0
High (6–12)	0.023	0.284	0.158	0	0	0.243	0.190	0.237	0.293	0.237	0.207	0	0
ADT, SD	0.308	0	0	0	0	0	0	0	0	0	0	0	0
Final match:				***									

ADT; androgen deprivation therapy. CAPRA-S: Cancer of the Prostate Risk Assessment Post-surgical; PET: positron emission tomography; PSA: prostate-specific antigen; PSMA: prostate-specific membrane antigen; RT: radiotherapy; SD: standardized difference.