

Performance characteristics of ^{18}F -fluciclovine positron emission tomography/computed tomography prior to retroperitoneal lymph node dissection

Solomon L. Woldu, MD¹; Xiaosong Meng, MD, PhD¹; Daniel Wong, BS²; Fady Baky, MD¹; Vitaly Margulis, MD¹; Yin Xi, PhD³; Rathan M. Subramaniam, MD, PhD, MPH^{3,4}; Aditya Bagrodia, MD^{1,5}

¹Department of Urology, UT Southwestern Medical Center, Dallas, TX, United States; ²School of Medicine, UT Southwestern Medical Center, Dallas, TX, United States; ³Department of Radiology, UT Southwestern Medical Center, Dallas, TX, United States; ⁴Simmons Comprehensive Cancer Center, UT Southwestern Medical Center, Dallas, TX, United States; ⁵Department of Urology, University of California-San Diego, San Diego, CA, United States

Cite as: Woldu SL, Meng X, Wong D, et al. Performance characteristics of ^{18}F -fluciclovine positron emission tomography/computed tomography prior to retroperitoneal lymph node dissection. *Can Urol Assoc J* 2022;16(3):E167-72. <http://dx.doi.org/10.5489/cuaj.7317>

Published online November 18, 2021

Abstract

Introduction: We aimed to determine whether anti-1-amino-3- ^{18}F -fluorocyclobutane-1-carboxylic acid (^{18}F -fluciclovine) positron emission tomography/computed tomography (PET/CT) can accurately detect residual non-seminomatous germ cell tumor (NSGCT) prior to retroperitoneal lymph node dissection (RPLND). There is no reliable way to differentiate between fibrosis/necrosis, teratoma, and viable germ cell tumor in patients receiving post-chemotherapy RPLND. Functional imaging, including ^{18}F -fludeoxyglucose (^{18}F -FDG) PET/CT, has been disappointing. Due to the need for better imaging modalities, our prospective, pilot study aims to investigate the accuracy of ^{18}F -fluciclovine PET/CT in detecting residual tumor prior to RPLND.

Methods: From March 2018 to May 2019, 10 eligible patients underwent preoperative ^{18}F -fluciclovine PET/CT prior to undergoing bilateral, full-template RPLND or excision of mass (for one re-do RPLND) in a prospective, phase 2 study. Correlation between ^{18}F -fluciclovine PET/CT and RPLND pathology were evaluated on a per-patient level.

Results: A total of 10 patients (mean age 29 ± 7.6 years) underwent ^{18}F -fluciclovine PET/CT prior to surgery. Nine of 10 patients received chemotherapy prior to RPLND. Correlation between ^{18}F -fluciclovine PET/CT and RPLND pathology was seen in 3/10 (30%) patients. Five of 10 patients (50%) with negative ^{18}F -fluciclovine PET/CT were found to have residual disease/teratoma on RPLND. Compared to the reference standard of RPLND, ^{18}F -fluciclovine PET/CT demonstrated 29% sensitivity and 33% specificity. No patients experienced any adverse events due to ^{18}F -fluciclovine PET/CT.

Conclusions: Despite a different mechanism of action from ^{18}F -FDG, ^{18}F -fluciclovine has low sensitivity and specificity for residual teratoma in the retroperitoneum.

Introduction

Testicular germ cell tumors (TGCT) represent the most common solid malignancy in young men and account for about 1% of cancers in men.¹ Many of the controversies regarding management of non-seminomatous germ cell tumors (NSGCT) stem from discrepancy between clinical staging and pathological staging and the fact that current imaging modalities are unable to accurately identify extratesticular disease or distinguish between post-chemotherapy necrosis/fibrosis vs. viable germ cell tumor and/or teratoma. Contrast-enhanced axial imaging computed tomography (CT) is the standard imaging modality to identify retroperitoneal lymph nodes.² Positive or suspicious retroperitoneal lymph nodes are defined by size cutoffs, for which there is no standard definition. A 1 cm cutpoint is commonly used but lacks sensitivity.³⁻⁵ From series reporting on failure of active surveillance, we can surmise that CT scans of the abdomen are under-staging patients in about 20–30% of cases.⁶ To improve on staging, metabolic imaging with the use of ^{18}F -fludeoxyglucose (^{18}F -FDG) positron emission tomography (PET)/CT has been investigated for NSGCT but has not been shown to be effective in this setting, as it is unable to distinguish between mature teratoma and necrosis/fibrosis due to little or no uptake of FDG with either histology.⁷⁻¹⁰ Due to these limitations, the National Comprehensive Cancer Network guidelines do not recommend the use of ^{18}F -FDG PET/CT either in the primary or the post-chemotherapy setting for NSGCT.

Given the significant need for new imaging modalities to improve management of NSGCT, both in the primary setting and in the post-chemotherapy setting to determine response to therapy, we designed a prospective study using anti-1-amino-3- ^{18}F -fluorocyclobutane-1-carboxylic acid, a synthetic radiolabeled leucine amino acid analog that is commonly referred to as ^{18}F -fluciclovine (AxuminTM,

Blue Earth Diagnostics, Ltd. Oxford, U.K.). This agent allows for cancer detection using mechanisms governing amino acid uptake, a process that is elevated in malignant tumors. In May 2016, ^{18}F -fluciclovine was FDA-approved for use with PET/CT in men with suspected prostate cancer recurrence.^{11,12} Given its different mechanism of action compared to FDG, we hypothesized that it might improve diagnostic accuracy in NSGCT, in particular its ability to distinguish teratoma from benign necrosis. Our prospective study aimed to investigate the accuracy of ^{18}F -fluciclovine PET/CT in detecting residual tumor and how this correlates with histopathological outcomes in patients with NSGCT undergoing primary or post-chemo retroperitoneal lymph node dissection (RPLND).

Methods

Study design and population

From March 2018 to May 2019, 16 patients were screened for enrollment in this prospective, phase 2 study after approval by the local institutional review board with informed consent and Health Insurance Portability and Accountability Act compliance. Study inclusion criteria included patients with histologically confirmed NSGCT after orchiectomy who were scheduled to undergo either primary RPLND, or NSGCT that was previously treated with cisplatin-based chemotherapy who were scheduled to undergo post-chemotherapy RPLND (*ClinicalTrials.gov* identifier: NCT03426865). Patients must have had measurable disease within their retroperitoneum. A total of 10 eligible patients were enrolled and underwent preoperative ^{18}F -fluciclovine PET/CT prior to undergoing retroperitoneal surgery (Fig. 1). Patients were excluded if they were under 18 years of age, had less than six months of life

expectancy, had poor performance status, liver failure, or known allergic or hypersensitivity reactions to previously administered radiopharmaceuticals of similar composition.

The experimental ^{18}F -fluciclovine PET/CT was required to be completed within 30 days prior to RPLND. A total of 10 patients underwent ^{18}F -fluciclovine PET/CT with a mean (standard deviation) of 7.3 ± 4.7 days prior to retroperitoneal surgery. Nine of 10 patients underwent RPLND after completion of chemotherapy, while one patient underwent primary RPLND. Of the nine patients who underwent PC-RPLND, seven had residual tumor after completion of chemotherapy and underwent ^{18}F -fluciclovine PET/CT a mean 55 days after chemotherapy. Two patients had late recurrence and underwent ^{18}F -fluciclovine PET/CT at 172 and 872 days after completion of chemotherapy. All patients had normal serum human chorionic gonadotropin (HCG) and alpha-fetoprotein (AFP) following completion of chemotherapy and/or prior to post-chemotherapy RPLND.

Labs and correlative radiology, as directed per clinical care, were required within 60 days prior to ^{18}F -fluciclovine PET/CT. ^{18}F -fluciclovine was administered with a 1–2-minute infusion for a mean dose of 10.7 ± 0.63 mCi. After approximately 3–5 minutes of uptake time, the patient was positioned supine in the PET/CT scanner for standard whole-body PET/CT scan from mid-thigh to skull base.

Surgeons were blinded to the results of ^{18}F -fluciclovine PET/CT scan prior to surgery to ensure no deviations from standard of care based on PET/CT results. Nine patients underwent bilateral full template RPLND with nerve-sparing when possible. In one case, re-operative retroperitoneal mass excision was performed following a prior RPLND at an outside institution. All radiographically visible extra-retroperitoneal sites of disease were resected when >1 cm.

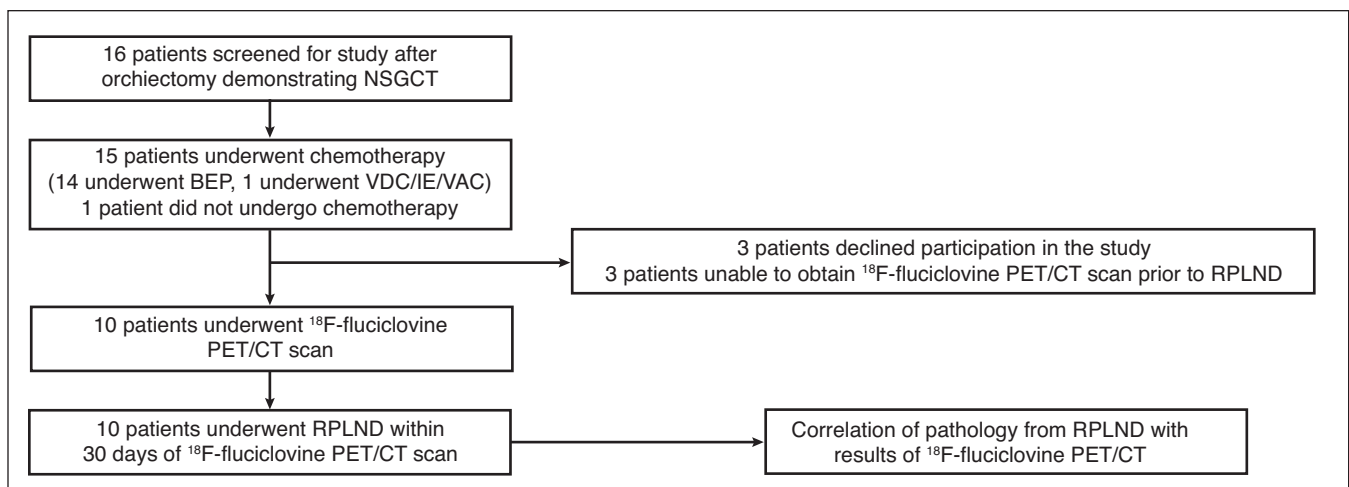


Fig. 1. Study flowchart. BEP: bleomycin, etoposide, platinum; CT: computed tomography; NSGCT: non-seminomatous germ cell tumor; PET: positron emission tomography; RPLND: retroperitoneal lymph node dissection; VDC/IE/VAC: vincristine/doxorubicin/cyclophosphamide.

Data analysis

¹⁸F-fluciclovine PET/CT images were interpreted as positive or negative by multiple board-certified radiologist and nuclear medicine physicians during the study. At the conclusion of the study, a single board-certified nuclear medicine physician with expertise in urological nuclear medicine who was blinded to the pathological results re-reviewed all 10 studies. In the absence of established interpretation criteria, for qualitative baseline assessment, focal ¹⁸F-fluciclovine uptake less than blood pool was considered negative and focal uptake more than bone marrow was considered positive. Repeat analysis of the data was also undertaken by considering regions of focal uptake more than blood pool (rather than bone marrow) to be considered sufficient for positivity.

For quantitative analysis purposes, the maximum standardized uptake value (SUV_{max}, representing the single voxel with the highest activity concentration) was determined using MimVista (version 6, Cleveland, OH, U.S.) analysis workstation for the ¹⁸F-fluciclovine PET/CT. The specimens were evaluated by four pathologists with subspecialty training in urological pathology. Correlation between ¹⁸F-fluciclovine PET/CT and RPLND pathology were evaluated on a per-patient level. In order to evaluate on a “per-packet” level, we aimed to send each lymph node packet separately to pathology; however, the post-chemotherapy tissue changes and residual masses made defining strict borders between lymph node packets impractical.

Results

The mean (interquartile range 25–75%) for retroperitoneal lesions SUV_{max} was 4.2 (3.0–3.7); blood pool SUV_{max} was 1.4 (1.2–1.6) and lumbar spine bone marrow SUV_{max} was 4.8 (4.2–5.8). Baseline patient characteristics are shown in Table 1. Nine of 10 patients had undergone prior chemotherapy, with one patient proceeding directly to surgery. The mean size of the largest retroperitoneal mass prior to RPLND was 3.6 cm (range 0.8–12.3). RPLND histology was negative for residual GCT or teratoma in three cases (30%), positive for teratoma in five cases (50%), positive for GCT (seminoma) in one cases (10%), and positive for embryonal rhabdomyosarcoma in one case (10%).

Diagnostic performance of ¹⁸F-fluciclovine PET/CT

Correlation between ¹⁸F-fluciclovine PET/CT and RPLND pathology was seen in 3 of 10 (30%) patients. Patients with correlation of retroperitoneal histology and ¹⁸F-fluciclovine consisted of: one patient with positive ¹⁸F-fluciclovine PET/CT and embryonal rhabdomyosarcoma detected on resection of the recurrent retroperitoneal mass; one patient with positive retroperitoneal and pelvic nodes with teratoma

Table 1. Patient characteristics

Characteristic	N=10
Age (yrs), mean (SD)	29 (7.6)
Tumor markers, median (IQR)	
Pre-orchietomy	
LDH (u/L)	300 (257–672)
AFP (µg/L)	34.5 (16.1–298.3)
HCG (u/L)	332.0 (22.5–2137.3)
Post-orchietomy	
LDH (u/L)	275 (166–474)
AFP (µg/L)	4.0 (2.4–5812.5)
HCG (u/L)	40 (6.5–1252.0)
Post-chemotherapy	
LDH (u/L)	167 (197–307)
AFP (µg/L)	4.4 (2.9–8.3)
HCG (u/L)	2.0 (2.0–2.0)
Post-RPLND	
LDH (u/L)	169 (160–195)
AFP (µg/L)	3.2 (1.3–4.1)
HCG (u/L)	2.0 (2.0–2.0)
Orchiectomy histology	
Patient #1	60% Embryonal sarcoma, 35% Choriocarcinoma, 5% Yolk sac
Patient #2	95% Embryonal rhabdomyosarcoma and PNET 5% seminoma
Patient #3	50% Embryonal carcinoma, 50% Teratoma
Patient #4	95% Seminoma, 5% Embryonal carcinoma
Patient #5	100% Intratubular seminoma
Patient #6	79% Embryonal carcinoma, 20% Yolk sac, 1% Choriocarcinoma
Patient #7	60% Seminoma, 30% Embryonal carcinoma, 9% Teratoma, 1% Yolk sac
Patient #8	60% Teratoma, 40% Yolk sac
Patient #9	75% Embryonal carcinoma, 20% Choriocarcinoma, 5% Yolk sac
Patient #10	40% Embryonal carcinoma, 30% Yolk sac, 1% Choriocarcinoma, 29% Teratoma
Clinical stage group, n (%)	
Stage I	2 (20)
Stage II	2 (20)
Stage III	6 (60)

AFP: alpha-fetoprotein; BEP: bleomycin, etoposide, platinum; HCG: beta human chorionic gonadotropin; IGCCCG: International Germ Cell Cancer Collaborative Group; IQR: interquartile range; LDH: lactic acid dehydrogenase; PET/CT: positron emission tomography/computed tomography; RPLND: retroperitoneal lymph node dissection; VDC/IE/VAC: vincristine/doxorubicin/cyclophosphamide.

Table 1 (cont'd). Patient characteristics

Characteristic	N=10
IGCCCG risk group, n (%)	
Good	6 (60)
Intermediate	3 (30)
Poor	1 (10)
Chemotherapy regimen, n (%)	
None	1 (10)
BEP	8 (80)
VDC	1 (10)
Positive preoperative ¹⁸ F-fluciclovine-PET/CT, n (%)	
No	7 (70)
Yes	3 (10)
Residual lesion histology, n (%)	
Necrosis and fibrosis	3 (30)
Teratoma	5 (50)
Seminoma	1 (10)
Embryonal rhabdomyosarcoma	1 (10)

AFP: alpha-fetoprotein; BEP: bleomycin, etoposide, platinum; HCG: beta human chorionic gonadotropin; IGCCCG: International Germ Cell Cancer Collaborative Group; IQR: interquartile range; LDH: lactic acid dehydrogenase; PET/CT: positron emission tomography/computed tomography; RPLND: retroperitoneal lymph node dissection; VDC/IE/VAC: vincristine/doxorubicin/cyclophosphamide.

on final pathology; and one patient with residual retroperitoneal masses on cross-sectional imaging with negative ¹⁸F-fluciclovine PET/CT and fibrosis in the final specimen, with no evidence of germ cell tumor or teratoma (Table 2). Five patients (50%) with negative ¹⁸F-fluciclovine PET/CT were found to have residual disease on RPLND, with one patient with seminoma and four with teratoma. Two

patients (20%) had positive ¹⁸F-fluciclovine PET/CT but only benign findings on final pathology. Compared to the reference standard of RPLND, ¹⁸F-fluciclovine PET/CT has 29% sensitivity, 33% specificity, positive predictive value of 50%, and negative predictive value of 17% in these 10 patients.

Repeat analysis of the ¹⁸F-fluciclovine PET/CT results using wider criteria for positive uptake, wherein regions of focal uptake more than blood pool (rather than bone marrow) are considered sufficient for positivity, improved correlation between retroperitoneal histology and ¹⁸F-fluciclovine (Fig. 2). Using this cutoff, there was an increase from four to eight positive ¹⁸F-fluciclovine PET/CT scans, with an additional patient with seminoma and three patients with teratoma detected, demonstrating a correlation of 7/10 (70%). Compared to the reference standard of RPLND, ¹⁸F-fluciclovine PET/CT with the wider cutoff demonstrates 86% sensitivity, 33% specificity, positive predictive value of 75%, and negative predictive value of 50% in these 10 patients.

Adverse events

No patients experience any adverse events as a direct result of undergoing an ¹⁸F-fluciclovine PET/CT.

Discussion

¹⁸F-fluciclovine is a novel radioactive diagnostic agent that is FDA-approved for use with PET/CT, with promising findings in men with suspected prostate cancer recurrence.^{11,12} Given the different mechanism of action compared to standard ¹⁸F-FDG PET/CT, we were hopeful that it may be able

Table 2. Correlation between ¹⁸F-fluciclovine PET/CT and pathology

Patient	Size of largest post-chemotherapy LN	¹⁸ F-fluciclovine PET/CT	Pathology	Correlation between PET/CT and pathology
Patient #1	4.3 cm para-aortic LN	Negative	2/5 LNs from left common iliac positive for teratoma	No
Patient #2*	12.3 cm right retroperitoneal mass	Positive – right retroperitoneal mass with peripheral tracer uptake	Right retroperitoneal mass positive for embryonal rhabdomyosarcoma	Yes
Patient #3	2.9 cm left para-aortic LN	Positive – multiple left sided retroperitoneal nodes and bilateral external iliac nodes	4/7 para-aortic LN positive for teratoma 4/13 inter-aortocaval LN positive for teratoma 1 spermatic cord node positive for teratoma	Yes
Patient #4	2.5 cm para-aortic LN	Positive – left para-aortic LN	All LN benign	No
Patient #5	2.1 cm aortocaval LN	Negative	All LN benign	Yes
Patient #6	1.6 cm left para-aortic LN	Negative	7/19 para- and pre-aortic LN positive for teratoma	No
Patient #7	8 mm aortocaval LN	Negative	1/16 Aortocaval LN positive for seminoma	No
Patient #8	3.4 cm para-aortic LN	Positive – right external iliac node	All LN benign	No
Patient #9	4.5 cm left para-aortic LN	Negative	4/9 Interaortocaval LN positive for teratoma 4/5 para-aortic LN positive for teratoma 1/1 right hilar LN positive for teratoma	No
Patient #10	2.3 cm aortocaval LN	Negative	1/8 Interaortocaval LN positive for teratoma	No

*This patient underwent RPLND two years prior with newly diagnosed recurrent right retroperitoneal mass. LN: lymph node; PET/CT: positron emission tomography/computed tomography; RPLND: retroperitoneal lymph node dissection.

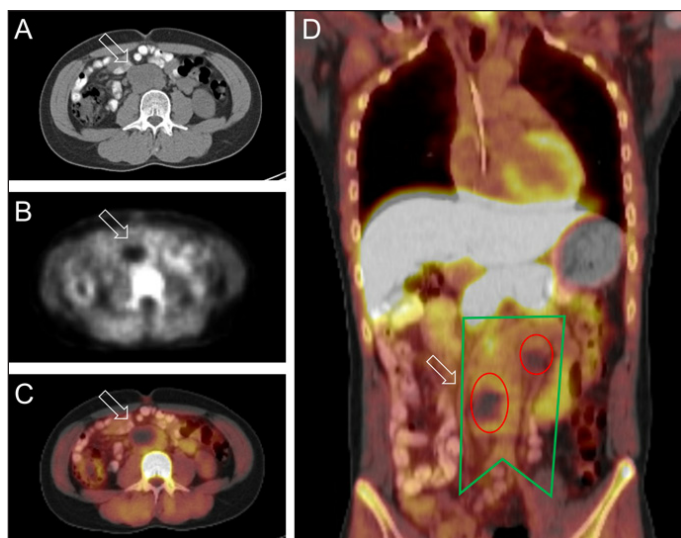


Fig. 2. Presence of teratoma in retroperitoneal masses with no anti- ^{18}F -FACBC uptake on PET/CT. **(A)** Axial CT demonstrating 3.4x3.4 cm aortocaval mass (arrow). **(B)** No fluciclovine uptake noted on PET. **(C)** Aortocaval lymph node shown on fused PET/CT with minimal uptake. **(D)** Coronal fused PET/CT demonstrating extent of bilateral template RPLND (green box) with viable teratoma in interaortocaval and para-aortic lymph node packets (red circles) on pathological examination.

to distinguish teratoma from benign necrosis. However, in our prospective study using ^{18}F -fluciclovine in patients with residual masses after chemotherapy prior to RPLND, there was poor sensitivity and specificity for detection of teratoma from fibrosis/necrosis in the retroperitoneum. While cure rates are generally high with chemotherapy alone, a significant portion of patients will have viable germ cell tumor left in their retroperitoneum and/or may have teratoma histology in the retroperitoneum that is chemotherapy-resistant.¹³ Similar to existing literature on the histology of residual mass following chemotherapy,^{14,15} our study found necrosis/fibrosis in 30%, residual GCT in 20%, and teratoma in 50% of the patients.

In contrast to FDG-PET, ^{18}F -fluciclovine PET uses a synthetic radiolabeled leucine amino acid analog to identify cells that have increased uptake of amino acids, a process generally seen in malignancy, given increased need for amino acids for protein synthesis and cell division.¹⁶ Therefore, radiolabeling of amino acids is a potentially useful imaging technique that may be more tumor-specific.¹⁷ In addition to the FDA-approved usage in men with suspected prostate cancer recurrence, it is currently being investigated in a number of different malignancies. Ulaner et al demonstrated that ^{18}F -fluciclovine PET/CT had excellent sensitivity by detecting locally advanced breast cancers and axillary nodal metastases.¹⁸ ^{18}F -fluciclovine had similar overall detection of disease as FDG but demonstrated different performance characteristics, suggesting that different properties were measured within the tumor. In a small phase 2a trial, Kondo et al examined the use of ^{18}F -fluciclovine in patients

with malignant glioma prior to brain tumor resection, a situation where FDG-PET/CT has limited sensitivity.^{19,20} The authors found that ^{18}F -fluciclovine identified tumors in all five patients and delineated wider regions of tumor extent, with two histopathologically confirmed tumors located in regions that were positive on ^{18}F -fluciclovine PET/CT but not on contrast-enhanced magnetic resonance imaging.¹⁹

In our prospective study of 10 patients, ^{18}F -fluciclovine PET/CT only had 29% sensitivity and 33% specificity, missing four patients with teratoma and one patient with residual GCT, and was falsely positive in two patients with only necrosis/fibrosis on final pathology using our study criteria for positive retroperitoneal pathology on imaging. However, 4/10 (40%) patients in the study with retroperitoneal pathology had mild uptake above blood pool levels but less than bone marrow levels. If these patients are considered positive on ^{18}F -fluciclovine PET/CT, the sensitivity improves to 86% without affecting specificity. As the existing threshold criteria for positivity were established using prostate cancer metastasis, adjusting the thresholds for testicular cancer may lead to improved ability to identify residual GCT and teratoma. This post-hoc analysis would need to be verified in a prospective manner. It should also be noted that one patient with positive ^{18}F -fluciclovine PET/CT after prior RPLND demonstrated embryonal rhabdomyosarcoma on resection of the recurrent retroperitoneal mass. Whether this is an isolated finding or a potential role for ^{18}F -fluciclovine PET/CT in recurrent disease needs further exploration. We were also able to demonstrate that ^{18}F -fluciclovine PET/CT was well-tolerated, with no adverse events attributable to the agents. Furthermore, no patients were delayed from undergoing RPLND as a result of undergoing ^{18}F -fluciclovine PET/CT.

The strength of this study includes the prospective clinical trial design, which decreases study biases. All patients were already scheduled for RPLND and the surgeons and pathologists were blinded to the results of the ^{18}F -fluciclovine PET/CT. The ^{18}F -fluciclovine PET/CT were re-reviewed by a single radiologist and a nuclear medicine physician who was blinded to the pathology findings. The study's obvious limitation is the small population, which affected our ability to adequately compare the characteristics of the two groups with positive and negative ^{18}F -fluciclovine PET/CTs.

Conclusions

Despite a different mechanism of action compared to ^{18}F -FDG PET/CT, ^{18}F -fluciclovine PET/CT also demonstrates poor sensitivity and specificity for teratoma. While further experience with this imaging modality for testis cancer may help improve performance characteristics, currently, it does not appear to be useful at helping guide further management of NSGCT in the post-chemotherapy setting.

Competing interests: Dr. Bagrodia reports non-financial support from Blue Earth Diagnostics for providing the ^{18}F -fluciclovine agent used in the trial, outside the submitted work. The remaining authors do not report any competing personal or financial interests related to this work.

This paper has been peer-reviewed.

References

1. Siegel RL, Miller KD, Jemal A. Cancer Statistics, 2018. *CA Cancer J Clin* 2018;68:7-30. <https://doi.org/10.3322/caac.21442>
2. Gilbert D, Rapley E, Shipley J. Testicular germ cell tumors: Predisposition genes and the male germ cell niche. *Nat Rev Cancer* 2011;11:278-88. <https://doi.org/10.1038/nrc3021>
3. Hilton S, Herr HW, Teicher JB, et al. CT detection of retroperitoneal lymph node metastases in patients with clinical stage I testicular non-seminomatous germ cell cancer: Assessment of size and distribution criteria. *AJR Am J Roentgenol* 1997;169:521-5. <https://doi.org/10.2214/ajr.169.2.9242768>
4. Leibovitch L, Foster RS, Kopecky KK, et al. Improved accuracy of computerized tomography based clinical staging in low stage non-seminomatous germ cell cancer using size criteria of retroperitoneal lymph nodes. *J Urol* 1995;154:1759-63. [https://doi.org/10.1016/S0022-5347\(01\)66778-8](https://doi.org/10.1016/S0022-5347(01)66778-8)
5. Stephenson AJ, Bosl GJ, Motzer RJ, et al. Retroperitoneal lymph node dissection for nonseminomatous germ cell testicular cancer: Impact of patient selection factors on outcome. *J Clin Oncol* 2005;23:2781-8. <https://doi.org/10.1200/JCO.2005.07.132>
6. Kollmannsberger C, Tandstad T, Bedard PL, et al. Patterns of relapse in patients with clinical stage I testicular cancer managed with active surveillance. *J Clin Oncol* 2015;33:51-7. <https://doi.org/10.1200/JCO.2014.56.2116>
7. De Santis M, Pont J. The role of positron emission tomography in germ cell cancer. *World J Urol* 2004;22:41-6. <https://doi.org/10.1007/s00345-004-0403-2>
8. Kollmannsberger C, Oechsle K, Dohmen BM, et al. Prospective comparison of ^{18}F fluorodeoxyglucose positron emission tomography with conventional assessment by computed tomography scans and serum tumor markers for the evaluation of residual masses in patients with non-seminomatous germ cell carcinoma. *Cancer* 2002;94:2353-62. <https://doi.org/10.1002/cncr.10494>
9. Nuutinen JM, Leskinen S, Elomaa I, et al. Detection of residual tumors in post-chemotherapy testicular cancer by FDG-PET. *Eur J Cancer* 1997;33:1234-41. [https://doi.org/10.1016/S0959-8049\(97\)00111-1](https://doi.org/10.1016/S0959-8049(97)00111-1)
10. Stephens AW, Gonin R, Hutchins GD, et al. Positron emission tomography evaluation of residual radiographic abnormalities in post-chemotherapy germ cell tumor patients. *J Clin Oncol* 1996;14:1637-41. <https://doi.org/10.1200/JCO.1996.14.5.1637>
11. Nanni C, Schiavino R, Brunocilla E, et al. ^{18}F -Fluciclovine PET/CT for the detection of prostate cancer relapse: A comparison to ^{11}C -Choline PET/CT. *Clin Nucl Med* 2015;40:e386-91. <https://doi.org/10.1097/RLU.0000000000000849>
12. Andriole GL, Kostakoglu L, Chau A, et al. The impact of positron emission tomography with ^{18}F -Fluciclovine on the treatment of biochemical recurrence of prostate cancer: Results from the LOCATE trial. *J Urol* 2019;201:322-31. <https://doi.org/10.1097/01.JU.0000556028.10817.8c>
13. Horwich A, Shipley J, Huddart R. Testicular germ-cell cancer. *Lancet* 2006;367:754-65. [https://doi.org/10.1016/S0140-6736\(06\)68305-0](https://doi.org/10.1016/S0140-6736(06)68305-0)
14. Donohue JP, Rowland RG, Kopecky K, et al. Correlation of computerized tomographic changes and histological findings in 80 patients having radical retroperitoneal lymph node dissection after chemotherapy for testis cancer. *J Urol* 1987;137:1176-9. [https://doi.org/10.1016/S0022-5347\(17\)44439-9](https://doi.org/10.1016/S0022-5347(17)44439-9)
15. Toner GC, Panicek DM, Heelan RT, et al. Adjuvantic surgery after chemotherapy for nonseminomatous germ cell tumors: Recommendations for patient selection. *J Clin Oncol* 1990;8:1683-94. <https://doi.org/10.1200/JCO.1990.8.10.1683>
16. Deykin D, Balko C, Isselbacher KJ. Sugar and amino acid transport by cells in culture — differences between normal and malignant cells. *N Engl J Med* 1972;286:929-33. <https://doi.org/10.1056/NEJM197204272861707>
17. Jager PL, Vaalburg W, Pruim J, et al. Radiolabeled amino acids: Basic aspects and clinical applications in oncology. *J Nucl Med* 2001;42:432-45. <http://jnm.snmjournals.org/cgi/pmidlookup?view=long&pmid=11337520>
18. Ulaner GA, Goldman DA, Gönen M, et al. Initial results of a prospective clinical trial of ^{18}F -Fluciclovine PET/CT in newly diagnosed invasive ductal and invasive lobular breast cancers. *J Nucl Med* 2016;57:1350-6. <https://doi.org/10.2967/jnumed.115.170456>
19. Kondo A, Ishii H, Aoki S, et al. Phase IIa clinical study of ^{18}F fluciclovine: Efficacy and safety of a new PET tracer for brain tumors. *Ann Nucl Med* 2016;30:608-18. <https://doi.org/10.1007/s12149-016-1102-y>
20. La Fougère C, Suchorska B, Bartenstein P, et al. Molecular imaging of gliomas with PET: Opportunities and limitations. *Neuro Oncol* 2011;13:806-19. <https://doi.org/10.1093/neuonc/nor054>

Correspondence: Dr. Aditya Bagrodia, Department of Urology, UT Southwestern Medical Center, Dallas, TX, United States; Aditya.bagrodia@utsouthwestern.edu