

**Abiraterone vs. docetaxel for metastatic hormone-sensitive prostate cancer:
A microsimulation model**

Amanda E. Hird, MD^{1,2}; Diana E. Magee, MD, MPH^{2,3}; Douglas C. Cheung, MD^{2,3};
Rano Matta, MD^{1,2}; Girish S. Kulkarni, MD, PhD, FRCSC^{2,3}; Robert K. Nam, MD, MSc,
FRCSC^{1,2}

¹Division of Urology, Sunnybrook Health Sciences Centre, Toronto, ON, Canada; ²Institute for Health Policy, Management, and Evaluation, University of Toronto, Toronto, ON, Canada; ³Division of Urology, Princess Margaret Hospital, University Health Network, Toronto, ON, Canada

Funding: Ajmera Family Chair in Urologic Oncology

Cite as: *Can Urol Assoc J* 2020 March 30; Epub ahead of print.
<http://dx.doi.org/10.5489/cuaj.6234>

Published online March 30, 2020

Abstract

Introduction: Our aim was to determine whether androgen-deprivation therapy (ADT) with abiraterone acetate (AA) or ADT with docetaxel chemotherapy (DC) resulted in improved quality-adjusted life years (QALYs) among men with de novo metastatic castration-sensitive prostate cancer (mCSPC) and the cost-effectiveness of the preferred strategy using decision analytic techniques.

Methods: A microsimulation model with a lifetime time horizon was constructed. Our primary outcome was QALYs. Secondary outcomes included cost, incremental cost-effectiveness ratio (ICER), unadjusted overall survival (OS), rates of second- and third-line therapy, and adverse events. A systematic literature review was used to generate probabilities and utilities to populate the model. The base case was a 65-year-old patient with de novo mCSPC.

Results: A total of 100 000 microsimulations were generated. Initial AA resulted in a gain of 0.45 QALYs compared to DC (3.36 vs. 2.91 QALYs) with an ICER of \$276 251.84 per QALY gained with initial AA therapy. Median crude OS was 51 months with AA and 48 months with DC. Overall, 46.6% and 42.6% of patients received second-line therapy and 8.7% and 7.9% patients received third-line therapy in the AA and DC groups, respectively. Grade 3/4 adverse events were experienced in 17.6% of patients receiving initial AA and 22.3% of patients receiving initial DC.

Conclusions: Although ADT with AA results in a gain in QALYs and crude OS compared to DC, AA therapy is not a cost-effective treatment strategy to apply uniformly to all patients. The availability of AA as a generic medication may help to close this gap. The ultimate choice should be based on patient and tumor factors.

Introduction

Prostate cancer is the most commonly diagnosed cancer among men in Canada and approximately 8% present with metastatic disease¹. Traditionally, androgen deprivation therapy (ADT) alone has been the initial treatment of choice in the setting of metastatic disease. However, recent well-conducted randomized controlled trials (RCTs) suggest that the addition of chemotherapy and non-steroidal anti-androgen agents improve survival outcomes when given to men with locally advanced or metastatic castrate sensitive disease²⁻⁴. Based on two high quality randomized trials (CHAARTED: docetaxel³ and LATITUDE: abiraterone acetate)⁵, we now have evidence for the utility of: 1) Chemotherapy with ADT; and 2) Anti-androgen therapy with ADT for castrate sensitive de-novo metastatic prostate cancer (mCSPC).

However, the two treatment pathways have not been compared head to head to determine which agent should be used first, and this issue remains controversial⁶. Given its associated toxicity, chemotherapy may be more advantageous to administer earlier on in the disease when the patients' performance status is, theoretically, at its highest. Initial chemotherapy does not preclude subsequent abiraterone use if castrate resistance develops and studies have shown benefit of anti-androgen therapy after chemotherapy among men with castrate resistant disease⁷. On the other hand, abiraterone acetate is easier to administer (oral pill) and has a lower associated toxicity profile when compared to chemotherapy⁸. Studies have shown its effectiveness prior to chemotherapy in men with castrate resistant disease⁹. However, abiraterone can induce neuroendocrine differentiation and although very rare, this disease transformation is associated with poor survival¹⁰. Furthermore, abiraterone therapy is associated with a significant increase in cost by more than \$100,000 CAD when used prior to chemotherapy¹¹.

In the absence of a direct comparative trial, the aim of this study was to develop a decision model to determine whether long-term ADT combined with upfront chemotherapy (docetaxel)(DC) or long-term ADT with upfront additional anti-androgen therapy (abiraterone acetate)(AA) results in improved quality adjusted life years (QALY) among adult men with mCSPC.

Methods

The model

We constructed a microsimulation model using TreeAgePro Healthcare 2018 (TreeAge Software Inc., Williamstown, MA) to compare treatment strategies for men with newly diagnosed mCSPC. Two management arms were modelled: 1) ADT with initial DC; and 2) ADT with initial AA and prednisone. Our primary outcome was QALY. Secondary outcomes included overall survival (OS), rates of use of second- and third-line therapy, and rates of adverse therapy-related events. If AA demonstrated superiority over DC with regards to QALY, an incremental cost effectiveness ratio (ICER) would be calculated to determine the incremental cost associated with a gain of one quality adjusted life year¹². This model was developed from a healthcare payer perspective with a lifetime time horizon. The Markov cycle length was three months to mimic the follow-up interval used in clinical practice for patients with metastatic prostate cancer. Within cycle correction with a 1.5% discount rate was used to account for bias arising from discrete-time Markov models^{13,14}.

Base case

The base case was a 65-year-old patient with de novo mCSPC who was a candidate for either DC or AA therapy. Modelled patients represented a cohort of patients with an Eastern Cooperative Oncology Group (ECOG) performance status of 0-2, with radiographic evidence of metastatic disease. This was in concordance with the randomized clinical trials whose data was used to populate this decision model^{3,5,8,15}.

Markov states

Our Markov diagram is presented in Figure 1. The base case patient could enter one of two initial treatment states: ADT with AA (and prednisone) or ADT with DC. Patients in the ADT with AA arm were modelled to receive continuous ADT with AA. Patients in the ADT with DC arm were modelled to receive continuous ADT with six cycles of DC (75mg/msq every 3 weeks for 6 cycles). In each state, patients could experience treatment-associated complications, treatment-related death, and disease progression, while accounting for the competing risk of other cause mortality. Costs and disutilities were populated based on values reported in the literature, adjusted for cycle length and were tolled as appropriate for one cycle length.

After each instance of disease progression, simulated patients could proceed with a subsequent line of therapy (second- or third- line therapy) or receive palliative care. Probabilities of proceeding to DC (if AA was received initially) and probability of proceeding to AA (if DC was received initially) were based on the rate of proceeding to an equivalent secondary therapy in randomized trials.

Assumptions

We assumed patients who did not experience an adverse event, death, or progression completed therapy without treatment interruptions or dose adjustments. We assumed patients who did not complete initial chemotherapy or at least three months of abiraterone did not derive any survival benefit from therapy and were modelled to proceed to second line therapy or palliative care. All patients who received DC initially received AA as second line therapy. Conversely, all patients who received AA initially, received DC as second line therapy. Third line therapy was modelled as proportion of patients receiving cabazitaxel and its associated costs and treatment toxicities.

Chemotherapy-related adverse events were defined as at least grade three and above with respect to severity using the Clavien-Dindo classification and the Common Terminology Criteria for Adverse Events. We assumed that there were no long-term treatment-related complications after the primary treatment phase (i.e. all utilities returned to baseline after the three-month treatment cycle). Although the cost of a hospital admission and emergency department visit was the same for patients on chemotherapy and abiraterone, the variability was modelled in the distribution of inpatient versus outpatient treatment of complications based on Phase IV Ontario-based population data¹⁶. The cost and distribution of hospitalizations and emergency department visits were not modified based on previous chemotherapy exposure as it has been shown that reasons for visits to hospital is similar between these two groups of patients¹⁶.

Data sources

A comprehensive MEDLINE literature search was completed to determine model probabilities and utilities. A manual search of the reference lists from our identified studies, meta-analyses, and review articles was performed to ensure important articles were not missed. With the presence of multiple randomized trials in this disease space, all with slightly different inclusion criteria and patient demographics, comparability between groups is paramount and must be carefully adjusted for in the analysis. Thus, in order to achieve balance between arms, weighted averages between trials were used. When incorporating progression rates among patients from the STAMPEDE trial⁸, rates among patients with metastatic disease were used. If there were multiple datapoints obtained for a given probability, we used a weighted-average approach to combine estimates. RCT data were preferentially used when available. Rates taken from time to event analyses were converted into quarterly probabilities assuming an exponential distribution (Table 1).

Utilities were obtained using the Tufts-New England Medical Center Cost Effectiveness Analysis registry (<http://www.tufts-nemc.org/cearegistry/data/default.asp>) and using a manual search of published urology decision models with a reference of 1 for perfect health and 0 for death (Table 2).

Disutilities are penalties applied to the baseline health state to reflect short term decreases in patients' quality of life. We applied transitional penalties to account for the inconvenience of

procedures and potential short-term complications. These penalties were subtracted from the given health state's baseline utility.

Cost data was obtained using a combination of published literature sources and using the Canadian Institute for Health Information (CIHI) Patient Cost Estimator (PCE) to estimate the average cost of hospital services nationally, by jurisdiction, and by patient age group (Table 3). The cost of a standard hospital stay is derived by the total inpatient costs divided by the total number of weighted cases within that jurisdiction. Canada-wide estimates were used and limited by age group (60-79 years of age) (<https://www.cihi.ca/en/patient-cost-estimator>).

Validation

Sensitivity analyses were completed for all variables across a range of plausible values and scenarios. The model was presented to content experts in modelling and urologic oncology to assess the face validity of our results. External validity was assessed by comparing outcomes from our model to published literature that was not used in the construction of our decision analysis.

Results

A total of 100,000 microsimulations were completed. Overall, 4.9% of patients in the AA group discontinued primary therapy due to adverse events compared to 13.7% of patients who received initial DC. From the AA group, 46.6% went onto receive subsequent DC and 8.7% received third line therapy. From the DC group, 42.6% went onto receive subsequent AA and 7.9% received third line therapy. Overall, 93.3% experienced a cancer-related death in the AA group compared to 94.2% in the DC group.

Survival outcomes

The AA pathway was preferred with an estimated survival of 3.36 quality adjusted life years (QALYs) versus 2.91 QALYs in the DC pathway (incremental gain of 0.45 QALYs with initial AA). Unadjusted median OS was 4.25 years (51 months) with initial AA versus 4.00 years (48 months) with initial DC. A survival curve at 60 months was generated (Figure 2) with a visible separation of curves at the 40-month mark in favour of initial AA.

Adverse events

Overall, 17.6% experienced AA-induced adverse events among patients receiving initial AA compared to 22.3% among simulated patients receiving initial DC. Overall, 0.5% experienced treatment-related death with initial DC versus 1% with initial AA.

Cost

Average cost of prostate cancer treatment was \$188,815.07 with initial AA therapy compared to \$64,501.75 with initial DC. This resulted in an ICER of \$276,251.84 per QALY (\$124,313.32/0.45 QALYs) gained with initial AA therapy.

Sensitivity analyses

One-way sensitivity analyses were completed on all variables as part of our model validation (Table 4). None of the thresholds that altered the treatment decision were reached, suggesting that initial AA is the preferred pathway. Similarly, tornado analysis demonstrated that the most sensitive variables were receiving second line therapy and adverse events although none were decision altering or reduced the ICER to below \$200,000/QALY (Figure 3).

Recently, AA has been approved for generic production. This was estimated to be \$2,370.09 per month based on pharmacy costing data. The model was re-run with this modified cost and generated an overall estimated cost of therapy of \$124,094.10 for patients receiving initial AA, corresponding to an ICER of \$149,022.09 per QALY gained. In order to contextualize different potential costs of AA (including current and projected generic costs), a deterministic sensitivity analysis comparing three-monthly costs of AA with their corresponding ICER is presented in Figure 4. To bring the willingness to pay (WTP) threshold (WTP per QALY gained) to less than \$100,000 CAD, the monthly cost of AA would have to be less than approximately \$1,750 CAD (or \$5,250 CAD over three months).

Validation: External

External validity was assessed by comparing event counts and time to events generated by the model to published series that were not included in its development. Cancer-related deaths occurred in 88% of patients treated with AA and 91% of patients treated with chemotherapy. This is consistent with the proportion of cancer-related deaths reported in the GETUG-AFU trial (82%, with cause of death unknown in 10% of the population)¹⁵. By setting probability of AA and DC therapy to zero (thus modeling survival with third line and palliative therapy only), estimated survival was 12 months, which is consistent with two recently published Phase III studies evaluating cabazitaxel in the post-DC setting^{17,18}. Furthermore, unadjusted OS for this cohort is similar to Phase IV population-level survival analyses after introduction of abiraterone and enzalutamide estimating an OS of 40 months among patients with mCRPC¹⁶ compared to 48-51 months in this study of patients with de-novo mCSPC. Overall cost of care for a patient with mCRPC was an estimated \$144,350 USD¹⁹, similar to what was estimated by our model analysis.

Discussion

We performed a decision analysis investigating initial ADT in combination with DC versus ADT in combination with AA for men with de-novo mCSPC. A total of 100,000 microsimulations were generated. Initial AA resulted in a gain of 0.45 QALYs compared to DC (3.36 versus 2.91 QALYs). Median crude OS was 51 months with AA and 48 months with DC. Graphically, 5-year overall survival with both therapies was similar (Figure 2) although survival for simulated patients in the initial AA group appeared to separate from the DC group around the 40-month mark in favour of AA. Average cost of prostate cancer treatment was \$188,815.07 with initial

AA therapy compared to \$64,501.75 with initial DC. Incremental cost effectiveness of AA over DC was \$276,251.84 per QALY gained. Sensitivity analysis estimating the ICER with the reduced cost of AA in Canada was \$149,022.09 per QALY gained.

The choice of either DC or AA with initial ADT therapy for men with de-novo mCSPC is based on two landmark clinical trials. The CHARTED trial showed that 6 cycles of single agent intravenous chemotherapy (docetaxel) with ADT significantly improved median overall survival by 13 months when given at the time of metastatic prostate cancer diagnosis compared to ADT alone (57.6 months versus 44.0 months, HR 0.61 [95%CI 0.47-0.80], $p < 0.001$)³. Subsequently, a double-blind placebo controlled randomized trial investigated the utility of abiraterone with ADT upfront in men with de novo mCSPC⁵. The LATITUDE study demonstrated a significant improvement in overall survival with upfront abiraterone with ADT compared to ADT alone (HR=0.62, 95% CI 0.51-0.76, $p < 0.001$)⁵. While both therapies have clearly established their effectiveness in this population^{3,5,8,15}, the optimal sequence to employing each therapy is not well defined.

Answering this clinical question using a randomized clinical trial would be expensive and difficult to perform. A recent network meta-analysis⁶ completed an indirect comparison of the two interventions using pooled data from five randomized trials^{3-5,8,15} and found a non-significant improvement in OS with AA (HR 0.84, 95%CI: 0.67-1.06). This method of analysis however fails to model downstream treatment pathways, including second- and third-line therapy as well as quality of life and cost parameters. Decision models, however, account for these factors and are an accepted tool to guide clinical decision making in the field of urologic oncology, including in prostate cancer²⁰ and recurrent high grade non-muscle invasive bladder cancer²¹. This model was built using randomized data and in the absence of a direct comparative trial provides the best guidance to date regarding optimal management of this patient population.

Traditionally, an accepted WTP threshold per QALY gained is approximately \$50,000 USD²². However, this threshold is somewhat arbitrary and may vary depending on the clinical and societal context²². One report stated that a WTP threshold of two to three times the per capita annual income (i.e. a U.S. threshold of \$110,000 to \$160,000 per QALY today) may be more appropriate²². Furthermore, a review on WTP thresholds for oncology drugs reported that they were often in the range of \$100,000 to \$150,000 per QALY gained²³. A review of ICERs that influence government recommendations regarding cancer screening initiatives revealed that an ICER value of \$61,600 USD per QALY yielded a high sensitivity of 90% and specificity of 85% for a positive recommendation²⁴. The present study revealed a WTP threshold of \$276,251.84 CAD per QALY gained with initial AA and ADT compared with DC and ADT. This is outside of the accepted WTP threshold suggesting that although AA demonstrates some survival benefits, it is not cost-effective. As demonstrated in Figure 4, the future availability of generic AA and the potential equivalence of 250 mg per day dosing when combined with a low-fat meal may further increase the potential cost savings associated with AA²⁵. This may facilitate reaching

a more economically feasible ICER to enable integration of this agent earlier in the disease trajectory into an economically constrained system (although it remains at the upper limits of cost-effectiveness).

Alternatively, identifying which patients derive the most benefit from initial AA may help to guide treatment selection. While no effectiveness thresholds were crossed for the model probabilities within their respective plausible clinical ranges (Table 4, Figure 3), the probabilities that came closest were those pertaining to likelihood of second line therapy. Phase IV population-level evidence analyzing rates of second line therapy after DC and AA may be used in the future to guide treatment selection. While there may be difference between the preferred agent based on disease-specific and demographic subgroups, unfortunately, we were not able to model this in the current study given that progression-free survival rates stratified by specific high-risk criteria (for example, presence or absence of visceral metastasis, high versus low volume disease), were reported by some⁵, but not all trials^{3,8}. Therefore, this represents a pragmatic analysis that can be applied to a broad group of patients. There are limitations to the current study. The probabilities used to generate this model were largely taken from randomized patient data therefore may not be representative of all patients presenting with de-novo mCSPC. Inclusion criteria and patient demographics were slightly different between trials; however, we attempted to achieve similarity between groups by using weighted averages for progression outcomes for the AA and DC trials. Furthermore, the included studies used slightly differing definitions of progression. Specifically, the placebo-controlled LATITUDE trial reported radiographic progression free survival whereas CHARTED defined time to progression as radiographic or metastatic symptom progression-free survival, which may impact trial comparability. In addition, while AA was the first non-steroidal anti-androgen agent to have published level 1 clinical trial evidence supporting its use in the setting of mCSPC, the utility of other agents (such as enzalutamide, darolutamide, or apalutamide) may impact the anticipated efficacy and incremental cost. The ENZAMET²⁶ trial and anticipated ARCHES²⁷ trial investigate enzalutamide while the TITAN²⁸ trial compares apalutamide to placebo in the setting of mCSPC. A decision analysis comparing AA and enzalutamide in the setting of metastatic castrate resistant prostate cancer suggested that enzalutamide was a more cost-effective option²⁹. Although beyond the scope of this project, comparison of AA to enzalutamide and to apalutamide in the setting of mCSPC is warranted. Lastly, the proportion of patients receiving second line therapy is reflective of the numbers directly reported in clinical trials and may not be representative of what is seen in clinical practice.

The strengths of this study include the use of best practice modeling techniques that realistically depict the disease and surveillance pathways for this population. The model accurately portrays the follow-up and surveillance patterns used in clinical practice, which increases the model's generalizability. Furthermore, we were able to model many simulated patients and our results were found to be both internally and externally valid. Specific rates of

AA-related complications were adapted from Ontario-based Phase IV population level data and the cost of such complications were adapted from systemic therapy-related adverse events averaged across all primary cancer sites. Cost of therapy data was directly derived from published Canadian literature.

Conclusions

While AA resulted in a marginal increase in QALYs gained over DC when combined with ADT as initial therapy in men with de-novo mCSPC, this study shows that this gain is not cost effective with an estimated WTP threshold over \$270,000 CAD. The price of generic AA and the potential use of reduced dose AA may alter the treatment landscape in favor of novel anti-androgen agents in the future. The utility of other non-steroidal anti-androgen agents in this setting with differing cost and side effect profiles may also alter treatment selection.

DRAFT

References

1. Dall'Era MA, deVere-White R, Rodriguez D, et al. Changing Incidence of Metastatic Prostate Cancer by Race and Age, 1988-2015. *Eur Urol Focus*. 2018.
2. Cornford P, Bellmunt J, Bolla M, et al. EAU-ESTRO-SIOG Guidelines on Prostate Cancer. Part II: Treatment of Relapsing, Metastatic, and Castration-Resistant Prostate Cancer. *Eur Urol*. 2017;71(4):630-642.
3. Sweeney CJ, Chen YH, Carducci M, et al. Chemohormonal Therapy in Metastatic Hormone-Sensitive Prostate Cancer. *N Engl J Med*. 2015;373(8):737-746.
4. James ND, Sydes MR, Clarke NW, et al. Addition of docetaxel, zoledronic acid, or both to first-line long-term hormone therapy in prostate cancer (STAMPEDE): survival results from an adaptive, multiarm, multistage, platform randomised controlled trial. *Lancet*. 2016;387(10024):1163-1177.
5. Fizazi K, Tran N, Fein L, et al. Abiraterone plus Prednisone in Metastatic, Castration-Sensitive Prostate Cancer. *N Engl J Med*. 2017;377(4):352-360.
6. Wallis CJD, Klaassen Z, Bhindi B, et al. Comparison of Abiraterone Acetate and Docetaxel with Androgen Deprivation Therapy in High-risk and Metastatic Hormone-naïve Prostate Cancer: A Systematic Review and Network Meta-analysis. *Eur Urol*. 2018;73(6):834-844.
7. Scher HI, Fizazi K, Saad F, et al. Increased survival with enzalutamide in prostate cancer after chemotherapy. *N Engl J Med*. 2012;367(13):1187-1197.
8. James ND, de Bono JS, Spears MR, et al. Abiraterone for Prostate Cancer Not Previously Treated with Hormone Therapy. *N Engl J Med*. 2017;377(4):338-351.
9. Beer TM, Armstrong AJ, Rathkopf DE, et al. Enzalutamide in metastatic prostate cancer before chemotherapy. *N Engl J Med*. 2014;371(5):424-433.
10. Heck MM, Thaler MA, Schmid SC, et al. Chromogranin A and neurone-specific enolase serum levels as predictors of treatment outcome in patients with metastatic castration-resistant prostate cancer undergoing abiraterone therapy. *BJU Int*. 2017;119(1):30-37.
11. Dragomir A, Dinea D, Vanhuyse M, et al. Drug costs in the management of metastatic castration-resistant prostate cancer in Canada. *BMC Health Serv Res*. 2014;14:252.
12. Detsky AS, Naglie IG. A clinician's guide to cost-effectiveness analysis. *Ann Intern Med*. 1990;113(2):147-154.
13. Naimark DM, Bott M, Krahn M. The half-cycle correction explained: two alternative pedagogical approaches. *Med Decis Making*. 2008;28(5):706-712.
14. CADTH. Guidelines for the Economic Evaluation of Health Technologies. 4th edition ed. Canadian Agency for Drugs and Technologies in Health, 2017.
15. Gravis G, Fizazi K, Joly F, et al. Androgen-deprivation therapy alone or with docetaxel in non-castrate metastatic prostate cancer (GETUG-AFU 15): a randomised, open-label, phase 3 trial. *Lancet Oncol*. 2013;14(2):149-158.
16. Wallis CJD, Satkunasivam R, Saskin R, et al. Population-based Analysis of Treatment Toxicity Among Men With Castration-resistant Prostate Cancer: A Phase IV Study. *Urology*. 2018;113:138-145.

17. Eisenberger M, Hardy-Bessard AC, Kim CS, et al. Phase III Study Comparing a Reduced Dose of Cabazitaxel (20 mg/m. *J Clin Oncol.* 2017;35(28):3198-3206.
18. Beer TM, Hotte SJ, Saad F, et al. Custirsen (OGX-011) combined with cabazitaxel and prednisone versus cabazitaxel and prednisone alone in patients with metastatic castration-resistant prostate cancer previously treated with docetaxel (AFFINITY): a randomised, open-label, international, phase 3 trial. *Lancet Oncol.* 2017;18(11):1532-1542.
19. Wu B, Li S, Tunceli O, et al. Cost of care for patients with metastatic castrate resistant prostate cancer initiating on docetaxel versus oral targeted therapies in the United States Vol 36: *Journal of Clinical Oncology*; 2018:Suppl 88.
20. Wallis CJD, Morton G, Jerath A, et al. Adjuvant Versus Salvage Radiotherapy for Patients With Adverse Pathological Findings Following Radical Prostatectomy: A Decision Analysis. *MDM Policy Pract.* 2017;2(1):2381468317709476.
21. Kulkarni GS, Finelli A, Fleshner NE, et al. Optimal management of high-risk T1G3 bladder cancer: a decision analysis. *PLoS Med.* 2007;4(9):e284.
22. Neumann PJ, Cohen JT, Weinstein MC. Updating cost-effectiveness--the curious resilience of the \$50,000-per-QALY threshold. *N Engl J Med.* 2014;371(9):796-797.
23. Bae YH, Mullins CD. Do value thresholds for oncology drugs differ from nononcology drugs? *J Manag Care Spec Pharm.* 2014;20(11):1086-1092.
24. Wong CK, Lang BH, Guo VY, et al. Possible Impact of Incremental Cost-Effectiveness Ratio (ICER) on Decision Making for Cancer Screening in Hong Kong: A Systematic Review. *Appl Health Econ Health Policy.* 2016;14(6):647-657.
25. Klaassen Z, Wallis CJD, Fleshner NE. Abiraterone Acetate for Nonmetastatic Castration-Resistant Prostate Cancer-The Forgotten Dance Partner? *JAMA Oncol.* 2019;5(2):144-145.
26. Davis ID, Martin AJ, Stockler MR, et al. Enzalutamide with Standard First-Line Therapy in Metastatic Prostate Cancer. *N Engl J Med.* 2019;381(2):121-131.
27. Astellas. A study of enzalutamide plus androgen deprivation therapy (ADT) versus placebo plus ADT in patients with metastatic hormone sensitive prostate cancer (mHSPC) (ARCHES). 2019.
28. Chi KN, Agarwal N, Bjartell A, et al. Apalutamide for Metastatic, Castration-Sensitive Prostate Cancer. *N Engl J Med.* 2019;381(1):13-24.
29. Vicente C, Loblaw A, North S, et al. Cost-utility analysis of enzalutamide for patients with chemotherapy-naïve metastatic castration-resistant prostate cancer after failure of androgen deprivation therapy. *Value in Health.* 2015;18(7):A474.
30. Gravis G, Boher JM, Joly F, et al. Androgen Deprivation Therapy (ADT) Plus Docetaxel Versus ADT Alone in Metastatic Non castrate Prostate Cancer: Impact of Metastatic Burden and Long-term Survival Analysis of the Randomized Phase 3 GETUG-AFU15 Trial. *Eur Urol.* 2016;70(2):256-262.
31. Cicero G, De Luca R, Blasi L, et al. Treatment with abiraterone in metastatic castration-resistant prostate cancer patients progressing after docetaxel: a retrospective study. *Anticancer Drugs.* 2017;28(9):1047-1052.

32. Petrioli R, Francini E, Laera L, et al. Role of chemotherapy in the treatment of metastatic castration-resistant prostate cancer patients who have progressed after abiraterone acetate. *Cancer Chemother Pharmacol*. 2015;76(3):439-445.
33. Azad AA, Leibowitz-Amit R, Eigl BJ, et al. A retrospective, Canadian multi-center study examining the impact of prior response to abiraterone acetate on efficacy of docetaxel in metastatic castration-resistant prostate cancer. *Prostate*. 2014;74(15):1544-1550.
34. Mezynski J, Pezaro C, Bianchini D, et al. Antitumour activity of docetaxel following treatment with the CYP17A1 inhibitor abiraterone: clinical evidence for cross-resistance? *Ann Oncol*. 2012;23(11):2943-2947.
35. Suzman DL, Lubner B, Schweizer MT, et al. Clinical activity of enzalutamide versus docetaxel in men with castration-resistant prostate cancer progressing after abiraterone. *Prostate*. 2014;74(13):1278-1285.
36. de Bono JS, Smith MR, Saad F, et al. Subsequent Chemotherapy and Treatment Patterns After Abiraterone Acetate in Patients with Metastatic Castration-resistant Prostate Cancer: Post Hoc Analysis of COU-AA-302. *Eur Urol*. 2017;71(4):656-664.
37. Fizazi K, Scher HI, Molina A, et al. Abiraterone acetate for treatment of metastatic castration-resistant prostate cancer: final overall survival analysis of the COU-AA-301 randomised, double-blind, placebo-controlled phase 3 study. *Lancet Oncol*. 2012;13(10):983-992.
38. Oudard S, Fizazi K, Sengeløv L, et al. Cabazitaxel Versus Docetaxel As First-Line Therapy for Patients With Metastatic Castration-Resistant Prostate Cancer: A Randomized Phase III Trial-FIRSTANA. *J Clin Oncol*. 2017;35(28):3189-3197.
39. de Bono JS, Oudard S, Ozguroglu M, et al. Prednisone plus cabazitaxel or mitoxantrone for metastatic castration-resistant prostate cancer progressing after docetaxel treatment: a randomised open-label trial. *Lancet*. 2010;376(9747):1147-1154.
40. Bracarda S, Gernone A, Gasparro D, et al. Real-world cabazitaxel safety: the Italian early-access program in metastatic castration-resistant prostate cancer. *Future Oncol*. 2014;10(6):975-983.
41. Saad F, Winquist E, Hubay S, et al. Efficacy, quality of life, and safety of cabazitaxel in Canadian metastatic castration-resistant prostate cancer patients treated or not with prior abiraterone. *Can Urol Assoc J*. 2016;10(3-4):102-109.
42. Al Nakouzi N, Le Moulec S, Albigès L, et al. Cabazitaxel Remains Active in Patients Progressing After Docetaxel Followed by Novel Androgen Receptor Pathway Targeted Therapies. *Eur Urol*. 2015;68(2):228-235.
43. Wissing MD, Coenen JL, van den Berg P, et al. CAST: A retrospective analysis of cabazitaxel and abiraterone acetate sequential treatment in patients with metastatic castrate-resistant prostate cancer previously treated with docetaxel. *Int J Cancer*. 2015;136(6):E760-772.
44. Sonpavde G, Bhor M, Hennessy D, et al. Sequencing of Cabazitaxel and Abiraterone Acetate After Docetaxel in Metastatic Castration-Resistant Prostate Cancer: Treatment Patterns and Clinical Outcomes in Multicenter Community-Based US Oncology Practices. *Clin Genitourin Cancer*. 2015;13(4):309-318.

45. Caffo O, De Giorgi U, Fratino L, et al. Clinical Outcomes of Castration-resistant Prostate Cancer Treatments Administered as Third or Fourth Line Following Failure of Docetaxel and Other Second-line Treatment: Results of an Italian Multicentre Study. *Eur Urol.* 2015;68(1):147-153.
46. Pezaro CJ, Omlin AG, Altavilla A, et al. Activity of cabazitaxel in castration-resistant prostate cancer progressing after docetaxel and next-generation endocrine agents. *Eur Urol.* 2014;66(3):459-465.
47. Krishnan MS, Epstein-Peterson Z, Chen YH, et al. Predicting life expectancy in patients with metastatic cancer receiving palliative radiotherapy: the TEACHH model. *Cancer.* 2014;120(1):134-141.
48. Krahn M, Ritvo P, Irvine J, et al. Patient and community preferences for outcomes in prostate cancer: implications for clinical policy. *Med Care.* 2003;41(1):153-164.
49. Stewart ST, Lenert L, Bhatnagar V, et al. Utilities for prostate cancer health states in men aged 60 and older. *Med Care.* 2005;43(4):347-355.
50. Collins R, Fenwick E, Trowman R, et al. A systematic review and economic model of the clinical effectiveness and cost-effectiveness of docetaxel in combination with prednisone or prednisolone for the treatment of hormone-refractory metastatic prostate cancer. *Health Technol Assess.* 2007;11(2):iii-iv, xv-xviii, 1-179.
51. Volk RJ, Cantor SB, Cass AR, et al. Preferences of husbands and wives for outcomes of prostate cancer screening and treatment. *J Gen Intern Med.* 2004;19(4):339-348.
52. Hall F, de Freitas HM, Kerr C, et al. Estimating utilities/disutilities for high-risk metastatic hormone-sensitive prostate cancer (mHSPC) and treatment-related adverse events. *Qual Life Res.* 2019.
53. Sanyal C, Aprikian AG, Cury FL, et al. Management of localized and advanced prostate cancer in Canada: A lifetime cost and quality-adjusted life-year analysis. *Cancer.* 2016;122(7):1085-1096.
54. Yong JH, Beca J, McGowan T, et al. Cost-effectiveness of intensity-modulated radiotherapy in prostate cancer. *Clin Oncol (R Coll Radiol).* 2012;24(7):521-531.
55. Lloyd AJ, Kerr C, Penton J, et al. Health-Related Quality of Life and Health Utilities in Metastatic Castrate-Resistant Prostate Cancer: A Survey Capturing Experiences from a Diverse Sample of UK Patients. *Value Health.* 2015;18(8):1152-1157.
56. Sandblom G, Carlsson P, Sennfält K, et al. A population-based study of pain and quality of life during the year before death in men with prostate cancer. *Br J Cancer.* 2004;90(6):1163-1168.
57. Krahn MD, Bremner KE, Zagorski B, et al. Health care costs for state transition models in prostate cancer. *Med Decis Making.* 2014;34(3):366-378.

Figures and Tables

Fig. 1. State transition diagram. Second-line therapy after abiraterone: docetaxel; Second-line therapy after docetaxel: abiraterone; third-line therapy: cabazitaxel. Markov cycle length: 3 months. ADT: androgen-deprivation therapy.

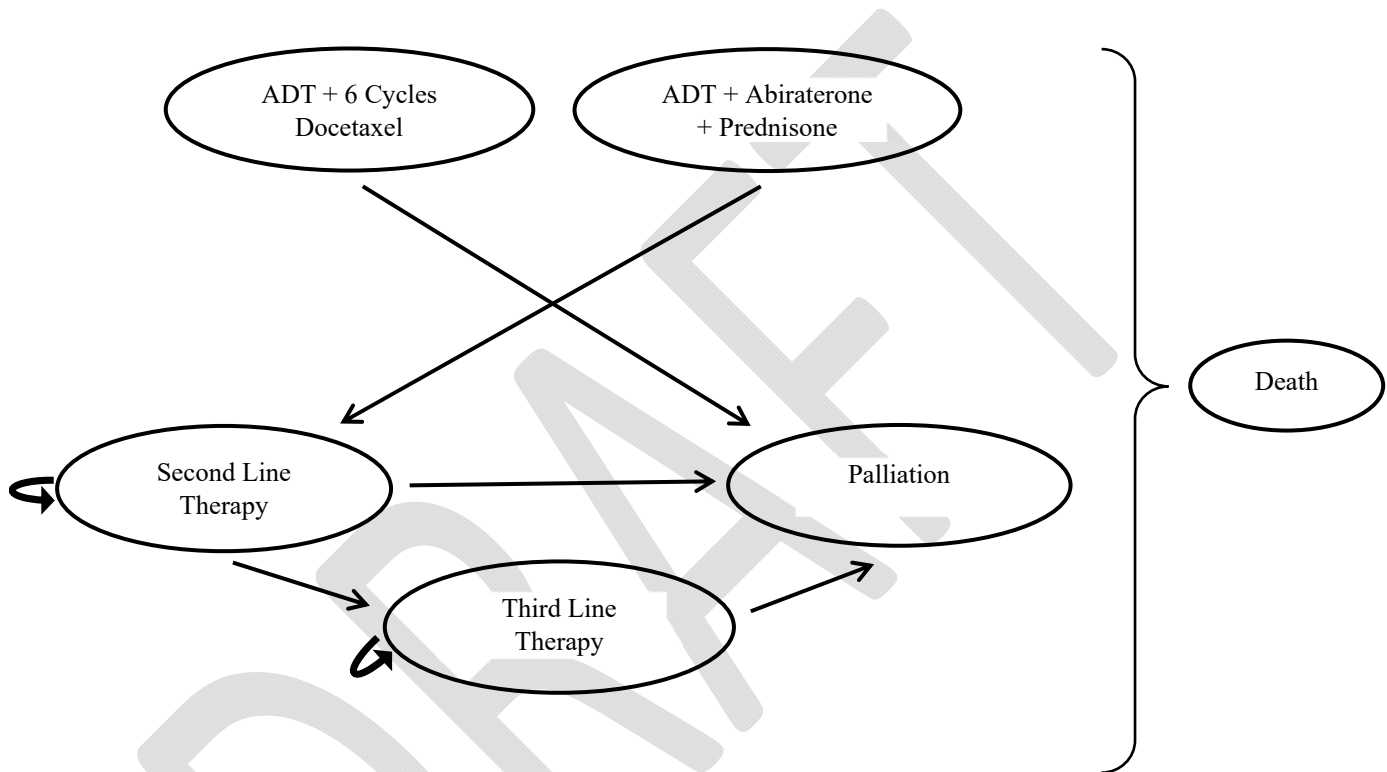


Fig. 2. Kaplan-Meier survival curve comparing initial treatment with androgen-deprivation therapy plus abiraterone acetate (AA) vs. androgen-deprivation therapy plus docetaxel chemotherapy (DC) among simulated men with metastatic castrate-sensitive prostate cancer. OS: overall survival.

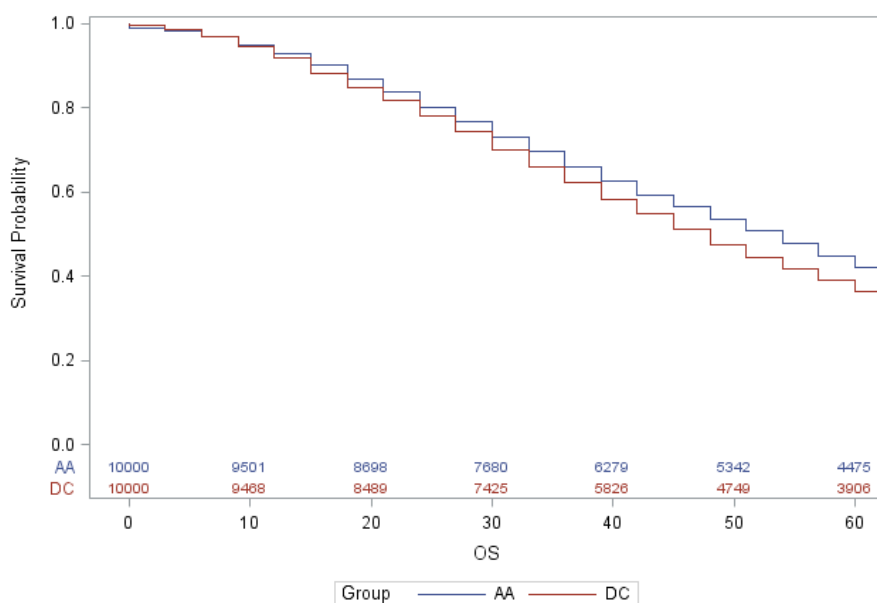


Fig. 3. Tornado diagram of incremental cost effectiveness ratio (ICER) of androgen-deprivation therapy (ADT) with abiraterone acetate (AA) vs. ADT with docetaxel chemotherapy (DC). Generated using 10 000 microsimulations. Blue: low; Red: high.

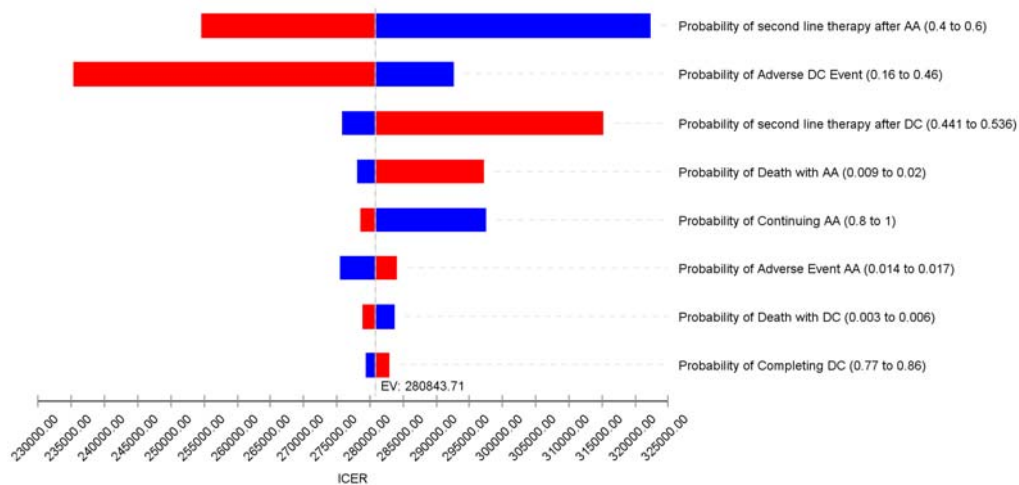
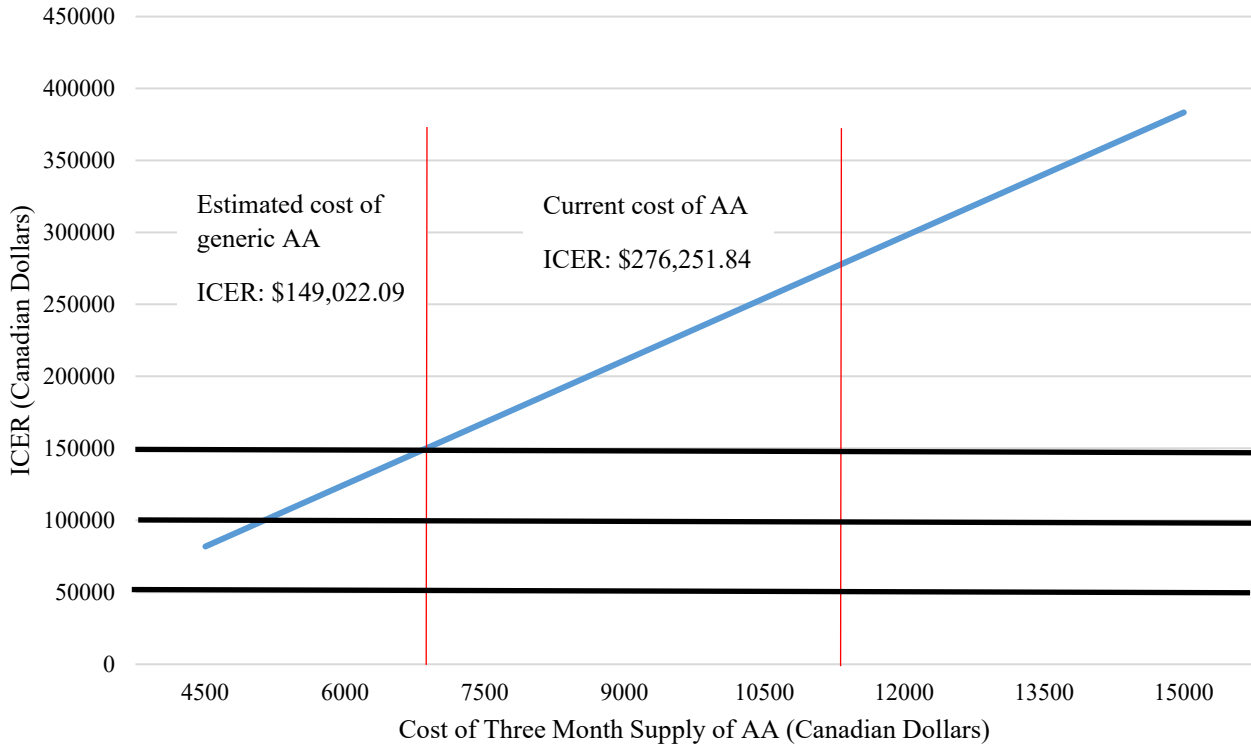


Fig. 4. Deterministic sensitivity analysis showing the incremental cost effectiveness ratio (ICER) of abiraterone acetate (AA) vs. docetaxel chemotherapy (DC) (blue). Graph shows the ICER (y-axis) based on the three-month cost of AA (x-axis) in Canadian dollars. Conventional willingness to pay (WTP) thresholds of \$50 000, \$100 000, and \$150 000 are shown (black). Model-estimated current cost of AA: \$11 927.07 (per three months) (red). Model-estimated cost of generic AA: \$7110.27 (per three months) (red).



DRAFT

Table 1. Model probabilities		
Probability	Value	Reference
Mortality on AA	0.01 (range 0.009–0.01)	Fizazi et al, 2017 ⁵ ; James et al, 2017 ⁸
Incremental adverse event on AA	15% over 30.4 months (range 14–15%)	Fizazi et al, 2017 ⁵ ; James et al 2017 ⁸
Complete AA	0.98	Fizazi et al, 2017 ⁵
Progression-free survival on AA	50% at 45.9 months ^{‡‡} (range 33.2–54.0)	Fizazi et al, 2017 ⁵ ; James et al, 2017 ⁸
Progression-free survival if discontinued AA	50% at 13.0 months ^{‡‡} (range 11.9–14.8)	Fizazi et al, 2017 ⁵ ; James et al, 2017 ⁸
Second-line therapy after AA	0.503 [‡]	Fizazi et al, 2017 ⁵
Mortality on DC	0.0045 (range 0.003–0.006)	Sweeney et al, 2015 ³ ; James et al, 2016 ⁴
Incremental adverse event on DC	0.232 (range 0.16–0.46)	Sweeney et al, 2015 ³ ; James et al, 2016 ⁴
Complete DC	0.81 [‡] (range 0.77–0.86)	Sweeney et al, 2015 ³ ; James et al, 2016 ⁴
Progression-free survival after DC	50% at 29.7 months [‡] (range 22.9–33.0)	Sweeney et al, 2015 ³ ; Gravis et al, 2016 ³⁰
Progression-free survival without DC	50% at 18.3 months [‡] (range 15.3–19.8)	Sweeney et al, 2015 ³ ; Gravis et al, 2016 ³⁰
Second-line therapy after DC	0.456 ^{‡‡} (range 0.441–0.536)	Sweeney et al, 2015 ³ ; James et al, 2016 ⁴
Progression-free survival on second-line therapy	AA: 50% at 8.3 months (range 5.0–8.5) DC: 50% at 7.6 months (range 4.0–7.6)	Cicero et al, 2017 ³¹ ; Scher et al., 2012 ⁷ ; Petrioli et al, 2015 ³² ; Azad et al, 2014 ³³ ; Mezynski et al, 2012 ³⁴ ; Suzman et al, 2014 ³⁵ ; De Bono et al, 2017 ³⁶ ; Fizazi et al, ³⁷ ; Oudard et al, 2017 ³⁸
Progression-free survival if did not complete second-line therapy	AA: 50% at 3.0 months (range 3.0–6.6) DC: 50% at 3.0 months (range 3.0–6.6)*	Scher et al, 2012 ⁷ ; Fizazi et al ³⁷
Probability of receiving third-line therapy	19% over 14.4 months (range 19–42%)	Scher et al 2012 ⁷

Mortality on third-line therapy	0.05 (0.002–0.05)	De Bono et al, 2010 ³⁹ ; Bracarda et al, 2014 ⁴⁰ ; Eisenberger et al ¹⁷
Adverse event on third-line therapy	0.592 (0.305–0.689)	Bracarda et al, 2014 ⁴⁰ ; Eisenberger et al ¹⁷ ; Saad et al, 2016 ⁴¹
Progression-free survival on third-line	50% at 2.8 months (range 2.6–5.5)	De Bono et al, 2010 ³⁹ ; Petrioli et al. 2015 ³² ; Al Nakouzi et al, 2015 ⁴² ; Wissing et al, 2015 ⁴³ ; Sonpavde et al, 2015 ⁴⁴ ; Caffo et al ⁴⁵ ; Pezaro et al ⁴⁶ ; Saad et al 2016 ⁴¹
Median survival with palliation	50% at 13 months (range 5.6–14.5)	Scher et al, 2012 ⁷ ; Eisenberger et al ¹⁷ ; Krishnan et al, 2014 ⁴⁷

‡Weighted average of the referenced trials. *Metastasis-only subgroup from the STAMPEDE-ABI trial used to generate progression-free survival. †Proportion of patients receiving chemotherapy, immunotherapy, or enzalutamide after progression in the LATITUDE trial (n=158/314). ‡Proportion of patients receiving non-steroidal, anti-androgen, non-docetaxel chemotherapy, or immunotherapy after progression in the CHARTED trial (n=213/397). *Time to progression after stopping second line DC not available. Assumed to be the same as time to progression after stopping second-line AA. AA: abiraterone acetate; DC: docetaxel chemotherapy

DRAFT

Utilities	Value	Reference
On AA	0.76 [‡] (range 0.63–0.84)	Krahn et al, 2003 ⁴⁸ ; Stewart et al, 2005 ⁴⁹ ; Collins et al, 2007 ⁵⁰ ; Volk et al, 2004 ⁵¹ ; Hall et al, 2019 ⁵²
Adverse event with AA	-0.11 [†]	Sanyal et al, 2016 ⁵³ ; Yong et al, 2012 ⁵⁴
AA surveillance	0.76 ^{‡*} (range 0.63–0.84)	Krahn et al, 2003 ⁴⁸ ; Stewart et al, 2005 ⁴⁹ ; Collins et al, 2007 ⁵⁰ ; Volk et al, 2004 ⁵¹ ; Hall et al, 2019 ⁵²
On DC	0.64 [*] (range 0.64–0.72)	Lloyd et al, 2015 ⁵⁵ ; Hall et al, 2019 ⁵²
Adverse event with DC	-0.11	Sanyal et al, 2016 ⁵³ ; Yong et al, 2012 ⁵⁴
DC surveillance	0.68 [*] (range 0.67–0.73)	Lloyd et al, 2015 ⁵⁵ ; Hall et al, 2019 ⁵²
On third-line therapy	0.55 [*] (range 0.55–0.72)	Collins et al, 2007 ⁵⁰ ; Lloyd et al, 2015 ⁵⁵ ; Sandblom et al, 2004 ⁵⁶
Adverse event on third-line therapy	-0.11	Sanyal et al, 2016 ⁵³ ; Yong et al, 2012 ⁵⁴
Third-line therapy surveillance	0.55 [*] (range 0.55–0.72)	Collins et al, 2007 ⁵⁰ ; Lloyd et al, 2015 ⁵⁵ ; Sandblom et al, 2004 ⁵⁶
Palliation	0.46	Sandblom et al, 2004 ⁵⁶

*Utilities calculated using weighted averages of the value from identified studies. [‡]Utility on androgen deprivation therapy alone

[†]Disutility of adverse AA event applied from chemotherapy literature. AA: abiraterone acetate; DC: docetaxel chemotherapy.

Event	Cost per patient month	Reference
ADT	\$371	Dragomir et al, 2014 ¹¹
On AA	\$3975.69 (range \$2370.09–3975.69)*	Dragomir et al, 2014 ¹¹
ER visits for AA	129 events per 5143 person-months	Wallis et al, 2018 ¹⁶
Hospitalizations for AA	108 events per 5143 person-months	Wallis et al, 2018 ¹⁶
AA adverse event requiring inpatient treatment	\$7099 (range \$5574–7099) [†]	CIHI PCE (https://www.cihi.ca/en/patient-cost-estimator)
AA adverse event requiring outpatient treatment	\$2056 (range \$1848–2056)	CIHI PCE (https://www.cihi.ca/en/patient-cost-estimator)
AA surveillance	\$3975.69 (range \$2370.09–3975.69)*	Dragomir et al, 2014 ¹¹
On DC	\$1300.35	Dragomir et al, 2014 ¹¹
ER visits for DC	703 events per 11436 person-months	Wallis et al, 2018 ¹⁶
Hospitalizations for DC	490 events per 11436 person-months	Wallis et al, 2018 ¹⁶
Chemotherapy/radiotherapy admission for neoplasm	\$7099 (range: \$6343–7099)	CIHI PCE (https://www.cihi.ca/en/patient-cost-estimator)
Chemotherapy adverse event requiring outpatient treatment	\$2056 (range \$1848–2056)	CIHI PCE (https://www.cihi.ca/en/patient-cost-estimator) ¹⁶
DC surveillance	\$526.35	Dragomir et al, 2014 ¹¹
On third-line therapy	\$9166.35	Dragomir et al, 2014 ¹¹
Adverse event on third-line therapy	\$7099 (range \$5679–7099)	CIHI PCE (https://www.cihi.ca/en/patient-cost-estimator)
Third-line therapy surveillance	\$155.35	Dragomir et al, 2014 ¹¹
Palliation	\$3671	Krahn et al, 2014 ⁵⁷ ; Sanyal et al, 2016 ⁵³

*Range generated using estimated cost of generic abiraterone. †Cost of an abiraterone related treatment complication assumed to be the same as a chemotherapy related treatment complication. AA: abiraterone acetate; ADT: androgen-deprivation therapy; CIHI PCE: Canadian Institute for Health Information Patient Cost Estimator; DC: docetaxel chemotherapy; HCP: healthcare professional; ER: emergency room.

Table 4. Clinically important sensitivity analyses for average effectiveness		
Probability	Value (Clinical range)	Threshold
Probability of adverse DC event	0.23 (0.16–0.46)	NR
Probability of adverse AA event	0.15 (0.14–0.15)	NR
Probability of completing DC	0.81 (0.77–0.86)	NR
Probability of completing AA	0.98	NR
Probability of death on AA	0.01 (0.009–0.01)	NR
Probability of death on DC	0.0045 (0.003–0.006)	NR
Probability of second line therapy after AA	0.50	NR
Probability of second line therapy after DC	0.46 (0.44–0.54)	NR
Starting age	65 years (40–100)	NR
Utility on AA	0.76 (0.63–0.84)	NR
Utility on DC	0.64 (0.64–0.72)	NR

Sensitivity analyses generated using 10 000 microsimulations. AA: abiraterone acetate; DC: docetaxel chemotherapy; NR: not reached.