

**The kidney cancer research priority-setting partnership: Identifying the top 10 research priorities as defined by patients, caregivers, and expert clinicians**

Jennifer Jones<sup>1</sup>, Jaimin Bhatt<sup>2</sup>, Jonathan Avery<sup>3</sup>, Andreas Laupacis<sup>4</sup>, Katherine Cowan<sup>5</sup>, Naveen Basappa<sup>6</sup>, Joan Basiuk<sup>7</sup>, Christina Canil<sup>8</sup>, Sohaib Al-Asaad<sup>9</sup>, Daniel Heng<sup>10</sup>, Lori Wood<sup>11</sup>, Dawn Stacey<sup>12</sup>, Christian Kollmannsberger<sup>13</sup>, Michael A.S. Jewett<sup>2</sup>

<sup>1</sup>Cancer Rehabilitation and Survivorship Program, Princess Margaret Cancer Centre, University Health Network, and Department of Psychiatry, University of Toronto, Toronto, ON, Canada; <sup>2</sup>Departments of Surgery and Surgical Oncology (Division of Urology), Princess Margaret Cancer Centre, University Health Network, and the University of Toronto, Toronto, ON, Canada; <sup>3</sup>School of Rehabilitation Sciences, University of Ottawa, ON, Canada; <sup>4</sup>Li Ka Shing Knowledge Institute of St. Michael's Hospital, Toronto, ON, Canada; <sup>5</sup>James Lind Alliance, Southampton, United Kingdom; <sup>6</sup>Department of Oncology, University of Alberta, Edmonton, AB, Canada; <sup>7</sup>Kidney Cancer Research Network of Canada; <sup>8</sup>Department of Internal Medicine, Division of Medical Oncology, University of Ottawa, Ottawa, ON, Canada; <sup>9</sup>Department of Medical Oncology, Dr. H. Bliss Murphy Cancer Centre, Memorial University of Newfoundland, St. John's, NF, Canada; <sup>10</sup>Department of Medical Oncology, University of Calgary and Tom Baker Cancer Centre, Calgary AB, Canada; <sup>11</sup>Division of Medical Oncology, Department of Urology, Dalhousie University, Halifax, NS, Canada; <sup>12</sup>Faculty of Health Sciences, School of Nursing and Ottawa Hospital Research Institute, Ottawa, ON, Canada; <sup>13</sup>Medical Oncology, University of British Columbia and Medical Oncology BC Cancer Agency, Vancouver, BC, Canada

**Acknowledgements:** *Members of the Steering Committee who are not authors: Eric Hyndman, MD, Stephen Andrew, Christine Collins, Marion Cooper, Mary Mackinnon, Karen Ross, Andrew Weller, and Wim Wolfs.*

**Funding/Support:** *The work was supported by a grant from the Canadian Institutes of Health Research (Grant # 138851).*

**Cite as:** *Can Urol Assoc J* 2017; Epub ahead of print. <http://dx.doi.org/10.5489/cuaj.4590>

**Published online November 1, 2017**

\*\*\*

**Abstract**

It is critically important to define disease-specific research priorities to better allocate limited resources. There is growing recognition of the value of involving patients and caregivers, as well as expert clinicians in this process. To our knowledge, this has not been done this way for kidney cancer. Using the transparent and inclusive process established by the James Lind Alliance, the Kidney Cancer Research Network of Canada (KCRNC) sponsored a collaborative consensus-based priority-setting partnership (PSP) to identify research priorities in the management of kidney cancer. The final result was identification of 10 research priorities for kidney cancer, which are discussed in the

context of current initiatives and gaps in knowledge. This process provided a systematic and effective way to collaboratively establish research priorities with patients, caregivers, and clinicians and provides a valuable resource for researchers and funding agencies.

## Introduction

Priority setting for health research which reflects the views of patients, caregivers, and the health care providers (expert clinicians) who treat them, can improve the relevance, quality and uptake of research.<sup>1-7</sup> In 2010, the US based Patient-Centered Outcomes Research Institute (PCORI) was established with a mandate that includes the engagement of patients and other stakeholders in all aspects of the research process including the development of shared research agendas to “study the issues that are most crucial to them”.<sup>8</sup> The Canadian Institute of Health Research (CIHR), developed the Canadian Strategy for Improving Patient-Oriented Research which recognized the important role for patients to increase the likelihood that research priorities are relevant, and recommended the creation of collaborative pan-Canadian processes for identifying and establishing research priorities.<sup>5</sup> Despite this, the identification of research priorities in health research has not typically involved these stakeholders and many funding organisations continue to rely on researchers to submit proposals based on their own perceived priorities.<sup>9</sup> These may not be shared by patients, caregivers or clinicians which can result in “costly mismatches of research-to-needs”.<sup>10-13</sup> The James Lind Alliance (JLA) is an international leader in setting research priorities<sup>6</sup> and has developed a rigorous methodology to “...enable patients, caregivers, clinicians and the groups that represent them to ensure that research is grounded in what matters to them jointly”.<sup>6</sup> These aims are achieved by forming ‘priority setting partnerships’ (PSPs) which bring together patients, caregivers, and clinicians along with their representative organizations to identify what are termed unanswered management questions and therefore reach consensus on the top 10 shared research priorities.<sup>14</sup> While the JLA methodology is well-established in the UK, it has not been widely applied in North America or for the management of cancers in general.

It is estimated that there will be ~69,000 new cases of kidney cancer diagnosed in North America in 2016. One-third will ultimately die from the disease.<sup>15-18</sup> As well, the development of effective targeted therapies for metastatic tumours has resulted in a growing population<sup>16-19</sup> of patients suffering from chronic but relatively stable metastatic disease. There has been a vigorous renaissance of interest and research activity in kidney cancer due to these new treatments as well as advances in genomics and the increased use of biopsy. Unfortunately, disparities and variation in clinical practice for kidney cancer remain<sup>20-22</sup> and the research investment in kidney cancer has not been proportionate to its burden on patients, caregivers, clinicians and health care resources.<sup>23, 24</sup> The development of a strategic research agenda in kidney cancer which is informed by current

evidence and the perceived priorities of stakeholders is urgently needed and has the potential to result in research to provide solutions to fill important gaps in the management of kidney cancer and improve overall health and wellbeing of those diagnosed with kidney cancer. In response, the Kidney Cancer Research Network of Canada (KCRNC) in collaboration with the JLA, Kidney Cancer Canada (KCC), the Kidney Foundation of Canada (KFofC), formed a PSP to identify unanswered management questions related to kidney cancer and identify the top 10 research priorities shared by patients, caregivers and clinicians. To our knowledge, there has never been a report of such a process for kidney cancer nor has there been a similar consensus-based prioritization approach for any cancer type in North America.

The primary objectives of our priority setting partnership were:

- 1) To have patients, caregivers and expert clinicians identify unanswered questions encountered during management of kidney cancer
- 2) To agree by consensus on a prioritized list of the top 10 shared unanswered questions and establish corresponding research priorities

## **Priority Setting Process and RESULTS**

### ***Step 1: Formation of steering group***

A 15 person Steering Group was formed with 7 patients/caregivers and 7 expert clinicians from across Canada. The group also included an advisor from the JLA (UK) who provided support and advice throughout the process. The Steering Group's responsibilities included defining the scope of the partnership, development of the protocol, identifying potential partners and stakeholders, and oversight of the PSP process. To fulfill this role, the Steering Group held at least monthly conference calls from June 2014 to March 2015.

### ***Step 2: Identifying treatment questions***

To identify unanswered questions arising during the management of kidney cancer, a broad representation of patients, caregivers and clinicians across Canada were surveyed. The survey instrument started with the following open-ended question: "*What uncertainties have you faced about the overall management of kidney cancer? Think broadly. You can include uncertainties about diagnosis, prognosis (prediction of how things may develop in the disease), treatment, and anything else. You can include as many uncertainties as you like.*" The next part of the survey provided respondents with specific prompts to help them consider additional management uncertainties that they felt should be answered by research including domains such as surgical and medical treatments, management of symptoms, lifestyle factors, and psychosocial issues. Basic demographic information was also collected to determine whether the population of interest was successfully captured.

The survey was distributed electronically between September, 2014 and November, 2014 via FluidSurveys™ and paper-based copies were distributed in medical clinics as well as at the healthcare professionals' association meetings. The survey was advertised through the Kidney Cancer Canada and the Kidney Foundation of Canada websites and newsletters in both official languages and through social media channels. The survey was also distributed by e-blasts to the members of various clinical associations including the Canadian Urological Association (CUA), Genitourinary Medical Oncologists of Canada (GUMOC), Canadian Association of Nurses in Oncology (CANO) and the Urology Nurses of Canada (UNC).

A total of 225 respondents completed the survey and 2004 treatment questions or uncertainties were identified (Figure 1). One hundred thirty-five (59%) respondents were patients including those who had been treated for kidney cancer in the past (n=98), those who were currently on treatment (n=34), and those who were recently diagnosed and currently waiting for surgical treatment (n=4). Sixty (27%) were clinicians including urologists (n=25), nurses (n=18) and medical oncologists (n=7). Thirty-five (14%) were family caregivers. The large majority of surveys were completed online (92%). Most respondents expressed more than one uncertainty; with an average of 9 per respondent.

### ***Step 3: Collating questions***

During data collection, questions were concurrently organized into 10 categories using a taxonomy for kidney cancer management developed for this study by the Steering Group (Table 1). Questions from the survey were categorized by iteratively grouping similar ones. Duplicates were combined with notation and those deemed out of scope, were removed. Examples of out of scope questions were those with a knowledge transfer issue, a personal medical condition or if the uncertainty was felt to be unanswerable by research. Many responses included narrative texts which were re-phrased to clarify the precise question while attempting to reflect the intent of the response. The project manager (JB) and the research assistant (JA) met weekly to analyze responses. Of the initial 2004 questions submitted, 1553 were identified as out of scope or duplicates and combined, leaving 451 unique questions from the survey.

The final long list was then further refined by reviewing the literature to filter out those questions already answered. The literature review involved cross-checking questions with current systematic reviews, clinical care guidelines and individual studies. A search strategy was developed with an information specialist (RF) to identify systematic reviews and clinical care guidelines using Embase and Medline. Other databases consulted included the European Society for Medical Oncology Clinical Practice Guidelines (ESMO), the National Comprehensive Cancer Network (NCCN), the National Institute for Health and Care Excellence (NICE), the National Guideline Clearinghouse (NCG) and the Canadian Medical Association Clinical Practice Guidelines

Database (CPGs). This search of the literature reduced the 451 uncertainties to 246 unique uncertainties by filtering out previously answered questions.

***Step 4: Interim ranking of questions***

The list of 246 questions, including the source and frequency of each (number of times the question was identified by patients, caregivers and clinicians) was circulated to a sub-sample of 10 respondents who had participated in the first survey and expressed an interest in further participating in an interim ranking exercise and also to the 15 member Steering Group. Over the course of two weeks, these individuals ranked the relative importance of each question, commented on the wording of the question, and indicated their own top ranked 20. The rankings were entered in a spreadsheet and scored. The Steering Group then considered the ratings and agreed on a short list of 29 questions which were taken forward for consideration at a final priority setting workshop.

***Step 5: Final priority setting workshop***

The final face-to-face priority setting workshop took place in February 2015 with the aim of reaching consensus on the top 10 research priorities. There were (23) participants from across Canada (10 patients; 2 caregivers; 7 physicians; 2 nurses; 1 psychologist and 1 dietitian) plus 3 facilitators with experience in priority setting processes who facilitated the discussions and encouraged equitable participation of all attendees.

In preparation for the workshop, participants were provided with the short-list of 29 questions and were asked to review and rank their own top 10. The one-day workshop followed the JLA protocol and utilized a nominal group technique to reach consensus. Participants were divided into three groups (with a near equal mix of patients, care providers and clinicians) who met separately for the remainder of the morning. Each participant stated their own views on the questions they felt most and least strongly about. Groups were provided with a set of cards with the questions printed on one side and the examples of original uncertainties on the other side. Using a “diamond nine” ranking approach,<sup>25, 26</sup> each group ranked the 29 questions. During the break, the rankings from the three groups were combined. All workshop participants then reconvened and were provided with group and overall rankings. Clear areas of consensus/disparity between the groups were highlighted and discussed and some items were reworded and combined. Following this, participants were re-allocated to three different small groups to reconsider the aggregate list of 29 ranked questions. During this second round, there was specific focus on the top 15, with the goal of agreeing on the top 10. In the final step, the rankings from all three groups were again combined and the aggregate top 15 were presented in order on individual cards and were discussed. The final 10 were agreed to by the whole group.

The resultant 10 priorities recommended for future research studies in kidney cancer were:

1. (3-way tie)

- 1a. Development and evaluation of new effective treatment for patients with advanced kidney cancer of the non-clear cell varieties / sub-types.
- 1b. Identification and validation of biomarkers that may be used to predict the response to a treatment for kidney cancer.
- 1.c Identification and validation of biomarkers that may be used for the detection of kidney cancer.
4. Development and evaluation of new immunotherapies for the treatment of kidney cancer including immune biomarkers of patient and tumour characteristics and response.
5. Identification and validation of novel indicators or biomarkers that can be used to predict the development and progression of metastatic kidney cancer.
6. Assessment of supportive care needs and appropriate supportive care interventions for patients with kidney cancer and their families.
7. Development of decision making tools for patients and healthcare providers to help guide treatment decisions in all stages of kidney cancer
8. Defining the role and criteria for using biopsy in the management of kidney cancer.
9. Evaluation of the impact of differences in regional funding and access to treatment on patient outcomes for kidney cancer.
10. Identification of risk factors and cause(s) of kidney cancer

Table 2 shows examples of the unanswered management questions related to each research priority.

### **Discussion and future directions**

Using a rigorous and transparent process that included the perspectives of patients, caregivers and the clinicians who care for them, the kidney cancer PSP reached consensus on the top 10 unanswered management questions and resultant research priorities. They encompass the full range of care from prevention to diagnosis to treatment of kidney cancer. Each priority can lead to the development of research hypotheses that would be actionable by a research project or program.

#### ***Development and evaluation of new effective treatment for patients with advanced kidney cancer of the non-clear cell varieties/sub-types (Priority 1a)***

Despite advances on the outcome of patients with advanced kidney cancer using new targeted therapies, optimal treatment for non-clear cell varieties such as papillary, chromophobe, collecting duct cancers still remains uncertain. This is due to the fact that patients with non-clear cell histology are typically excluded from trials of targeted agents. While there is evidence to suggest that targeted agents currently approved for kidney cancer may be somewhat effective in non-clear cell histologies in retrospective literature and some small subgroup analyses of clinical trials, more research is required. Clinical trials such as ASPEN<sup>27</sup> and ESPN<sup>28</sup> have set benchmarks for TKI outcomes however the trials are small and conclusions are difficult to reach about superiority of one treatment

versus another. Future clinical trials evaluating other systemic agents or combined therapies in this population are needed. For example, molecular research that compares subtypes may aid in the understanding of why some patients with non-clear cell kidney cancer have extremely good responses to currently available targeted therapy and can also be used to inform the development of new targeted agents for the various non-clear cell subgroups.<sup>29</sup> The Cancer Genome Atlas has studied papillary renal cell carcinomas and characterized type I cancers with MET mutations and divided type II papillary RCCs into at least 3 subgroups with activation of the NRF2-ARE pathway, CDKN2A loss, and CIMP, the latter two conveying a poor prognosis (NEJM 2016).<sup>30</sup> Further studies need to further characterize and target these changes and elucidate their role in the era of immuno-oncology. Finally, clinical trials specifically designed to evaluate current targeted agents in non-clear cell varieties. Of note, there is a SWOG-led intergroup trial of metastatic papillary renal cell carcinoma randomizing patients between standard-of-care sunitinib, versus volitinib, cabozantinib or crizotinib, the latter three of which have activity against MET (NCT02761057). These types of clinical trials should be prioritized.

***The role of biomarkers and other novel indicators in both the detection of kidney cancer and its progression (Priority 1b, 1c, 5)***

Early detection of small asymptomatic kidney cancers probably increases survival, but also reduces the need for more invasive treatments such as total nephrectomy resulting in fewer complications, faster recovery and lower costs as well as preservation of renal function and minimization of future kidney disease.<sup>31</sup> The identification and validation specific tumor biomarker(s) may provide a cost-effective, safe and more reliable tool for kidney cancer screening. While tumour biomarkers are not yet available for application,<sup>32</sup> there is some emerging and encouraging research in this area. For example, recent evidence suggests that urine aquaporin-1 (AQP1) and perilipin-2 (PLIN2) concentrations are elevated in patients with kidney cancer but not in benign kidney diseases and that these may be sensitive and specific biomarkers for the early noninvasive detection of clear cell or non-clear cell subtypes of kidney cancer.<sup>33, 34</sup> Other potential novel biomarkers that are currently being investigated include urinary exosomes (EX) which have some potential to become additional prognostic disease markers for kidney cancer<sup>(35)</sup>. The identification of biomarkers predicting response to therapy with targeted agents or immunotherapy remains a priority. Only clinically validated and reliable predictive biomarkers will allow us to optimally use the current armamentarium of available treatment options and integrate novel active agents. No clinically validated biomarkers ready for clinical use has yet been identified. Intra-tumor heterogeneity with the majority of genetic aberrations being sub-clonal is a formidable challenge.<sup>36, 37</sup> A number of candidate biomarkers have been identified for targeted agents including loss of function mutations in VHL or TSC1, differences in host genetics such as single

nucleotide polymorphisms in VEGF, HIV-1 $\alpha$ , or IL-8, or mutations in the tumor suppressor genes BAP-1, SETD-2, or a composite score of circulating biomarkers e.g. IL-18.<sup>38-41</sup> Since only approximately 20% of patients have no benefit at all from targeted agents, identifying markers of primary resistance may also be crucial. Lack of standardisation in assessing biomarkers is another challenge, particularly in immunotherapy. The assessment of PD-L1 immunohistochemistry as a predictive biomarker is impacted by multiple unresolved issues including variable detection antibodies, differing IHC cut-offs, tissue preparation, processing variability, primary versus metastatic biopsies, and staining of tumor versus immune cells.<sup>31-35, 42-47</sup>

***Development and evaluation of new immunotherapies for the treatment of kidney cancer including immune biomarkers of patient and tumour characteristics and response (Priority 4)***

Immune-oncology (IO) is an exciting area of treatment of metastatic RCC which is experiencing a renaissance. Novel therapies that are used in combination and sequentially with targeted therapies have the potential to improve outcomes in kidney cancer, and results from ongoing and future research trials will help to inform future treatment strategies (Checkmate 025 study).<sup>40</sup> A number of strategies are currently under investigation, including checkpoint inhibitors and immune modulators, cancer vaccines, adoptive cell therapy, monoclonal antibodies, and cytokines.<sup>32, 38</sup> The most developed IO agent in mRCC is nivolumab, a newly approved and expensive immune checkpoint inhibitor, which has demonstrated significant improvements in overall survival<sup>39, 40</sup> and is also now being studied in combination with cabozantinib, a new small-molecule inhibitor of tyrosine kinases ([ClinicalTrials.gov](https://clinicaltrials.gov/ct2/show/study/NCT02496208) number, NCT02496208), and ipilimumab, a CTLA4 inhibitor ([ClinicalTrials.gov](https://clinicaltrials.gov/ct2/show/study/NCT02231749) number, NCT02231749). Despite this renaissance, patient selection with biomarkers has not been successful. Several attempts to use PDL1 expression as a biomarker of efficacy for these immune-oncology agents have not been successful. Because at least 30-40% of patients have no benefit from PD1 directed therapy, it is important to identify a biomarker so that we do not waste the valuable time the patient has on therapy that is not effective.

***Defining the role and criteria for using biopsy in the management of kidney cancer (Priority 8)***

With the development of targeted drugs for metastatic kidney cancer, there has been a renewed interest in the use of renal mass biopsy (RMB) to assess pretreatment tumor histology in order to individualize and personalize therapy.<sup>48</sup> Likewise, due to concerns regarding overtreatment of SRMs (and kidney cancers), RMB has been proposed as triage tool to identify pretreatment the histology of incidentally diagnosed SRMs, with the objective to decrease unnecessary surgical procedures and associated adverse events for benign masses and also potentially for low-metastatic potential kidney cancers.<sup>49</sup>



Despite the growing evidence supporting the safety, reliability and accuracy of RMBs in the management of SRMs,<sup>49-51</sup> there remain skepticism among urologists as to their clinical usefulness as many believe that they rarely provide actionable information.<sup>52</sup> Consequently, in spite of their promising role in both the diagnosis and treatment of SRMs/kidney cancer, RMBs have not been widely adopted by the urologic community. Thus, future work is needed to debunk the current concerns of urologists regarding the use of RMBs in the management of SRMs<sup>48</sup> and to explore how RMBs can be integrated with treatment algorithms to inform risk stratification of patients with SRMs and aid in decision making.<sup>53, 54</sup>

Recent advances in genetics and epigenetics has improved our understanding of kidney cancers and their clinical outcomes. Studies have shown that gene expression profiling is feasible on tissues<sup>55, 56</sup> obtained through RBM. As a result, the role of RMB seems promising and may expand even more in the next decade. Given the current evidence, it seems plausible that the future of SRM management will combine pathological, molecular and genetic information obtained via RMB which will improve our ability to predict the behaviour of these lesions, guide management and ultimately, facilitate personalization of care.

***Assessment of supportive care needs and appropriate supportive care interventions for patients with kidney cancer and their families (Priority 7)***

Studies to date have documented unmet informational and supportive care (psychological, emotional, and social) needs in patients with kidney cancer and suggest that the treatment of kidney cancer can impact negatively on physical and psychosocial functioning.<sup>14, 15, 57, 58</sup> However, as with other cancer types, there remains a need for rigorous research regarding the optimal approach to supportive care needs assessment.<sup>59</sup> The provision of supportive care interventions (i.e. patient education, psychosocial support, palliative care, rehabilitation) have the potential to improve patient outcomes<sup>60</sup> but have not yet been developed or tested in this population.<sup>61</sup> Future research, including qualitative studies to determine the types of interventions kidney cancer patients feel would meet their psychosocial needs along with prospective and well-designed RCTs, should focus on the development of practical supportive care interventions. Kidney Cancer Canada is currently collaborating with members of KCRNC on a cross-sectional survey study to identify needs and barriers to access to treatment, information and support for patients with kidney cancer in Canada.<sup>62</sup> In addition, a proposed project through the KRCNC is the development of a prospective research database of Patient Reported Outcomes for patients diagnosed with kidney cancer in Canada.<sup>63</sup> This data could be used to further identify supportive care needs and assist in the development of and evaluation of supportive care interventions.

***The development of decision making tools for patients and healthcare providers to help guide treatment decisions in all stages of kidney cancer (Priority 8)***

Shared decision making is particularly relevant for patients diagnosed with kidney cancer who face a range of decisions regarding surgical alternatives for early stage cancer or second/third line treatments for metastatic disease. Shared decision making is the process by which decisions are made between clinicians and patients based on the best available evidence and patients' informed values.<sup>64</sup> These decisions are complex, given that patients must understand and weigh the benefits and harms across treatment options, and this information is frequently presented in inaccessible, academic formats. There is high quality evidence that decision aids compared to usual care improve people's engagement in decision making, knowledge of options, accurate risk perceptions of outcomes, and reduce their decisional conflict related to feeling uninformed and unclear about their personal values.<sup>65</sup> However, decision tools have not been developed or evaluated in kidney cancer<sup>65, 66</sup> and there are many challenges to integrating them into the process of care which need also to be addressed through research.<sup>67, 68</sup> Many patients and family members wish to be active participants in making decisions regarding their medical care. Patients are often faced with circumstances where there is no one "best" treatment choice, but rather a personal decision that incorporates their own values and preferences. This is particularly relevant for patients diagnosed with early stage kidney cancer who are presented with surgical options or for patients with metastatic disease who must choose between equally efficacious drug therapies. Complex medical decisions can be overwhelming for patients who must understand and weigh the benefits and risks of treatments, and this is frequently presented in inaccessible, academic formats. Decision aids are tools that can be used by patients and health care professionals to assist in shared decision making.<sup>68</sup> There is high quality evidence that decision aids compared to usual care improve people's knowledge regarding options, and reduce their decisional conflict related to feeling uninformed and unclear about their personal values.<sup>65</sup> There have been many decision aids developed for cancer treatment and screening,<sup>65</sup> however, none have been developed or evaluated in kidney cancer. In addition, there are many challenges to integrating these decision aids into the process of care which need to be addressed through further research. Examples of proposed decision aids that could be developed for patients diagnosed with kidney cancer include the use of cytoreductive nephrectomy for newly diagnosed metastatic disease, and options for management of small renal masses.<sup>58, 63-69</sup>

***Evaluate the impact of differences in regional funding and access to treatment on patient outcomes for kidney cancer (Priority 9)***

Given the current Canadian healthcare system limitations with provincial planning and budgeting, patients, families and clinicians are concerned about timely access to quality care and treatments. For example, access to oral targeted -therapies for kidney cancer

differs by province and not all patients are eligible for coverage. (new reference below A). In addition to funding differences, there is also documented variation in practice patterns with evidence showing that rural residents are also less likely to receive partial nephrectomies compared to their urban counterparts.<sup>70</sup> Further, patients who must travel to receive treatment have higher mortality rates compared to those who have urologic care is available in their immediate communities.<sup>71</sup> Odisho et al. (2010) found direct access to a urologist resulted in 8–14% reduction in kidney cancer mortality.<sup>71</sup> Future research is ongoing and needed to determine the on disparities and differences in kidney cancer management and outcomes disparities and ongoing surveillance will provide important evidence. This will help delineate the on the current magnitude and pattern of health delivery gaps over time in relation to different and changing health care policies so that improvement strategies can be implemented.<sup>72</sup> Based on this priority, the KCRNC membership is actively looking at regional differences in kidney cancer care through the pan Canadian Kidney Cancer information system which collects data on kidney cancer patients from 15 academic centers across Canada.<sup>73</sup>

***The identification of risk factors and cause(s) of kidney cancer (Priority 10): The identification of risk factors and cause(s) of kidney cancer (Priority 10)***

Patients and family were particularly interested in research to identify risk factors for kidney cancer, and certainly more work is needed in this area as it is ideal to prevent rather than just better treat kidney cancer. Like other cancers, the etiology and risk (and protective) factors of kidney cancer are not completely understood. There is some research which suggests that the increased incidence of RCC and other kidney tumors may be in part due to the rise in hypertension and obesity.<sup>74</sup> Lifestyle and health behaviours such as physical activity, smoking and alcohol consumption may also play an etiologic role though more research is needed to establish causal relationships.<sup>17</sup> There is also interest in the role of genetics and its role in the pathogenesis of renal cell cancer. There are a number of single genes associated with the development of familial and inherited forms of renal cell cancer. These include highly penetrant genes such as *VHL*, *MET*, *BAP1*, and *FLCN* where individuals develop RCC at young ages, and have a family history suggestive of an inherited etiology.<sup>75</sup> While rare, personalized approaches to the care of mutation carriers can be implemented based on the gene and mutation.<sup>76</sup> Other more common genetic variants and their interaction with environmental exposures have been proposed to influence renal cell cancer risk in non-heritable forms of RCC. To date, the majority of studies have been based on genome-wide association studies but results have been mixed.<sup>77,78</sup> The advancement in next generation sequencing for genome-scale studies will enable researchers to conduct more comprehensive evaluations of common genetic variations and have the potential to lead to novel discoveries into the genetic determinants and how their interaction with environment may influence renal cell cancer etiology.<sup>17</sup>

While these top 10 uncertainties and resulting research priorities should not be the sole driver of the research agenda, we believe they should receive careful consideration by funders and researchers alike. Each of the priorities could be explored with carefully designed research. Given the CIHR's mandate to include patients in determining what type of research should be funded, this study presents an effective way to collaboratively establish research priorities with patients, caregivers and healthcare providers.

DRAFT

## References

1. Caron-Flinterman JF, Broerse JE, Bunders JE. The experiential knowledge of patients: a new resource for biomedical research? *Soc Sci Med* 2005;60:2575-84.
2. Entwistle VA, Renfrew MJ, Yearley S, et al. Lay perspectives: advantages for health research. *BMJ* 1998;316:463-6.
3. Goodare H, Lockwood S. Involving patients in clinical research. Improves the quality of research. *BMJ* 1999;319:724-5.
4. CIHR. International review panel report 2011 [cited 2014 August 10]. Available from: <http://www.cihr-irsc.gc.ca/e/43993.html>.
5. CIHR. Canada's strategy for patient-oriented research: Improving health outcomes through evidence-informed care. 2013 [cited 2013 September 27]. Available from: <http://www.cihr-irsc.gc.ca/e/44000.html>.
6. The James Lind Alliance J. [cited 2014. August 10 ]. Available from: <http://www.lindalliance.org/index.asp>. .
7. Cowan K, Oliver S. The James Lind Alliance Guidebook: version 5. United Kingdom: The James Lind Alliance; 2013. p. 96.
8. Patient-Centered Outcomes Research Institute. Easier treatment for serious infection. Available from: <http://www.pcori.org/>.
9. Stewart R, Oliver S. A systematic map of studies of patients' and clinicians' research. London: The James Lind Alliance; 1998. p. 55.
10. NifH Research. Patient & public awareness. 2014 [cited 2014 August 10]. Available from: <http://www.nihr.ac.uk/awareness/Pages/default.aspx>. .
11. Ljungberg B, Bensalah K, Canfield S, et al. EAU guidelines on renal cell carcinoma: 2014 update. *Eur Urol* 2015;67:913-24.
12. Novara G, Secco S, Botteri M, et al. Factors predicting health-related quality of life recovery in patients undergoing surgical treatment for renal tumors: prospective evaluation using the RAND SF-36 health survey. *Eur Urol* 2010;57:112-20.
13. Tallon D, Chard J, Dieppe P. Relation between agendas of the research community and the research consumer. *Lancet* 2000;355:2037-40.
14. Ficarra V, Novella G, Sarti A, et al. Psycho-social well-being and general health status after surgical treatment for localized renal cell carcinoma. *Int Urol Nephrol* 2002;34:441-6.
15. De P, Otterstatter MC, Semenciw R, et al. Trends in incidence, mortality, and survival for kidney cancer in Canada, 1986–2007. *Cancer Causes Control* 2014;25:1271–81.
16. NCI. A snapshot of kidney cancer: Incidence and mortality. 2014. Available from: <http://www.cancer.gov/research/progress/snapshots/kidney>.

17. Chow WH, Dong LM, Devesa SS. Epidemiology and risk factors for kidney cancer. *Nat Rev Urol* 2010;7:245-57.
18. Kassouf W, Siemens R, Morash C, et al. Follow-up guidelines after radical or partial nephrectomy for localized and locally advanced renal cell carcinoma. *Can Urol Assoc J* 2009;3:73-6.
19. Canadian Cancer Research Alliance C. Cancer research investment in Canada, 2008–2012: The Canadian cancer research alliance's survey of government and voluntary sector investment in cancer research in 2012. Toronto: CCRA; 2015.
20. Harrison MR, Hirsch BR, George D, et al. Real-world outcomes in metastatic renal Cell carcinoma: Insights from a joint community-academic registry. *J Oncol Pract* 2014;10:e63-e72.
21. Miller DC, Saigal C, Banerjee, et al. Diffusion of surgical innovation among patients with kidney cancer. *Cancer* 2008;112:1708-17.
22. Tan HJ, Meyer AM, Kuo TM, et al. Provider-based research networks and diffusion of surgical technologies among patients with early-stage kidney cancer. *Cancer* 2015;121:836-43.
23. Canadian Cancer Research Alliance C. Cancer research investment in Canada, 2005-2009. 2012.
24. National Cancer Institute N. NCI funded research portfolio (NFRP) 2013.
25. UDoHaH Services, promotion. OoDPaH. Healthy people 2010 Toolkit: Setting health priorities and objectives. Washington DC: US Department of Health and Human Services; 2010. p. 28.
26. Rockett M, Percival S. Thinking for learning. Stafford: Network Educational Press; 2002.
27. Armstrong AJ, Halabi S, Eisen T, et al. Everolimus versus sunitinib for patients with metastatic non-clear cell renal cell carcinoma (ASPEN): a multicentre, open-label, randomised phase 2 trial. *Lancet Oncol* 2016;17:378-88.
28. Tannira NM, Jonascha E, Albigesb L, et al. Everolimus versus sunitinib prospective evaluation in metastatic non-clear cell renal cell carcinoma (ESPN): A randomized multicenter phase 2 trial. *Eur Urol* 2016;69:866-74.
29. Cancer Genome Atlas Research Network C, Linehan WM, Spellman PT, et al. Comprehensive molecular characterization of papillary renal-cell carcinoma. *N Engl J Med* 2016;374:135-45.
30. Linehan WM, Spellman PT, Ricketts CJ, et al. Comprehensive molecular characterization of papillary renal-cell carcinoma. *N Engl J Med* 2016;374:135-45.
31. Rini BI, Campbell SC, Escudier B. Renal cell carcinoma. *Lancet* 2009;373:1119-32.
32. Bhatt JR, Finelli A. Landmarks in the diagnosis and treatment of renal cell carcinoma. *Nat Rev Urol* 2014;11:517-25.

33. Morrissey JJM, Mobley J, Figenschau RS, et al. Urine aquaporin 1 and perilipin 2 differentiate renal carcinomas from other imaged renal masses and bladder and prostate cancer. *Mayo Clin Proc* 2015;90:35-42.
34. Morrissey JJ, Mellnick VM, Luo J, et al. Evaluation of urine aquaporin-1 and perilipin-2 concentrations as biomarkers to screen for renal cell carcinoma: A prospective cohort study. *JAMA Oncol* 2015;1:204-12.
35. Franzen CA, Blackwell RH, Foreman KE, et al. Urinary exosomes: The potential for biomarker utility, intercellular signaling, and therapeutics in urologic malignancy. *J Urol* 2015;S0022-5347:05509-3.
36. Hu K, Lou L, Ye J, et al. Prognostic role of the neutrophil-lymphocyte ratio in renal cell carcinoma: a meta-analysis. *BMJ Open* 2015;5(4:e006404.).
37. Funakoshi T, Lee CH, Hsieh JJ. A systematic review of predictive and prognostic biomarkers for VEGF-targeted therapy in renal cell carcinoma. *Cancer Treat Rev* 2014;40:533-47.
38. Escudier B. Emerging immunotherapies for renal cell carcinoma. *Ann Oncol* 2012;23:viii35-viii40.
39. Thomas JS, Kabbinavar F. Metastatic clear cell renal cell carcinoma: A review of current therapies and novel immunotherapies. *Crit Rev Oncol Hematol* 2015;96:527-33.
40. Motzer RJ, Escudier B, McDermott DF, et al. Nivolumab versus everolimus in advanced renal-cell carcinoma. *N Engl J Med* 2015;373:1803-13.
41. Tomaszewski JJ, Uzzo RG, Smaldone MC. Heterogeneity and renal mass biopsy: A review of its role and reliability. *Cancer Biol Med* 2014;11:162-72.
42. Sankin A, Hakimi AA, Mikkilineni N, et al. The impact of genetic heterogeneity on biomarker development in kidney cancer assessed by multiregional sampling. *Cancer Med* 2014;3:1485-92.
43. Gerlinger M, Horswell S, Larkin J, et al. Genomic architecture and evolution of clear cell renal cell carcinomas defined by multiregion sequencing. *Nat Genet* 2014;46:225-33.
44. Kwiatkowski DJ, Choueiri TK, Fay AP, et al. Mutations in TSC1, TSC2, and MTOR are associated with response to rapalogs in patients with metastatic renal cell carcinoma. *Clin Cancer Res* 2016;22:2445-52.
45. Sonpavde G, Choueiri TK. Precision medicine for metastatic renal cell carcinoma. *Urol Oncol* 2014;32:5-15.
46. Voss MH, Chen D, Marker M, et al. Circulating biomarkers and outcomes from a randomised phase II trial of sunitinib vs everolimus for patients with metastatic renal cell carcinoma. *Br J Cancer* 2016;114:642-9.
47. Patel SP, Kurzrock R. PD-L1 expression as a predictive biomarker in cancer immunotherapy. *Molec Cancer Therapy* 2015;14:847-56.

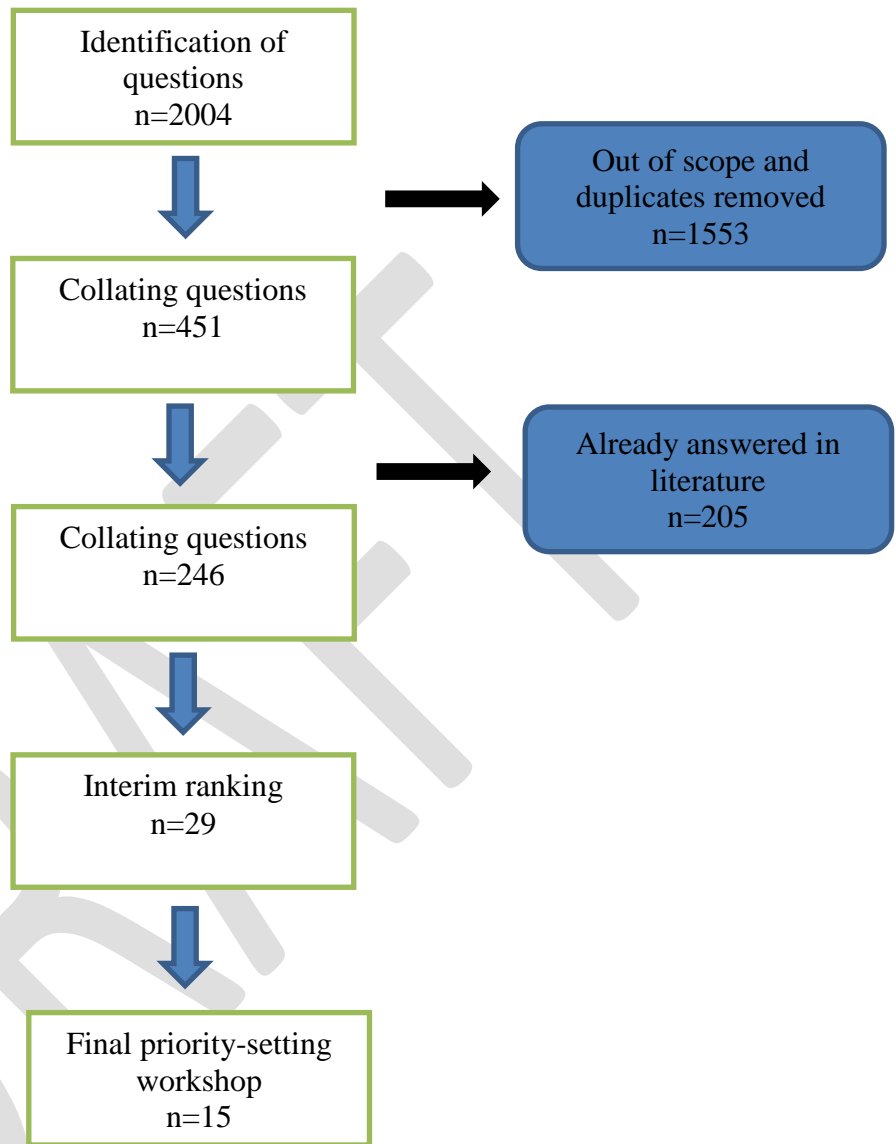
48. Leppert JT, Hanley J, Wagner TH, et al. Utilization of renal mass biopsy in patients with renal cell carcinoma. *J Urol* 2014; 83:774-80.
49. Richard PO, Jewett MA, Bhatt JR, et al. Renal tumor biopsy for small renal masses: A single-center 13-year experience. *Eur Urol* 2015;68:1007-13.
50. Marconi L, Dabestani S, Lam TB, et al. Systematic review and meta-analysis of diagnostic accuracy of percutaneous renal tumour biopsy. *Eur Urol* 2016;69:660-73.
51. Patel HD, Johnson MH, Pierorazio PM, et al. Diagnostic accuracy and risks of biopsy in the diagnosis of a renal mass suspicious for localized renal cell carcinoma: Systematic review of the literature. *J Urol* 2016;195:1340-7.
52. Kutikov A, Smaldone MC, Uzzo RG, et al. Renal mass biopsy: Always, sometimes, or never? *Eur Urol* 2016;70:403-6.
53. Blute ML, Drewry A, Abel EJ. Percutaneous biopsy for risk stratification of renal masses. *Ther Adv Urol* 2015;7:265-74.
54. Halverson SJ, Kunju LP, Bhalla R, et al. Accuracy of determining small renal mass management with risk stratified biopsies: Confirmation by final pathology. *J Urol* 2013;189:441-6.
55. Rogers CG, Ditlev JA, Tan M, et al. Microarray gene expression profiling using core biopsies of renal neoplasia. *Am J Transl Res* 2009;1:55-61.
56. Lane BR, Li J, Zhou M, et al. Differential expression in clear cell renal cell carcinoma identified by gene expression profiling. *J Urol* 2009;181:849-60.
57. Anastasiadis AG, Davis AR, Sawczuk IS, et al. Quality of life aspects in kidney cancer patients: Data from a national registry. *Support Care Cancer* 2003;11:700-6.
58. Moretto P, Jewett MAS, Basiuk J, et al. Kidney cancer survivorship survey of urologists and survivors: The gap in perceptions of care, but agreement on need. *Can Urol Assoc J* (accepted for publication). 2014;8:190-4.
59. Howell D, Mayo S, Currie S, et al. Psychosocial health care needs assessment of adult cancer patients: A consensus-based guideline. *Support Care Cancer* 2012;20:3343-54.
60. CJSE Panel, Howell D, Hack TF, et al. Survivorship services for adult cancer populations: A pan-Canadian guideline. *Curr Oncol* 2011;18:e265-e81.
61. Dong ST, Butow PN, Tong A, et al. Patients' experiences and perspectives of multiple concurrent symptoms in advanced cancer: A semi-structured interview study. *Support Care Cancer* 2016;24:1373-86.
62. Kidney Cancer Canada. Available from: <http://www.kidneycancercanada.ca/>.
63. KCRNo Canda Patient and Caregiver Forum: Live it! Survive it! Cure it! From living with kidney cancer to a cure. 2016. Available from: <http://www.kidneycancercanada.ca/news-plus-events/watch-past-meetings/2016-patient-caregiver-forum/>.



64. Makoul G, Clayman ML. An integrative model of shared decision making in medical encounters. *Patient Educ Couns* 2006;60:301-12.
65. Stacey D, Légaré F, Col NF, et al. Decision aids for people facing health treatment or screening decisions (Review). 10.1002/14651858.CD001431.pub4 ed. Reviews TCCCDoS, editor: John Wiley & Sons, Ltd.; 2014.
66. Patient Decision Aids Research Group OHRI. A to Z inventory of decision aids. 2016. Available from: <https://decisionaid.ohri.ca/azlist.html>.
67. Elwyn G, Scholl I, Tietbohl C, et al. "Many miles to go ...": a systematic review of the implementation of patient decision support interventions into routine clinical practice. *BMC Med Inform Decis Mak* 2013;13(Suppl 2:S14).
68. Légaré F, Stacey D, Turcotte S, et al. Interventions for improving the adoption of shared decision making by healthcare professionals. *Cochrane Database Syst Rev* 2014;15:CD006732.
69. Stacey D, Samant R, Bennett C. Decision making in oncology: A review of patient decision aids to support patient participation. *CA: Cancer J Clin* 2008;58:293-304.
70. Kim SP, Shah ND, Weight CJ, et al. Contemporary trends in nephrectomy for renal cell carcinoma in the United States: Results from a population based cohort. *Int braz j urol* 2011;37:663-.
71. Odisho AY, Cooperberg MR, Fradet V, et al. Urologist density and county-level urologic cancer mortality. *J Clin Oncol* 2010;28:2499-504.
72. Ahmed S, Shahid RK. Disparity in cancer care: A canadian perspective. *Curr Oncol* 2012;19:e376-82.
73. Kidney Cancer Canada. Accessing Treatment for Kidney Cancer. 2016. Available from: <http://www.kidneycancercanada.ca/for-patients-and-caregivers/treatment-access-information/treatment-access-information-by-provinceterritory/access-to-medications-by-province-territory/>.
74. Sanfilippo KM, McTigue KM, Fidler CJ, et al. Hypertension and obesity and the risk of kidney cancer in 2 large cohorts of US men and women. *Hypertension* 2014;63:934-41.
75. Reaume MN, Graham GE, Tomiak E, et al. Canadian guideline on genetic screening for hereditary renal cell cancers. *Can Urol Assoc J* 2013;7:319-23.
76. Ho TH, Jonasch E. Genetic kidney cancer syndromes. *J Natl Compr Canc Netw* 2014;12:1347-55.
77. Purdue MP, Ye Y, Wang Z, et al. A genome-wide association study of renal cell carcinoma among African Americans. *Cancer Epidemiol Biomarkers Prev* 2014;23:209-14.
78. Gudmundsson J, Sulem P, Gudbjartsson DF, et al. A common variant at 8q24.21 is associated with renal cell cancer. *Nat Commun* 2013;4.

## Figures and Tables

**Fig. 1.**



**Table 1. Study-developed taxonomy**

Prevention and prediction	Impact of disease
Diagnosis	Survivorship
Treatment for localized and locally advanced disease	Health economics of kidney cancer
Treatment for advanced/metastatic disease	Community of practice/expertise
Prognosis and followup	Miscellaneous (including use of complementary and alternative treatments)

**Table 2. Examples of unanswered management questions**

Development and evaluation of new effective treatment for patients with advanced kidney cancer of the non-clear cell varieties / sub-types.	<ul style="list-style-type: none"> <li>•Are there non-surgical/chemotherapeutic options for patients with advanced non-clear renal cell carcinoma?</li> <li>•Can non clear cell directed systemic therapy be developed?</li> </ul>
Identification and validation of biomarkers that may be used to predict the response to a treatment for kidney cancer.	<ul style="list-style-type: none"> <li>•Will there be predictors of who would benefit most from one drug vs another?</li> <li>•How to best individualize medicine in kidney cancer treatment?</li> </ul>
Identification and validation of biomarkers that may be used for the detection of kidney cancer.	<ul style="list-style-type: none"> <li>•How can we improve the screening and detection for kidney cancer so it's caught earlier?</li> <li>•Is there any development in determining markers in the blood or urine to detect kidney cancer?</li> </ul>
Development and evaluation of new immunotherapies for the treatment of kidney cancer including immune biomarkers of patient and tumour characteristics and response.	<ul style="list-style-type: none"> <li>•Could immunotherapies be particularly effective with kidney cancer patients?</li> <li>•Can targeted agents be utilized in combination with immunotherapy?</li> </ul>
Identification and validation of novel indicators or biomarkers that can be used to predict the development and progression of metastatic kidney cancer.	<ul style="list-style-type: none"> <li>•What indicators help to predict how the disease will develop?</li> <li>•Does the impact of the molecular subtyping of clear cell kidney cancer have tremendous influence in determining the aggressiveness of the cancer, and how can that knowledge supplement the pathology of the tumors?</li> </ul>
Assessment of supportive care needs and appropriate supportive care interventions for patients with kidney cancer and their families.	<ul style="list-style-type: none"> <li>•How can patients be better supported with their psychosocial needs in early stage kidney cancer, especially when they are not seen in an academic setting?</li> <li>•How do patients cope when their prognosis is unknown?</li> </ul>
Development of decision making tools for patients and healthcare providers to help guide treatment decisions in all stages of kidney cancer	<ul style="list-style-type: none"> <li>•Putting aside technical considerations, when is it better to do a partial versus a radical nephrectomy?</li> <li>•How to choose between medical vs. surgical therapy vs. combination vs. delayed surgery for poor responders?</li> </ul>
Defining the role and criteria for using biopsy in the management of kidney cancer.	<ul style="list-style-type: none"> <li>•Is it possible to obtain accurate pre-treatment pathology (i.e. biopsy)?</li> <li>•Can the criteria for performing a regular biopsy be expanded?</li> </ul>
Evaluation of the impact of differences in regional funding and access to treatment on patient outcomes for kidney cancer.	<ul style="list-style-type: none"> <li>•What are the outcomes province to province in relation to inability to afford drugs for cancer treatment?</li> <li>•How do we ensure access to best treatment options regardless of provincial status?</li> </ul>
Identification of risk factors and cause(s) of kidney cancer	<ul style="list-style-type: none"> <li>•How does diet affect the risk of getting kidney cancer?</li> <li>•What is the role that environmental factors play in increasing development of kidney cancer?</li> </ul>